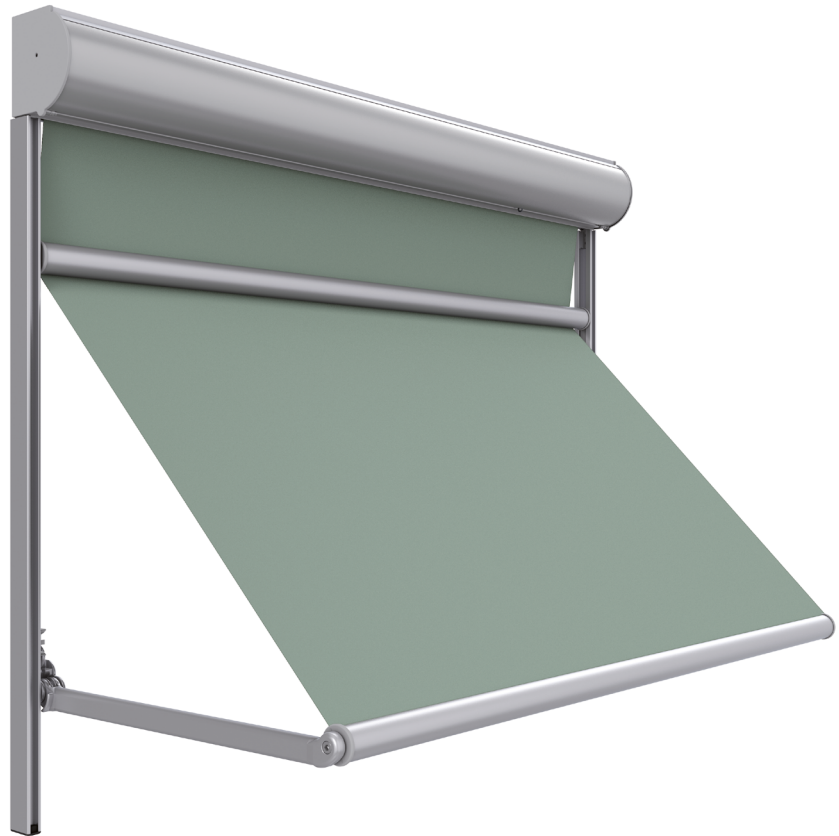


Ficha técnica

Hybris

Características técnicas

022021 Hybris



Accionamiento



Motorizado



Automatizado

Instalación



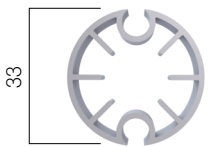
Ventana



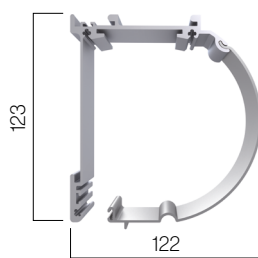
Balcón

Perfiles

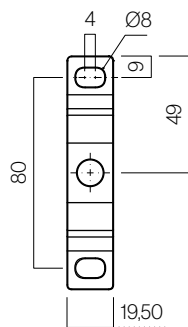
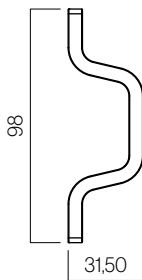
Terminal contrapeso



Cajón

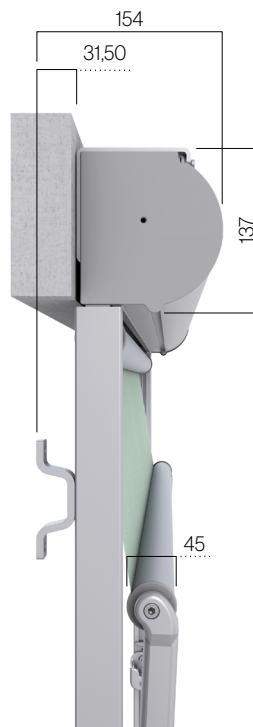


Soportes

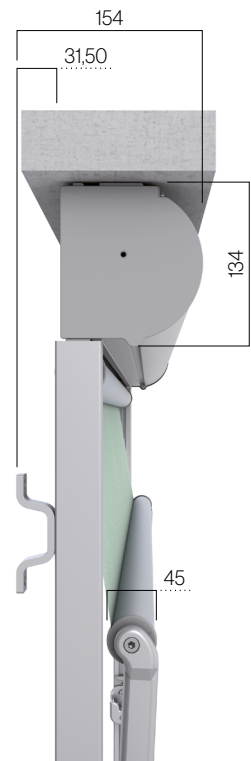


Tipo de instalación

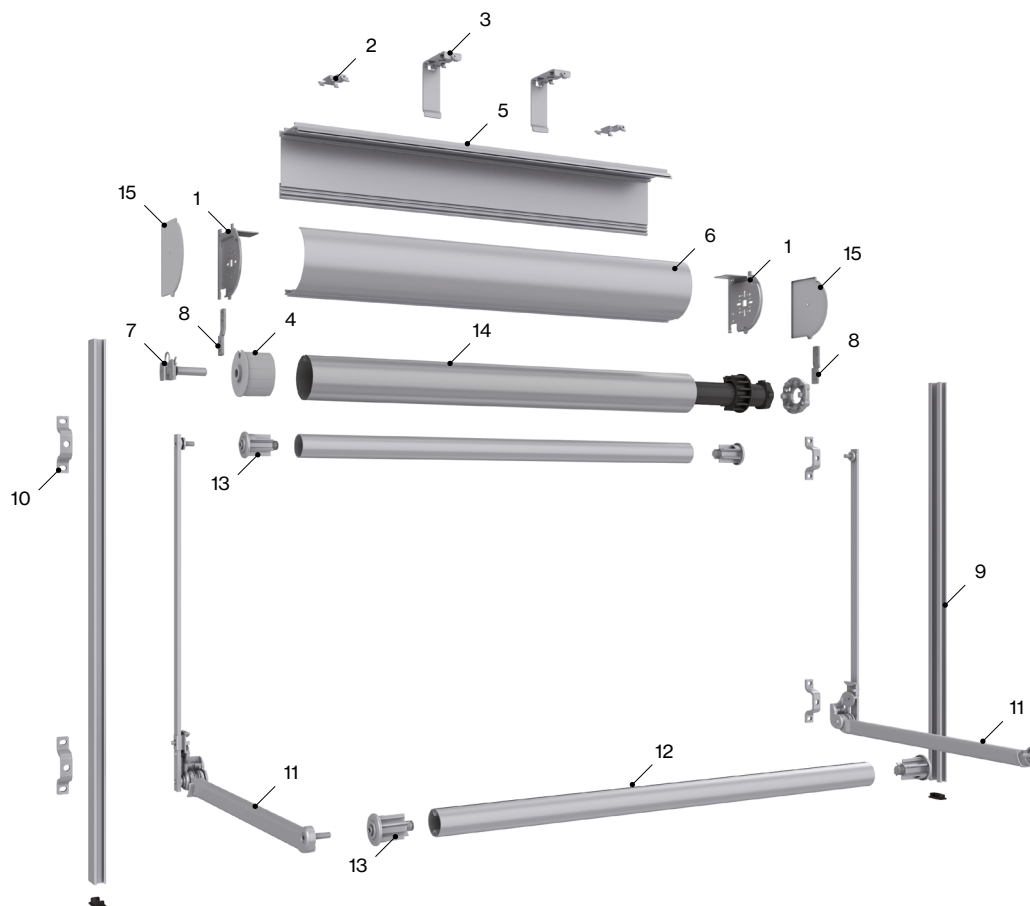
Frontal



Techo



Características técnicas



Componentes

Nº	Cód.	Descripción	Nº	Cód.	Descripción
1	030547	Jgo. testero metálico Saxun Box 110	9	030519	Guía aluminio 33x23
2	030540	Soporte techo Saxun Box 110	10	030096	Puente inox varilla 8 mm
3	030542	Soporte pared Saxun Box 110	11	030703	Jgo. de brazos sistema 110
4	030538	Cápsula motor/cardán - eje 78	12	030182	Terminal contrapeso sistema 110
5	004275	Cajón Saxun Box 110 mm perfil angular	13	030324	Tapón terminal contrapeso sistema 110 Brazos
6	004274	Cajón Saxun Box 110 mm perfil tapadera	14	022807	Tubo de enroll e ø80
7	030569	Perno soporte contera eje 78	15	030216	Jgo. tapas embellecedora testero Saxun Box 110
8	030212	Jgo. enlace Saxun Box 110 guía 33x23			

Resistencia al viento según EN 13561:2004+A1:2008

Alto	Línea											
	1,25	1,50	1,75	2,00	2,25	2,50	2,75	3,00	3,25	3,50	3,75	4,00
1,00	3	3	3	3	3	3	3	3	3	3	3	3
1,25	3	3	3	3	3	3	3	3	3	3	3	3
1,50	3	3	3	3	3	3	3	3	3	3	3	3
1,75	3	3	3	3	3	3	3	3	3	3	3	3
2,00	3	3	3	3	3	3	3	3	3	3	3	3
2,25	3	3	3	3	3	3	3	3	3	3	3	3
2,50	3	3	3	3	3	3	3	3	3	3	3	3
2,75	3	3	3	3	3	3	3	3	3	3	3	3
3,00	3	3	3	3	3	3	3	3	3	3	3	3

Clase 3 ≈ 48 Km/h

Tu mundo,
nuestro universo.

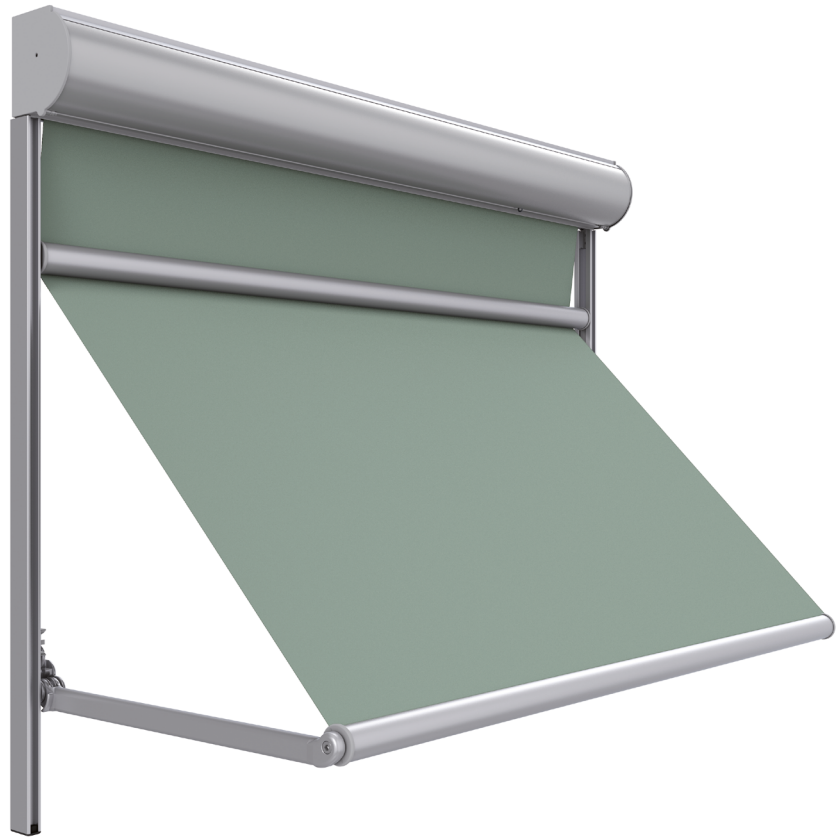
F.T. HYBRIS · ES · 010422

— Datasheet



Hybris

Technical characteristics

022021 Hybris



Mobilisation

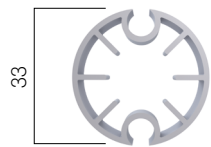
-  Motorized
-  Automated

Installation possibilities

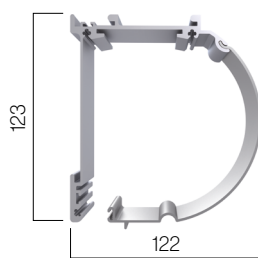
-  Window
-  Balcony

Profiles

Counterweight bottom

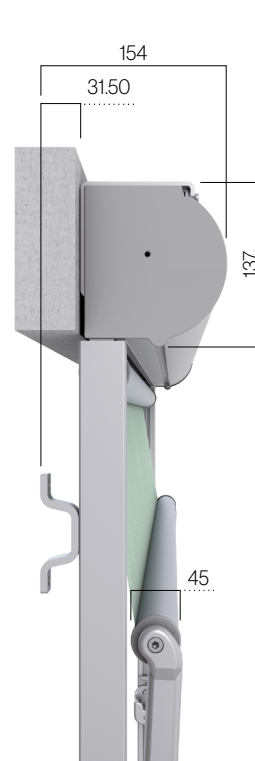


Box

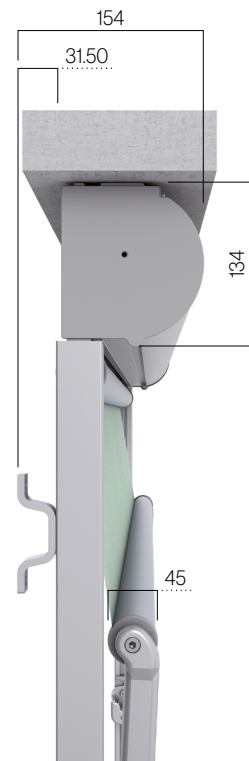


Types of fixing

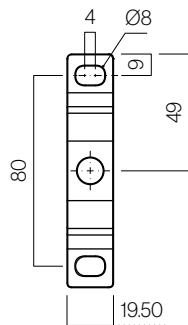
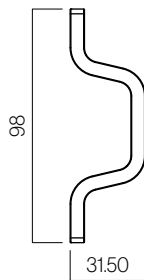
Frontal



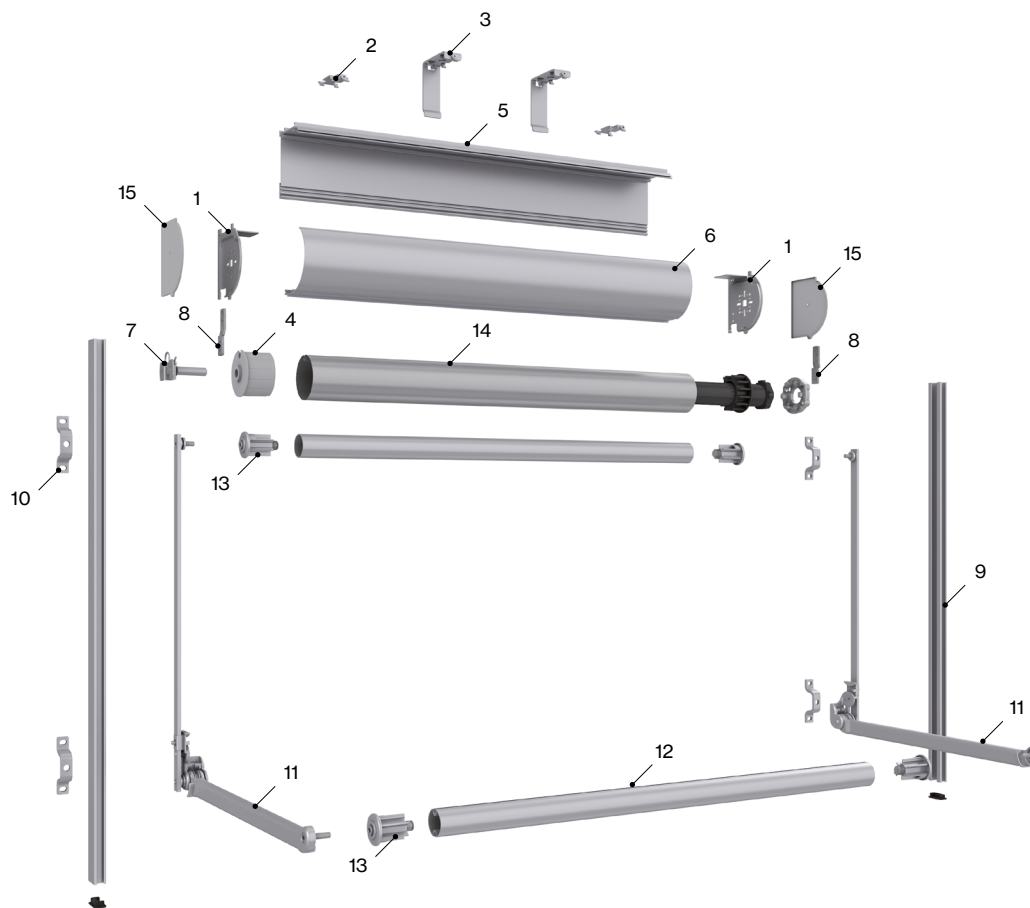
Ceiling



Supports



Technical characteristics



Components

Nº	Code	Description	Nº	Code	Description
1	030547	Set of end plates Saxun Box 110	9	030519	Guide aluminium 33x23
2	030540	Ceiling bracket Saxun Box 110	10	030096	Inox edge bracket 8 mm
3	030542	Wall bracket Saxun Box 110	11	030703	Set folding arms 110
4	030538	Roller cup motor/gear - axle 78	12	030182	Aluminium bottom profile 110
5	004275	Aluminium box front cover Saxun Box 110 mm	13	030324	Cap for counterweight bottom bar Saxun Box 110
6	004274	Aluminium box back cover Saxun Box 110 mm	14	022807	Axle ø80
7	030569	Roller cap bolt axle 78	15	030216	Set of end plates cover Saxun Box 110
8	030212	Set of guide joint 33x23 Saxun Box 110			

Wind resistance EN 13561:2004+A1:2008

Projection	Width											
	1.25	1.50	1.75	2.00	2.25	2.50	2.75	3.00	3.25	3.50	3.75	4.00
1.00	3	3	3	3	3	3	3	3	3	3	3	3
1.25	3	3	3	3	3	3	3	3	3	3	3	3
1.50	3	3	3	3	3	3	3	3	3	3	3	3
1.75	3	3	3	3	3	3	3	3	3	3	3	3
2.00	3	3	3	3	3	3	3	3	3	3	3	3
2.25	3	3	3	3	3	3	3	3	3	3	3	3
2.50	3	3	3	3	3	3	3	3	3	3	3	3
2.75	3	3	3	3	3	3	3	3	3	3	3	3
3.00	3	3	3	3	3	3	3	3	3	3	3	3

Class 3 ≈ 48 Km/h

Your world,
our universe.

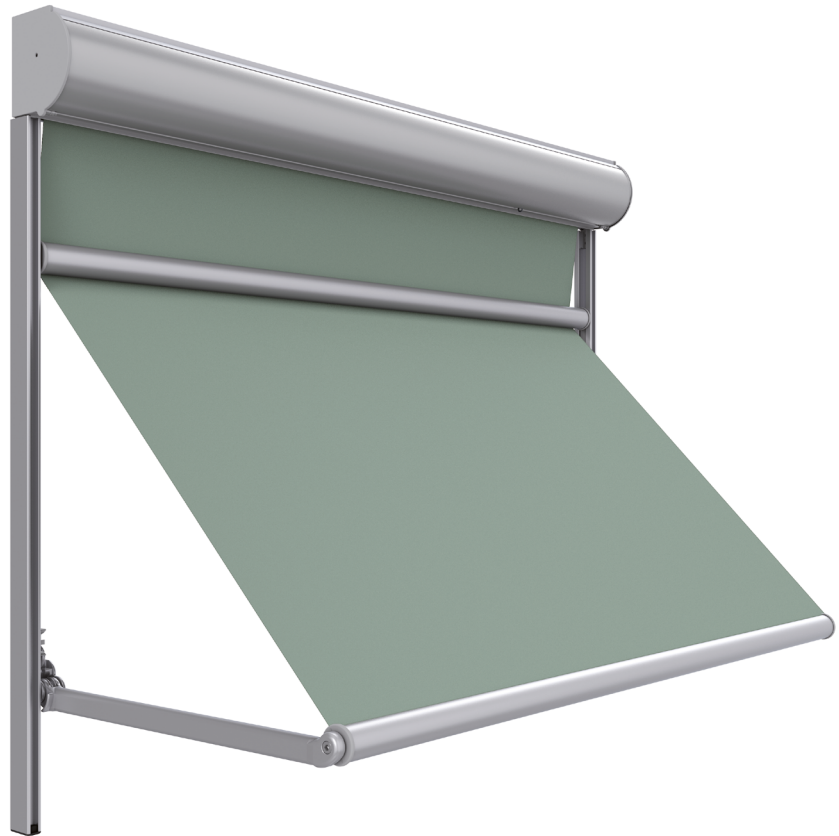
FT. HYBRIS · EN · 010422

— Fiche technique

Hybris

Caractéristiques techniques

022021 Hybris



Type de manoeuvre



Motorisé



Automatisé

Installation



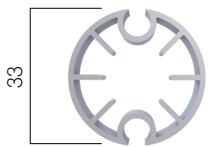
Fenêtre



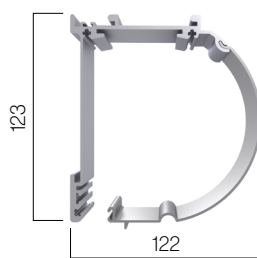
Balcon

Profils

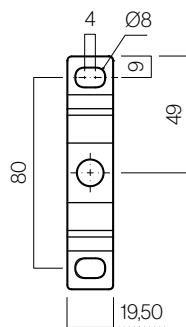
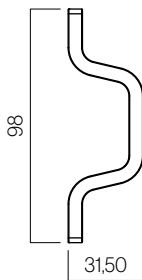
Lame finale contrepois



Caisson

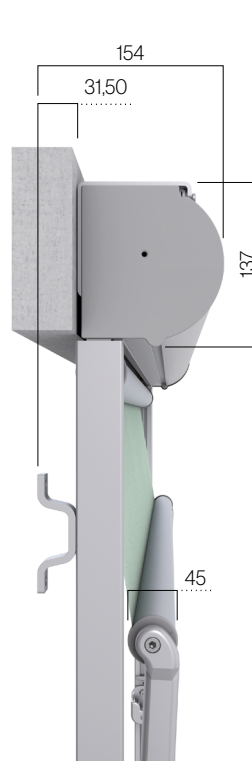


Supports

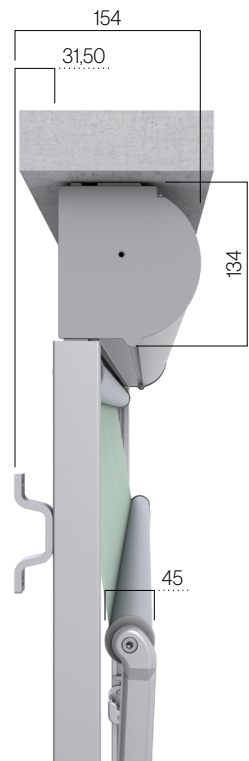


Types de fixation

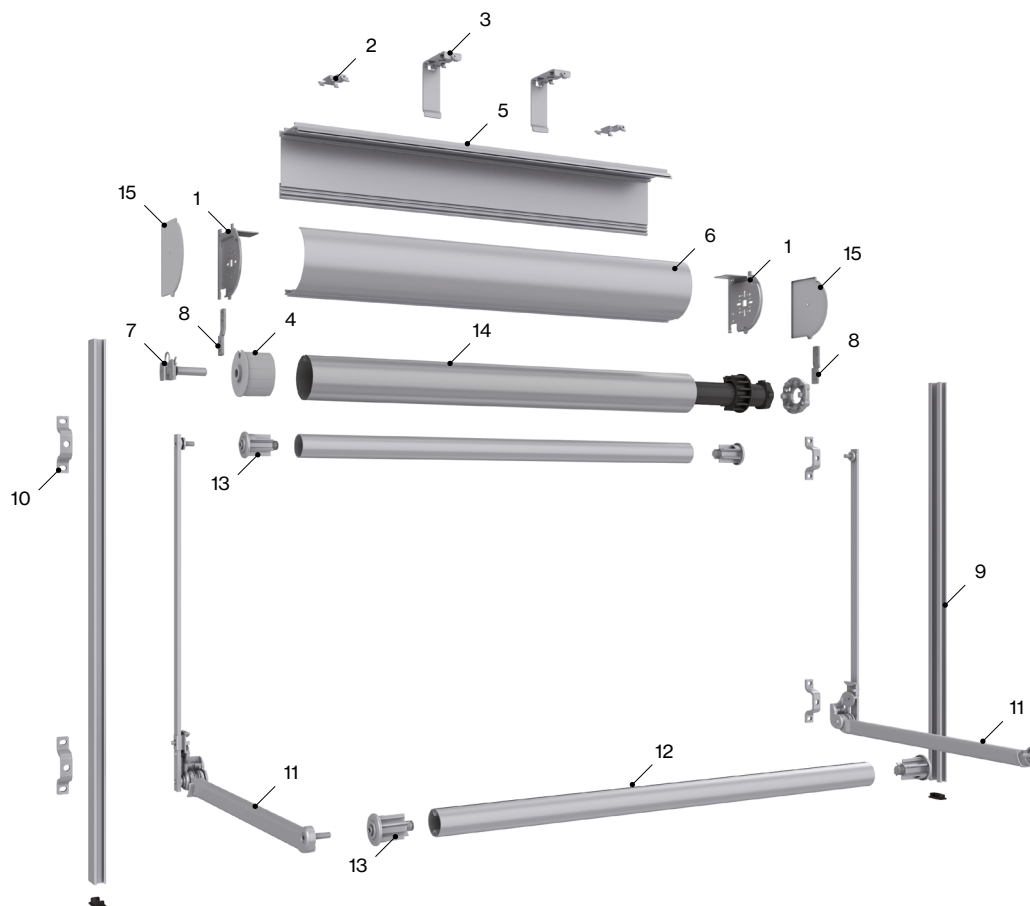
Frontal



Plafond



Caractéristiques techniques



Éléments

N°	Réf.	Description	N°	Réf.	Description
1	030547	Paire d'embouts métallique Saxun Box 110	9	030519	Coulisse de aluminium 33x23
2	030540	Support plafond Saxun Box 110	10	030096	Pont en inox tige de 8 mm
3	030542	Support mur Saxun Box 110	11	030703	Paire de bras système 110
4	030538	Embout moteur/treuil - axe 78	12	030182	Lame finale contreponds système 110
5	004275	Caisson Saxun Box 110 mm	13	030324	Embouts lame finale contreponds 110 Bras
6	004274	Trappe de visite Saxun Box 110 mm	14	022807	Tube d'enroulement ø80
7	030569	Coussinet pour embout axe 78	15	030216	Paire de caches enjoleur Saxun Box 110
8	030212	Paire union Saxun Box 110 coulisse 33x23			

Classement résistance au vent EN 13561:2004+a1:2008

Hauteur	Largeur											
	1,25	1,50	1,75	2,00	2,25	2,50	2,75	3,00	3,25	3,50	3,75	4,00
1,00	3	3	3	3	3	3	3	3	3	3	3	3
1,25	3	3	3	3	3	3	3	3	3	3	3	3
1,50	3	3	3	3	3	3	3	3	3	3	3	3
1,75	3	3	3	3	3	3	3	3	3	3	3	3
2,00	3	3	3	3	3	3	3	3	3	3	3	3
2,25	3	3	3	3	3	3	3	3	3	3	3	3
2,50	3	3	3	3	3	3	3	3	3	3	3	3
2,75	3	3	3	3	3	3	3	3	3	3	3	3
3,00	3	3	3	3	3	3	3	3	3	3	3	3

Classe 3 ≈ 48 Km/h

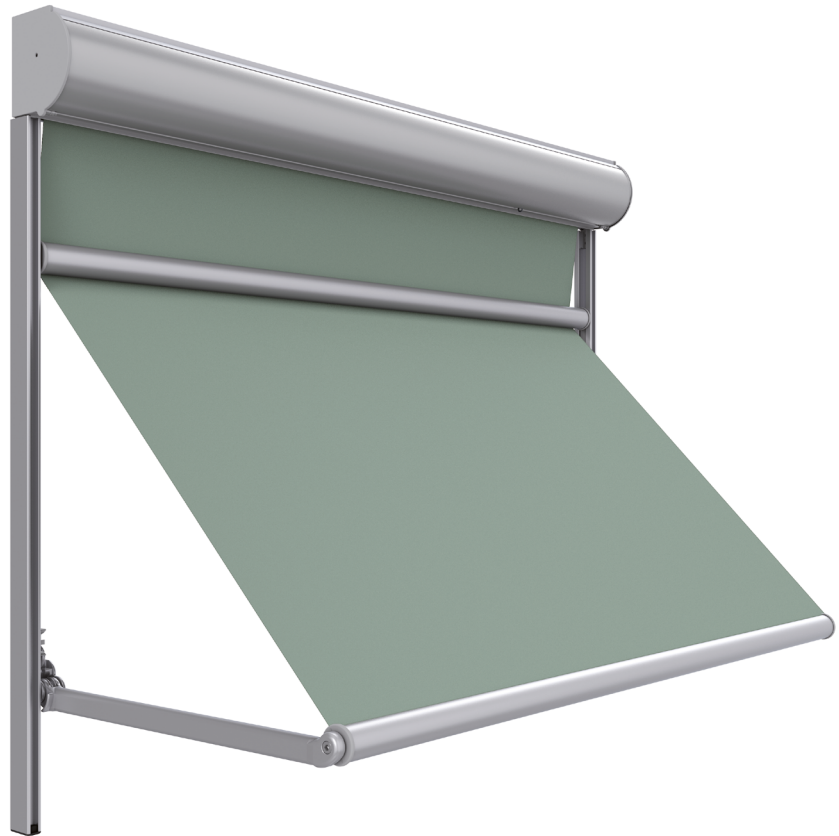
Votre monde,
notre univers.

— Scheda tecniche

Hybris

Caratteristiche tecniche

022021 Hybris



Azionamento

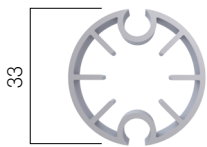


Installazione

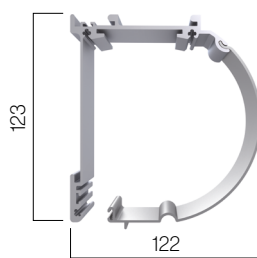


Profili

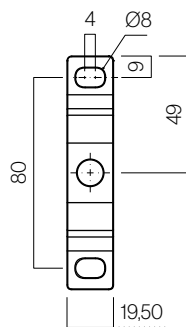
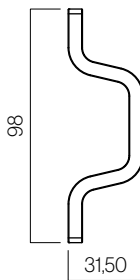
Terminale contrappeso



Cassonetto

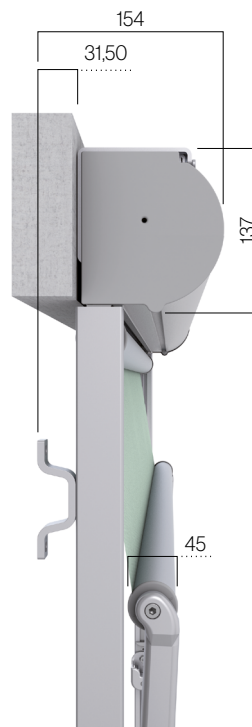


Supporti

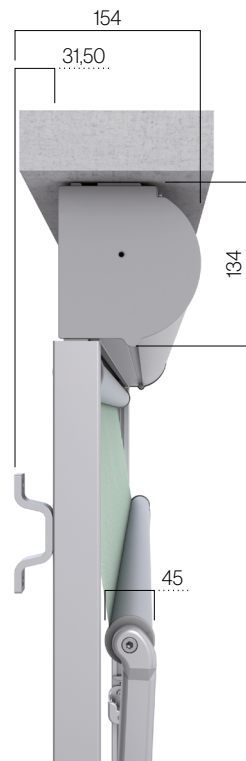


Tipi di fissaggio

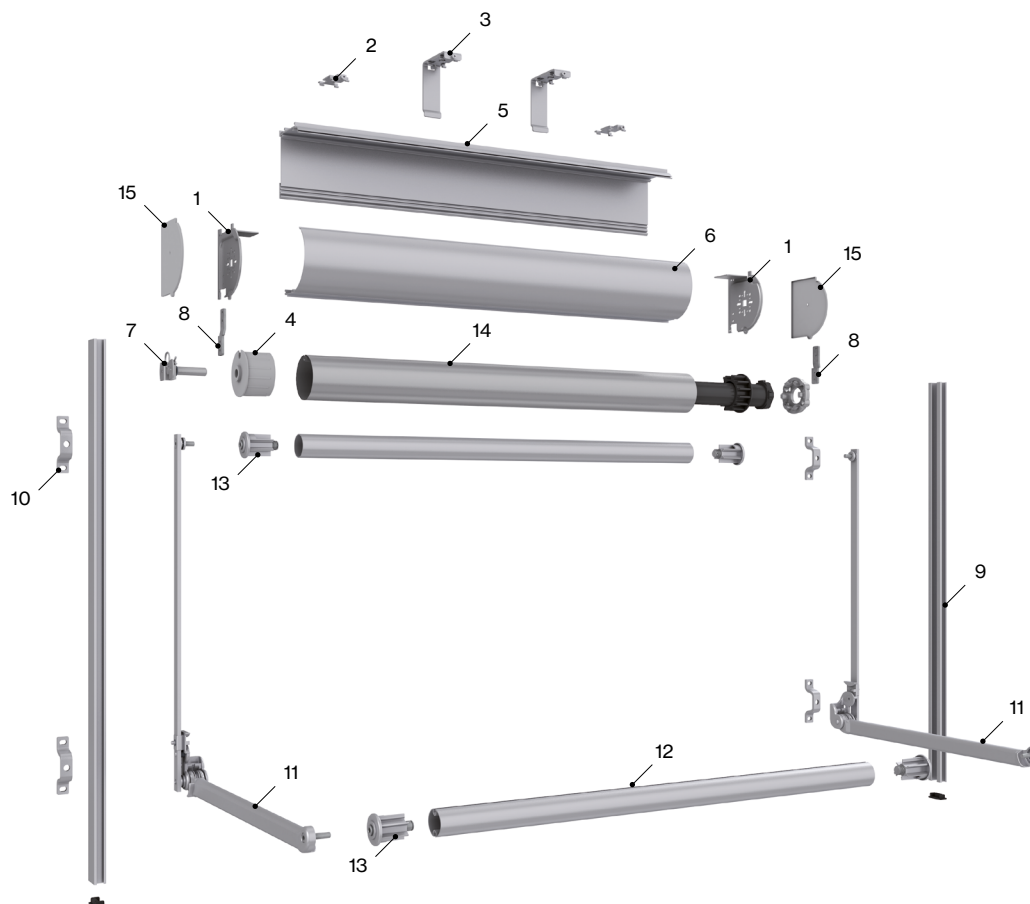
Frontale



Soffitto



Caratteristiche tecniche



Componenti

N°	Codice	Descrizione	N°	Codice	Descrizione
1	030547	Kit testata metallica Saxun Box 110	9	030519	Guida in alluminio 33x23
2	030540	Supporto soffitto Saxun Box 110	10	030096	Puente inox varilla 8 mm
3	030542	Supporto a parete Saxun Box 110	11	030703	Kit braccio sistema 110
4	030538	Capsula motore/argano - rullo 78	12	030182	Terminale contrappeso sistema 110
5	004275	Cassonetto Saxun Box 110 mm profilo angolare	13	030324	Tappi terminale contrappeso sistema 110 Braccio
6	004274	Cassonetto Saxun Box 110 mm profilo di copertura	14	022807	Rullo di avvolgimento ø80
7	030569	Perno supporto capsula rullo 78	15	030216	Kit estetico testata Saxun Box 110
8	030212	Jgo.enlace Saxun Box 110 guida 33x23			

Resistenza al vento EN 13561:2004+A1:2008

Sporgenza	Larghezza												
	1,25	1,50	1,75	2,00	2,25	2,50	2,75	3,00	3,25	3,50	3,75	4,00	
1,00	3	3	3	3	3	3	3	3	3	3	3	3	3
1,25	3	3	3	3	3	3	3	3	3	3	3	3	3
1,50	3	3	3	3	3	3	3	3	3	3	3	3	3
1,75	3	3	3	3	3	3	3	3	3	3	3	3	3
2,00	3	3	3	3	3	3	3	3	3	3	3	3	3
2,25	3	3	3	3	3	3	3	3	3	3	3	3	3
2,50	3	3	3	3	3	3	3	3	3	3	3	3	3
2,75	3	3	3	3	3	3	3	3	3	3	3	3	3
3,00	3	3	3	3	3	3	3	3	3	3	3	3	3

Classi 3 ≈ 48 Km/h

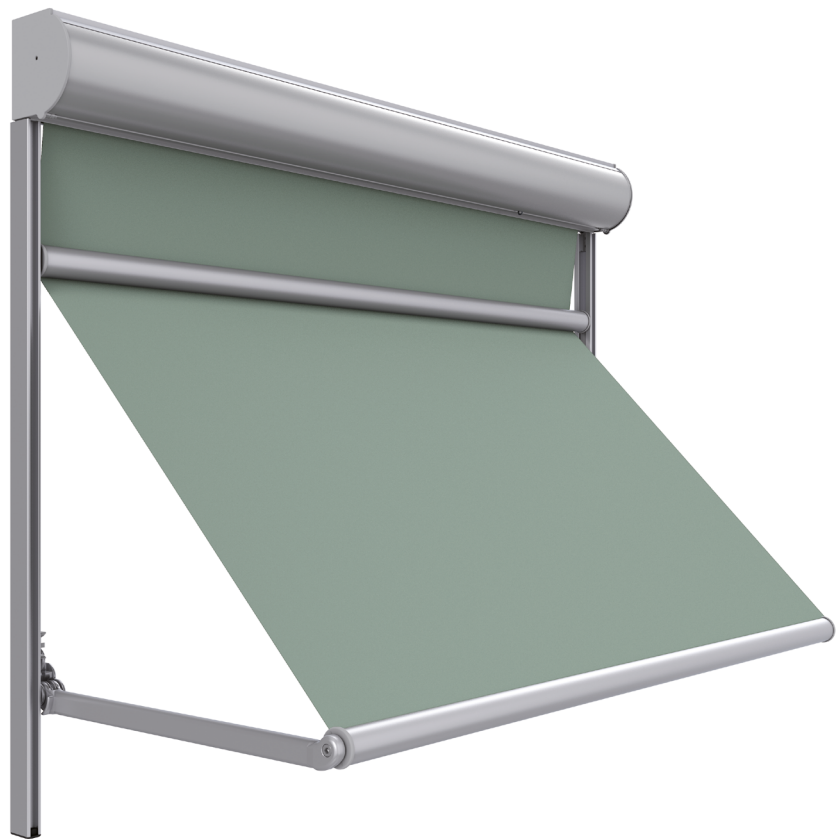
Il tuo mondo,
il nostro universo.

— Folha técnica

Hybris

Características técnicas

022021 Hybris



Accionamento



Motorizado



Automatizado

Instalação



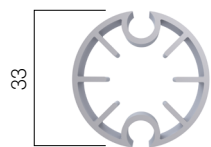
Janela



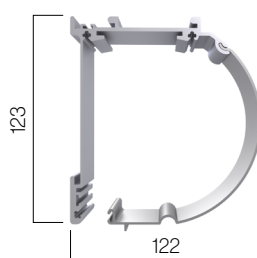
Varanda

Perfis

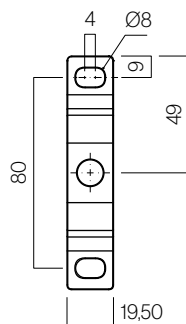
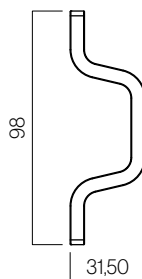
Terminal contrapeso



Gaveta

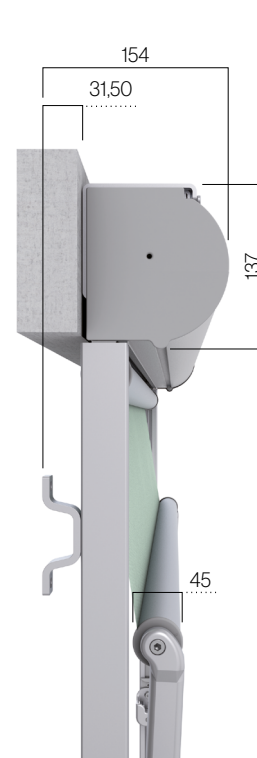


Suportes

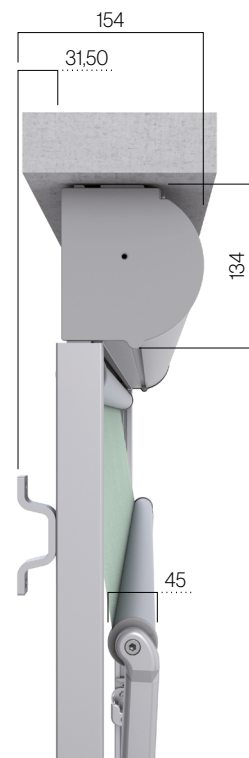


Tipos de fixação

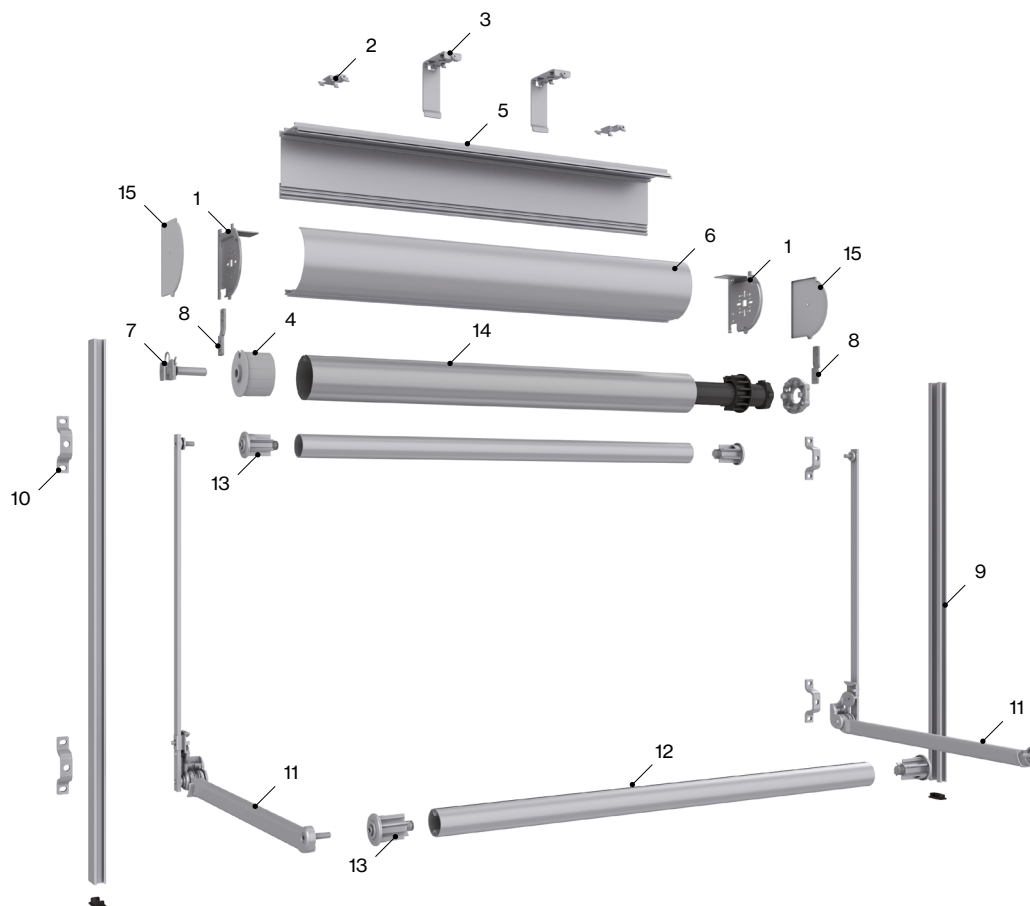
Frontal



Teto



Características técnicas



Componentes

Nº	Cód.	Descrição	Nº	Cód.	Descrição
1	030547	Conj. tampa metálica Saxun Box 110	9	030519	Guia alumínio 33x23
2	030540	Suporte teto Saxun Box 110	10	030096	Ponte de haste em aço inoxidável 8 mm
3	030542	Suporte parede Saxun Box 110	11	030703	Conj. de braços sistema 110
4	030538	Cápsula motor/cardan eixo 78	12	030182	Terminal contrapeso sistema 110
5	004275	Gaveta Saxun Box 110 mm perfil angular	13	030324	Tampão terminal contrapeso sistema 110 Braços
6	004274	Gaveta Saxun Box 110 mm perfil cobertura	14	022807	Tubo de enrolamento Ø80
7	030569	Pino suporte cápsula eixo 78	15	030216	Conj. tampas embelezadoras cobertura Saxun Box 110
8	030212	Conj. enlace Saxun Box 110 guia 33x23			

Classificação ao vento EN 13561:2004+A1:2008

Altura	Largura											
	1,25	1,50	1,75	2,00	2,25	2,50	2,75	3,00	3,25	3,50	3,75	4,00
1,00	3	3	3	3	3	3	3	3	3	3	3	3
1,25	3	3	3	3	3	3	3	3	3	3	3	3
1,50	3	3	3	3	3	3	3	3	3	3	3	3
1,75	3	3	3	3	3	3	3	3	3	3	3	3
2,00	3	3	3	3	3	3	3	3	3	3	3	3
2,25	3	3	3	3	3	3	3	3	3	3	3	3
2,50	3	3	3	3	3	3	3	3	3	3	3	3
2,75	3	3	3	3	3	3	3	3	3	3	3	3
3,00	3	3	3	3	3	3	3	3	3	3	3	3

Classe 3 ≈ 48 Km/h

O seu mundo,
o nosso universo.