

— Ficha técnica

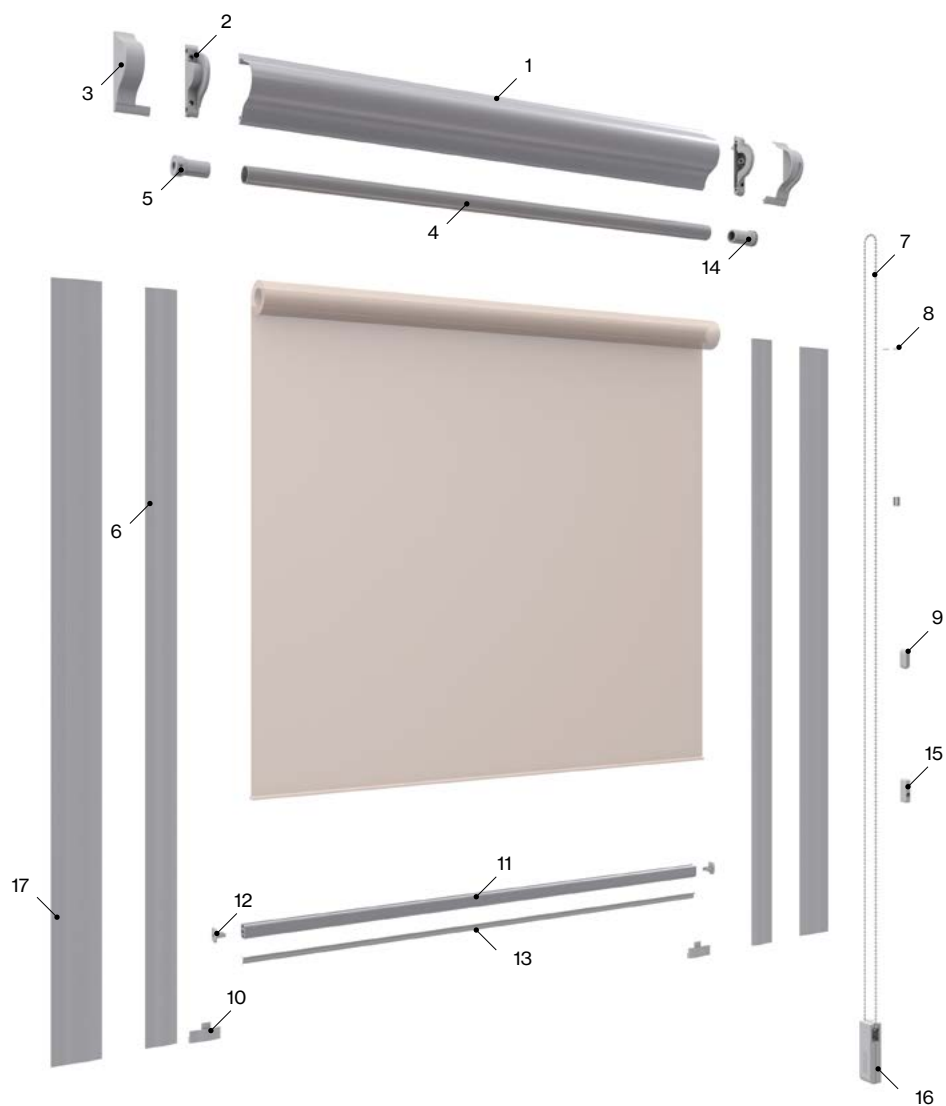
# Stor Glass



# Modelos

## Sistema Intra

030049 Stor Glass intra



### Componentes

Nº	Cód.	Descripción	Nº	Cód.	Descripción
1	030024	Cajón Stor Glass	10	030039	Tapón guía (sólo guía 33 mm)
2	030034	Juego testeros	11	030027	Terminal aluminio
3	030033	Embelecedor	12	030041	Tapón terminal
4	030028	Eje 18 mm	13	030031	Goma estanca
5	030038	Cápsula	14	030037	Mecanismo
6	030025	Guía aluminio 33 mm	15	030047	Sujeción cadena
7	030042	Cadena PVC 3,2x6	16	030775	Tensor Slim M
8	030044	Topes cadena	17	030946	Guía aluminio 50
9	030045	Unión cadena			

### Medidas de fabricación

Máximos

Ancho

**1,20 m**

Alto

**Según tejido**

Mínimos

Ancho

**0,40 m**

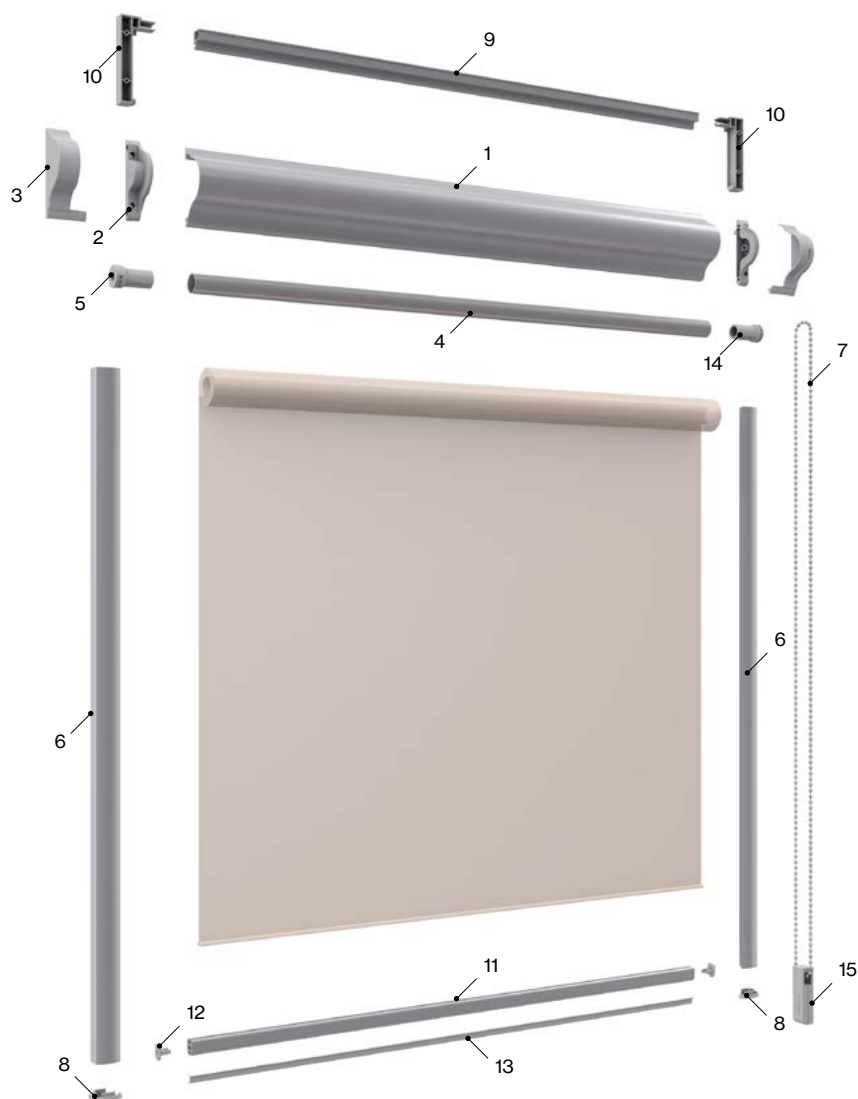
Alto

**0,30 m**

# Modelos

## Sistema Extra

031400 Stor Glass extra



### Componentes

Nº	Cód.	Descripción	Nº	Cód.	Descripción
1	030024	Cajón Stor Glass	9	031207	Perfil espaciador
2	030034	Juego testeros	10	031209	Juego esquina para espaciador
3	030033	Embellecedor	11	030027	Terminal aluminio
4	030028	Eje 18 mm	12	030041	Tapón terminal
5	030038	Cápsula	13	030031	Goma estanca
6	031208	Guía aluminio tipo C	14	030037	Mecanismo
7	030042	Cadena PVC 3,2x6	15	030775	Tensor Slim M
8	031210	Juego tapón guía tipo C			

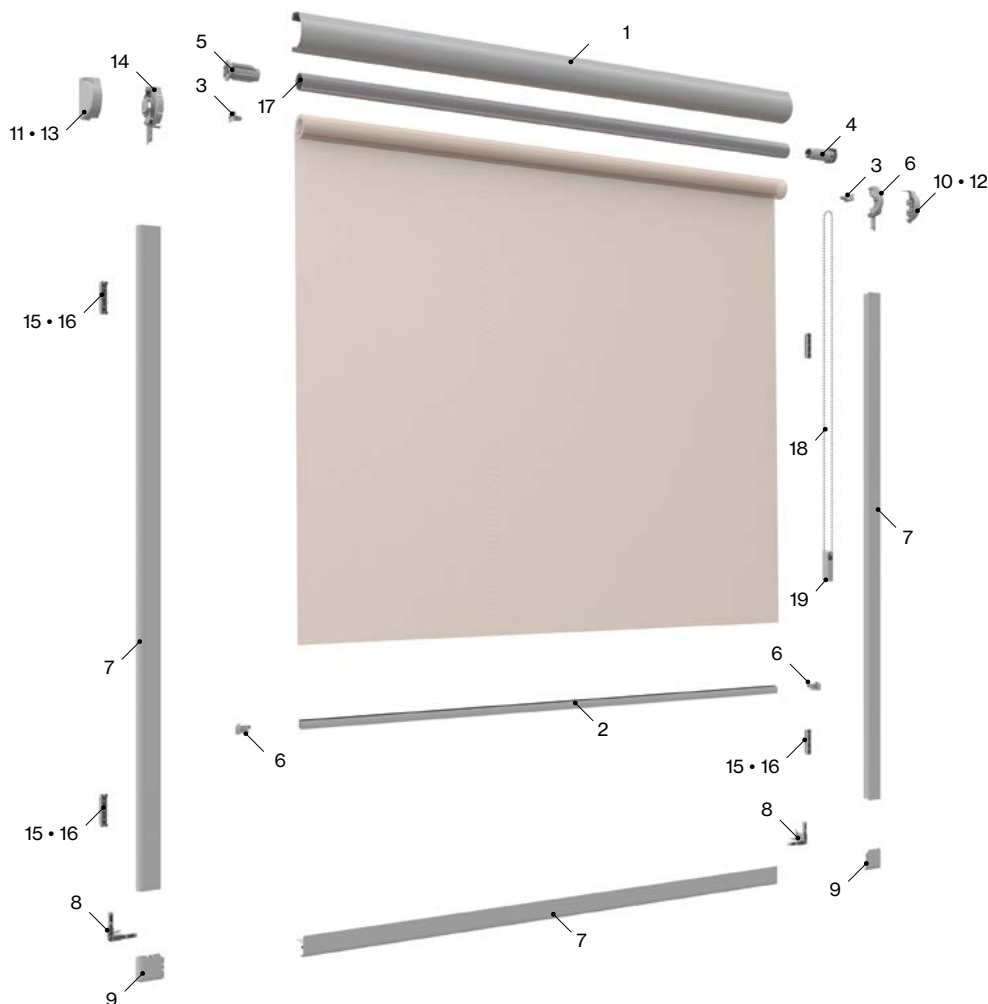
### Medidas de fabricación

Máximos		Mínimos	
Ancho	<b>1,20 m</b>	Ancho	<b>0,40 m</b>
Alto	<b>Según tejido</b>	Alto	<b>0,30 m</b>

# Modelos

## Sistema Avant

031500 Stor Glass Avant a cadena



### Componentes

Nº	Cód.	Descripción	Nº	Cód.	Descripción
1	031258	Cajon perfil 39 mm XS	11	031246	Cubierta cajon cadena derecha XS
2	031261	Contrapeso perfil XS	12	031247	Cubierta cajón muelle izquierda XS
3	031262	Pletina fijación XS	13	031248	Cubierta cajón muelle derecha XS
4	031263	Mecanismo enrollable XS cassette	14	031249	Testero cajón guía 39 mm XS
5	031266	Tope final 19 mm XS	15	031251	Clip sujeción ventana XS
6	031280	Tope contrapeso XS	16	031253	Cinta sujeción ventana XS
7	031241	Perfil fácil ajuste 580 cm XS	17	031256	Tubo enrollable alu. con cinta doble
8	031242	Unión esquina XS	18	030042	Cadena PVC 3,2x6
9	031243	Cubierta esquina white ABS XS	16	030775	Tensor Slim M
10	031245	Cubierta cajon cadena izqda. XS			

### Medidas de fabricación

Máximos

Ancho	<b>1,20 m</b>
Alto	<b>Según tejido</b>

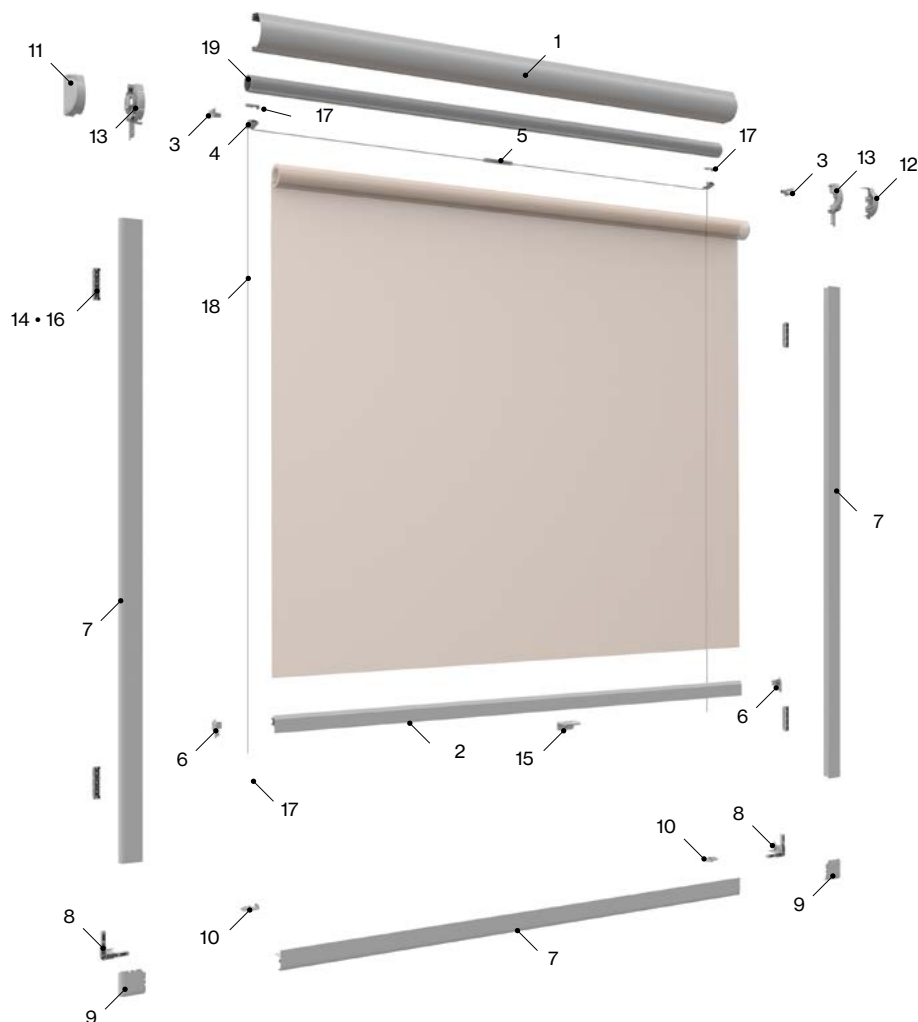
Mínimos

Ancho	<b>0,30 m</b>
Alto	<b>0,30 m</b>

# Modelos

## Sistema Avant

031500 Stor Glass Avant a muelle



### Componentes

Nº	Cód.	Descripción	Nº	Cód.	Descripción
1	031258	Cajon perfil 39 mm XS	11	031247	Cubierta cajon izquierda XS
2	031259	Contrapeso perfil tensionadoXS	12	031248	Cubierta cajon derecha XS
3	031262	Pletina fijación XS	13	031249	Cajon 39 mm marco interior XS
4	031277	Cable posicionador XS	14	031251	Clip sujeción ventana XS
5	031278	Limitador muelle XS	15	031252	Maneta para PLC20XS
6	031279	Tope contrapeso tensionado XS	16	031253	Cinta sujeción ventana XS
7	031241	Perfil facil ajuste 580 cm XS	17	031254	Tensor cordón sin pinza
8	031242	Unión esquina XS	18	029203	Cordón plisada 0,80
9	031243	Cubierta esquina white ABS XS	19	031256	Tubo enrollable alu. con cinta doble
10	031244	Tension shoe XS			

### Medidas de fabricación

Máximos

Ancho **1,20 m**  
 Alto **Según tejido**

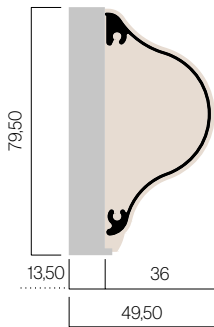
Mínimos

Ancho **0,30 m**  
 Alto **0,30 m**

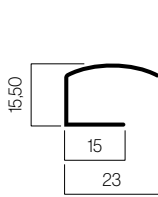
# Características técnicas

## Perfiles

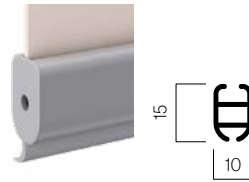
Cajetín Extra



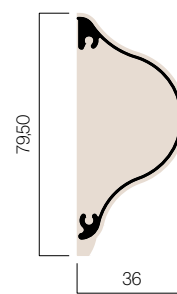
Guía Extra



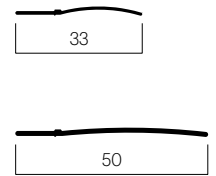
Terminal



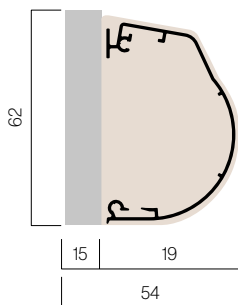
Cajetín Intra



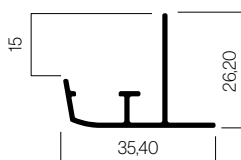
Guías Intra



Cajetín Avant



Guía Avant

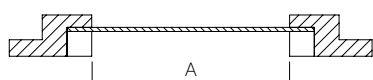


## Dimensiones del junquillo

### Junquillo • Sistema Intra

Tomar las medidas A y B según el tipo de junquillo. La diferencia entre ambas nunca podrá superar las medidas indicadas según el modelo de guía.

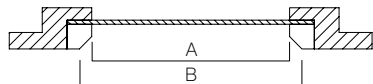
Recto 90°



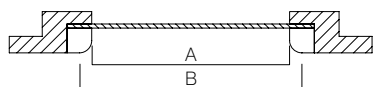
Guía 50  
B-A = 50 mm

Guía 33  
B-A = 25 mm

Inclinado



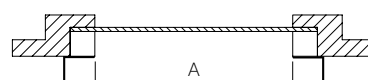
Redondo



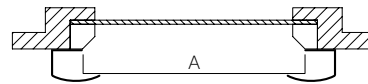
### Junquillo • Sistema Extra

Para la fabricación es imprescindible tomar siempre la medida A. Tener en cuenta que el Sistema Extra aumenta 28,50 mm en cada lado respecto la distancia A.

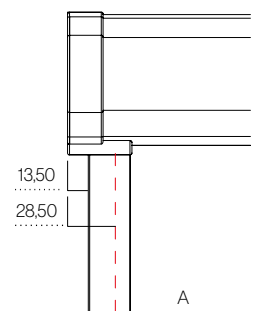
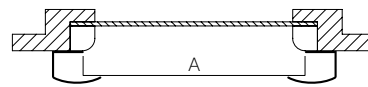
Recto 90°



Inclinado



Redondo

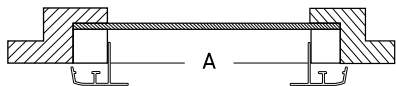


# Características técnicas

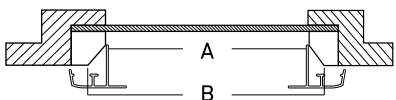
## Dimensiones del junquillo

### Junquillo • Sistema Avant

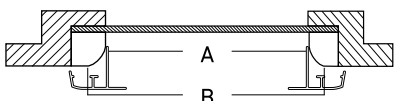
Recto 90°



Inclinado



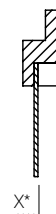
Redondo



### Profundidad del junquillo

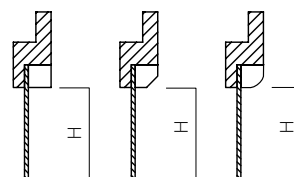
Solo se tiene en cuenta con el Sistema Avant.

\*Para sistemas Avant la profundidad será mayor o igual a 15 mm.



### Altura del junquillo

La altura se mide igual en ambos sistemas.



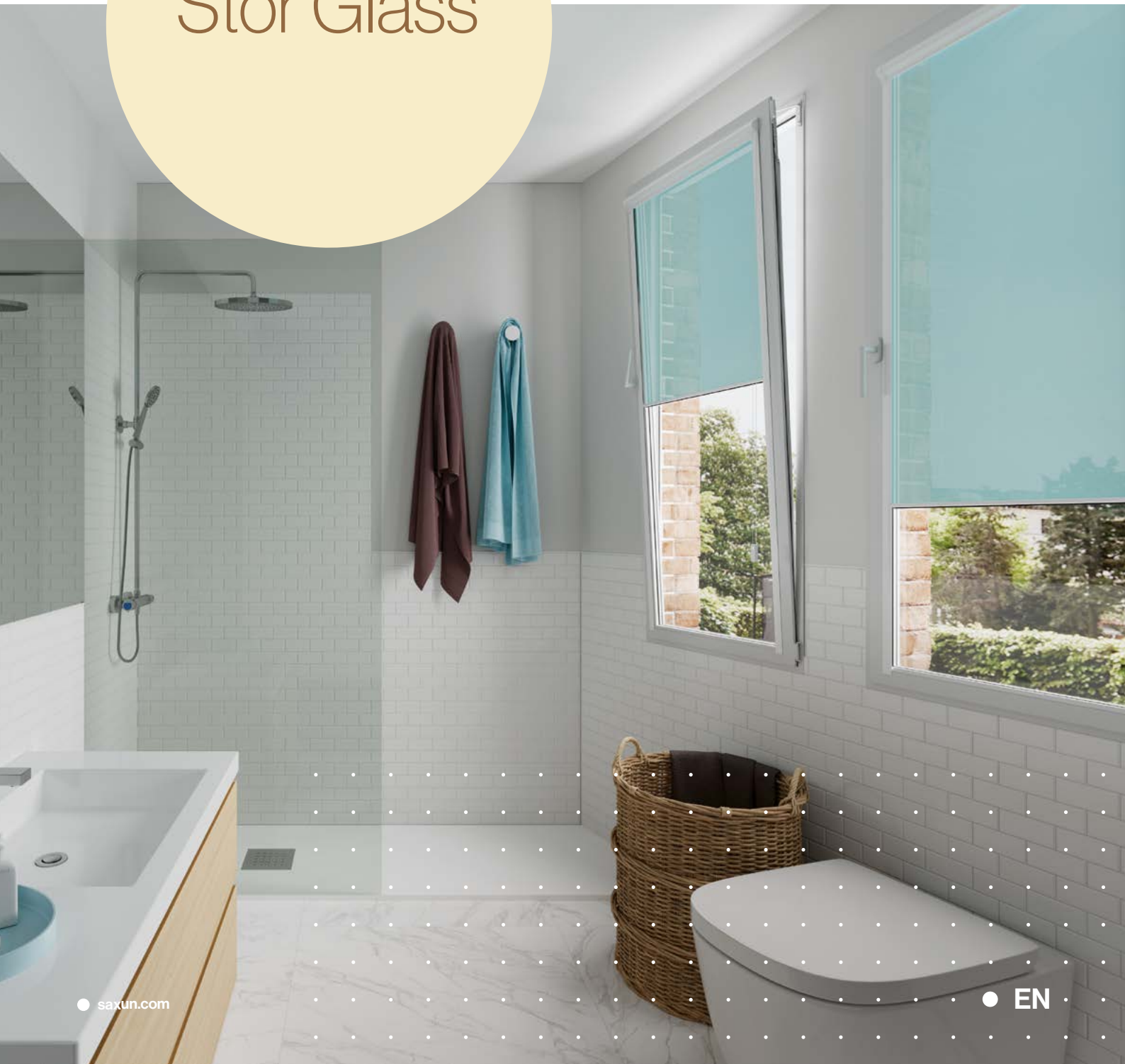
Tu mundo,  
nuestro universo.

FT. STOR GLASS · ES · 03 · 1122



— Datasheet

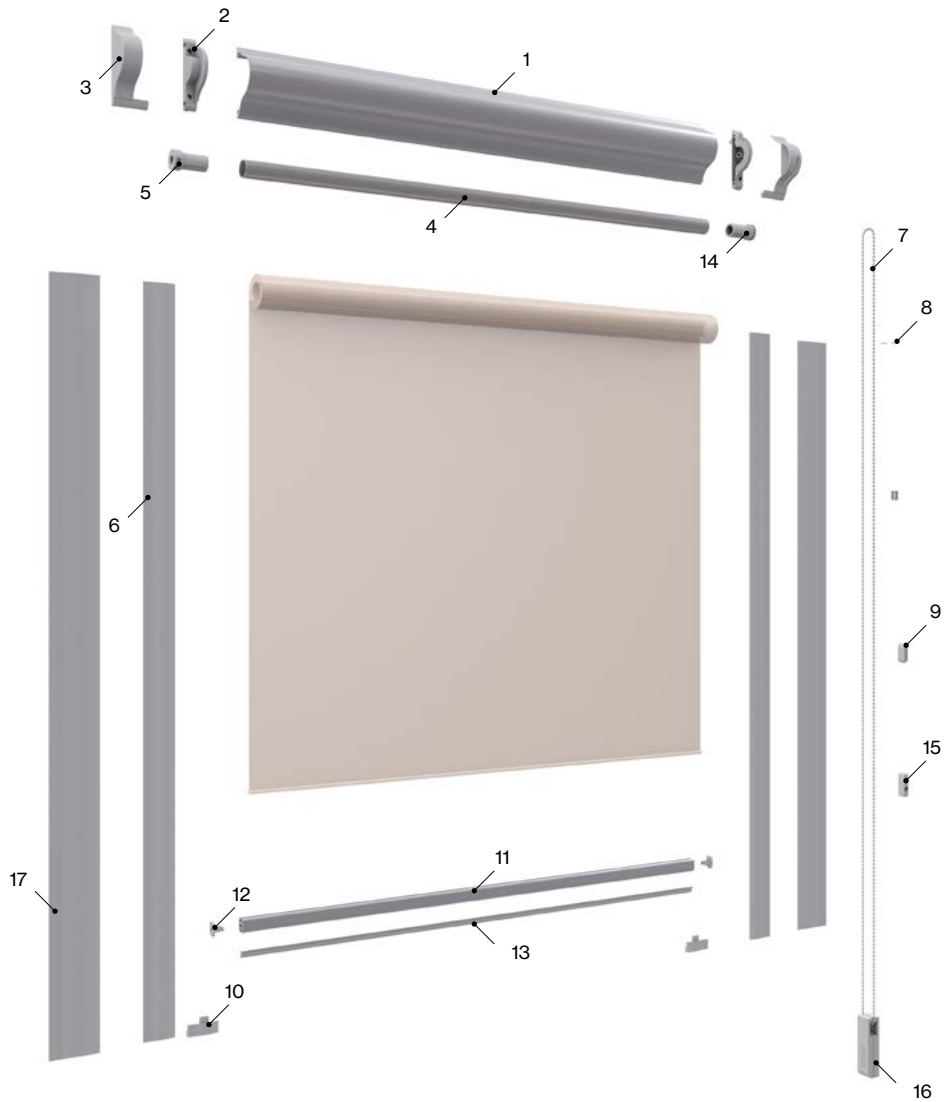
# Stor Glass



# Models

## Intra system

030049 Stor Glass intra



### Components

Nº	Code	Description	Nº	Code	Description
1	030024	Stor Glass Box	10	030039	Guide cap (33 mm guide only)
2	030034	Set of End caps	11	030027	Aluminium end slat
3	030033	Trim	12	030041	End cap
4	030028	Axle 18 mm	13	030031	Rubber seal
5	030038	Axle cup	14	030037	Mechanism
6	030025	Aluminium guide 33mm	15	030047	Chain clamp
7	030042	PVC Chain 3.2x6	16	030775	Slim M Tensor
8	030044	Chain stoppers	17	030946	Aluminium guide 50
9	030045	Chain Union			

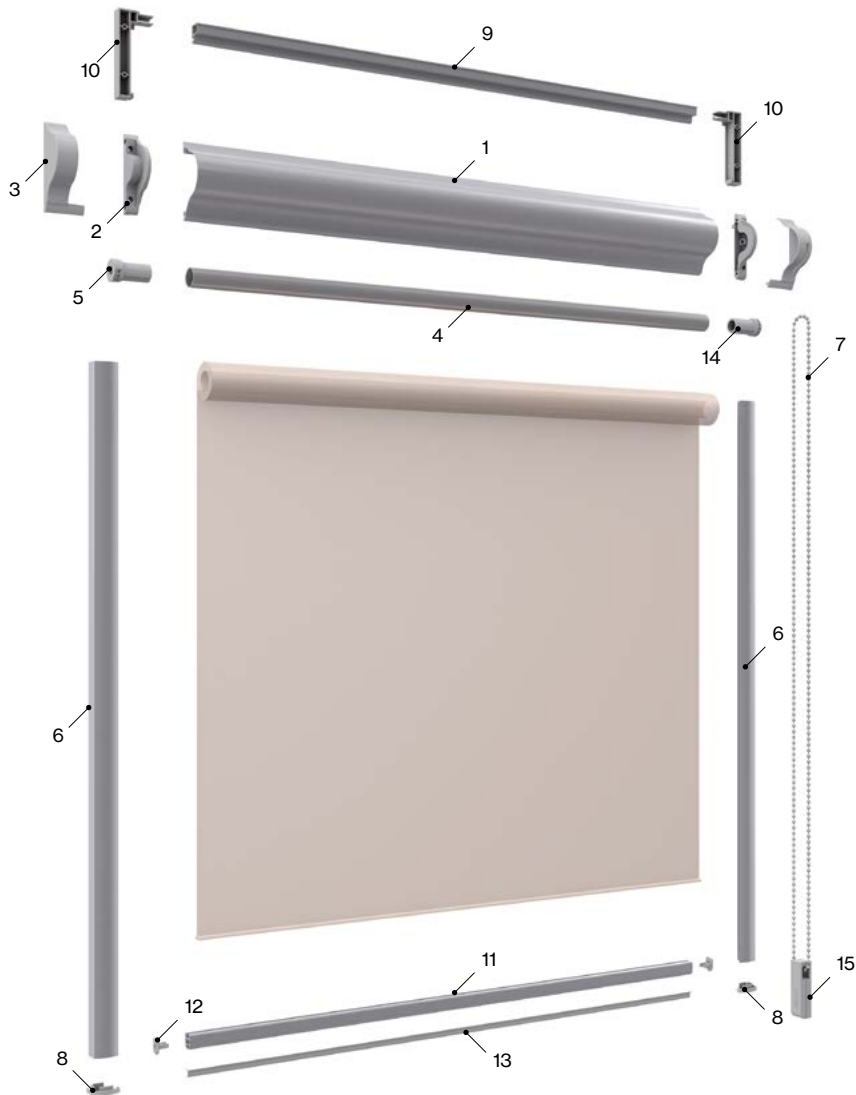
### Manufacturing measurements

Maximum		Minimum	
Width	<b>1.20 m</b>	Width	<b>0.40 m</b>
Height	<b>According to fabric</b>	Height	<b>0.30 m</b>

# Models

## Extra system

031400 Stor Glass extra



### Components

Nº	Code	Description	Nº	Code	Description
1	030024	Stor Glass Box	9	031207	Spacer profile
2	030034	Set of End caps	10	031209	Corner set for spacer
3	030033	Trim	11	030027	Aluminium end slat
4	030028	Axle 18 mm	12	030041	End cap
5	030038	Axle cup	13	030031	Rubber seal
6	031208	Aluminium guide type C	14	030037	Mechanism
7	030042	PVC 3.2x6 Chain	15	030775	Slim M Tensor
8	031210	Set of guide plug type C			

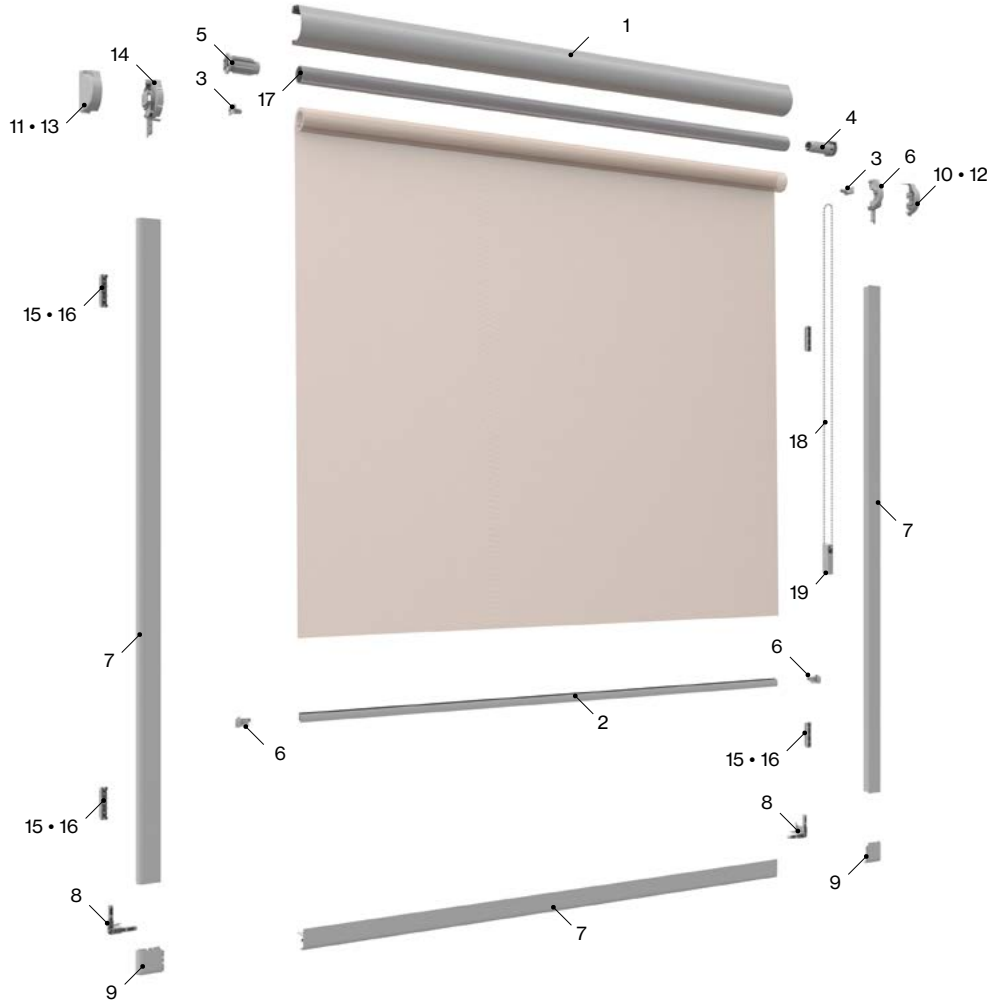
### Manufacturing measurements

Maximum		Minimum	
Width	<b>1.20 m</b>	Width	<b>0.40 m</b>
Height	<b>According to fabric</b>	Height	<b>0.30 m</b>

# Modelos

## Avant system

031500 Stor Glass Avant chain system



### Components

Nº	Code	Description	Nº	Code	Description
1	031258	Drawer profile 39 mm XS	11	031246	Drawer cover right chain XS
2	031261	Counterweight profile XS	12	031247	Left spring drawer cover XS
3	031262	Fixing plate XS	13	031248	Right spring drawer cover XS
4	031263	Rolling mechanism XS cassette	14	031249	Guide drawer head 39 mm XS
5	031266	End stop 19 mm XS	15	031251	Window fixing clip XS
6	031280	Counterweight cap XS	16	031253	XS window fastening tape
7	031241	Easy adjustment profile 580 cm XS	17	031256	Aluminium roll-up tube with double tape
8	031242	Union corner XS	18	030042	PVC chain 3.2x6
9	031243	Corner cover white ABS XSS	16	030775	Slim M tensioner
10	031245	Left chain cajon cover XS			

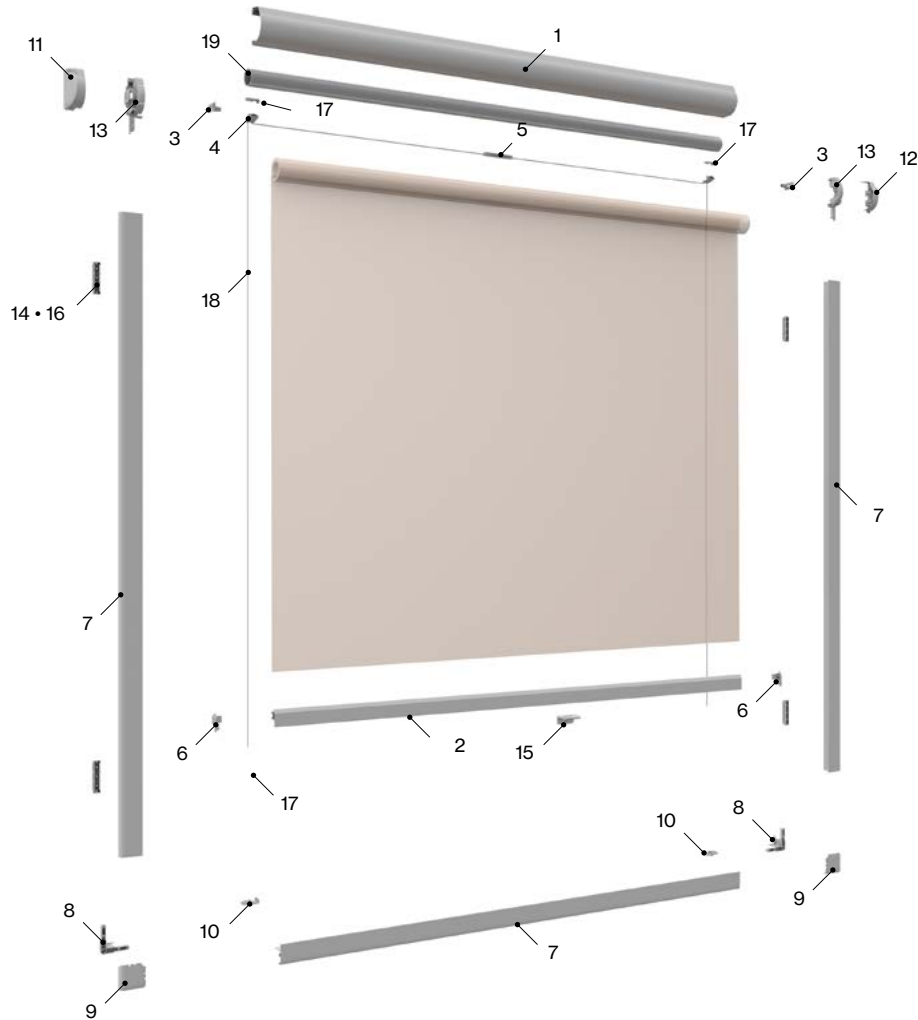
### Manufacturing measurements

Maximum		Minimum	
Width	<b>1.20 m</b>	Width	<b>0.40 m</b>
Height	<b>According to fabric</b>	Height	<b>0.30 m</b>

# Models

## Sistema Avant

031500 Stor Glass Avant a muelle



### Components

Nº	Code	Description	Nº	Code	Description
1	031258	Drawer profile 39 mm XS	11	031247	Left drawer cover XS
2	031259	Counterweight profile tensioned XS	12	031248	Right drawer cover XS
3	031262	Fixing plate XS	13	031249	Drawer 39 mm interior frame XS
4	031277	XS positioning cable	14	031251	Window fixing clip XS
5	031278	Spring limiter XS	15	031252	Handle for PLC20XS
6	031279	Counterweight buffer tensioned XS	16	031253	Window fastening tape XS
7	031241	Easy fit profile 580 cm XS	17	031254	Drawstring tensioner without clamp
8	031242	Union corner XS	18	029203	Pleated cord 0.80
9	031243	Corner cover white ABS XS	19	031256	Aluminium roll-up tube with double tape
10	031244	Tension shoe XS			

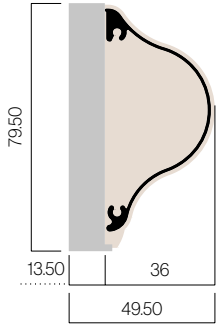
### Manufacturing measurements

Maximum		Minimum	
Width	<b>1.20 m</b>	Width	<b>0.40 m</b>
Height	<b>According to fabric</b>	Height	<b>0.30 m</b>

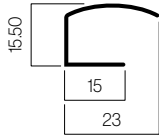
# Technical characteristics

## Profiles

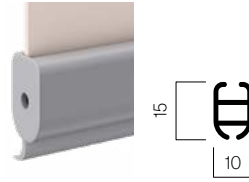
Extra box



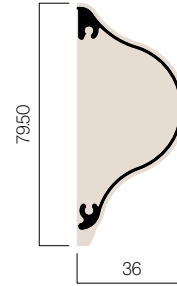
Extra Guides



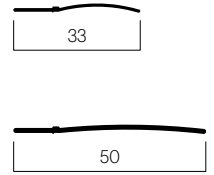
Terminal



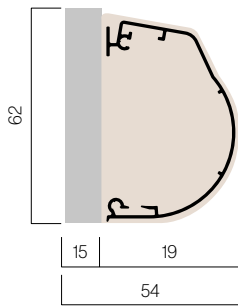
Intra box



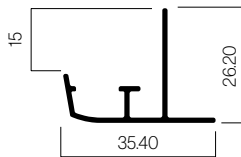
Intra Guides



Avant box



Avant Guides

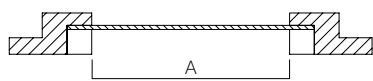


## Moulding dimension

### Moulding • Intra system

Take measurements A and B according to the type of moulding. The difference between the two may never exceed the measurements indicated in the table according to the guide model.

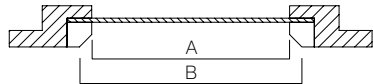
Straight 90°



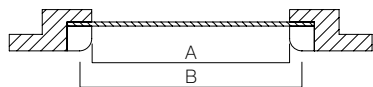
Guide 50  
B-A = 50 mm

Guide 33  
B-A = 25 mm

Sloping



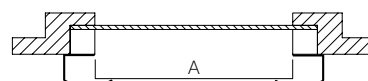
Round



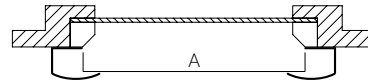
### Moulding • Extra system

For manufacturing it is essential to always take measurement A. Please note that the EXTRA system increases distance A by 28.50 mm on each side.

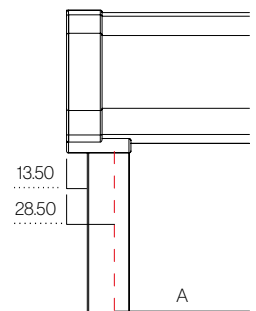
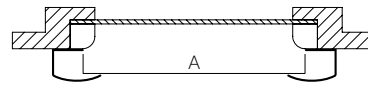
Straight 90°



Sloping



Round

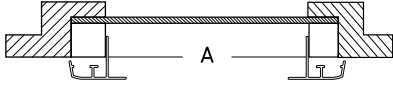


# Technical characteristics

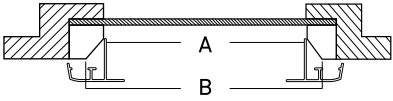
## Moulding dimension

### Moulding • Avant system

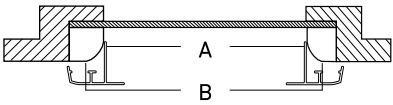
#### Straight 90°



#### Sloping



#### Rouand



### Moulding depth

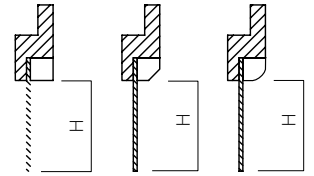
It is only taken into account with the Avant System.

\*For Avant systems the depth shall be greater than or equal to 15 mm.



### Moulding height

Height is measured the same in both systems.



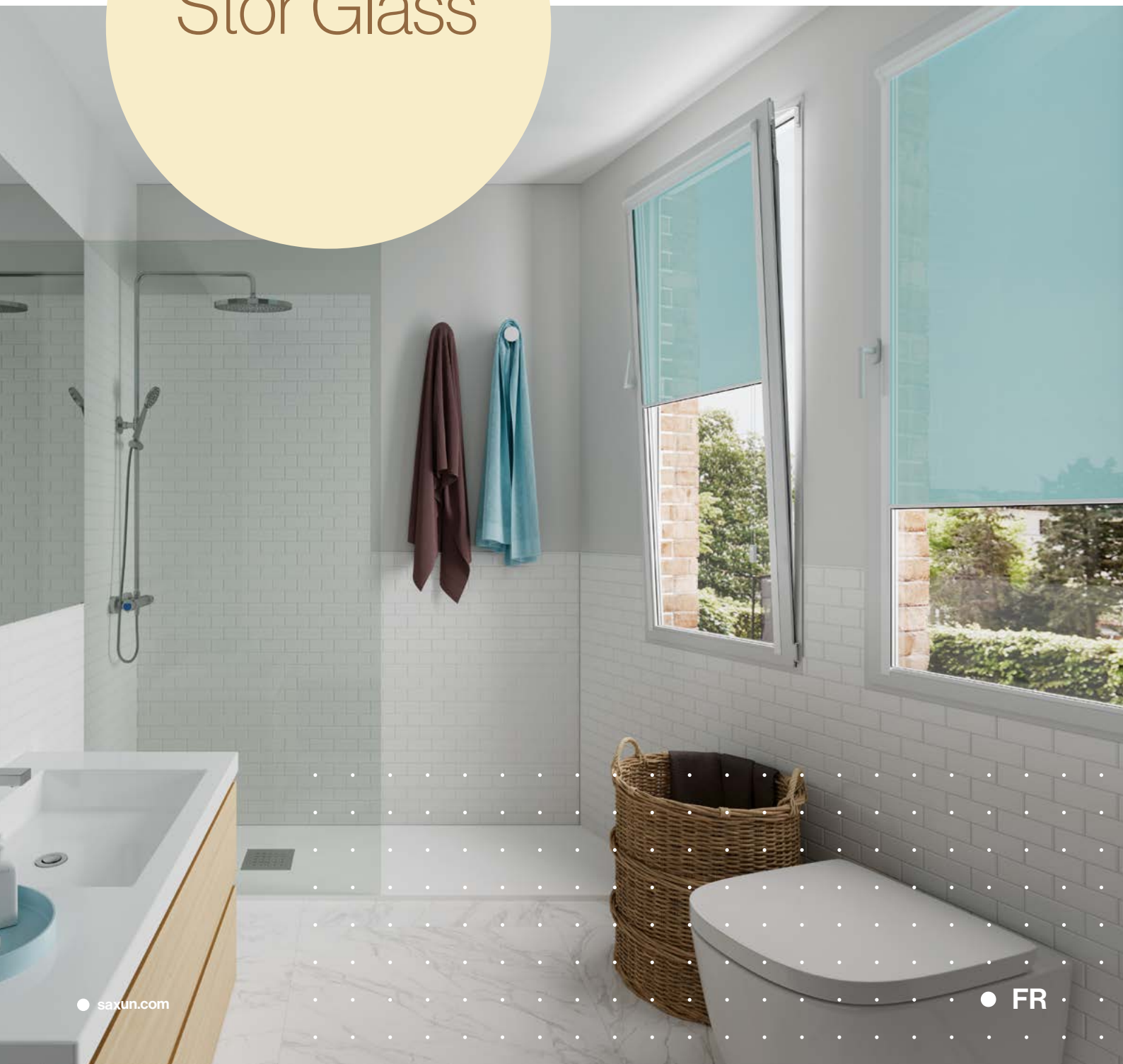
Your world,  
our universe.

FT. STOR GLASS · EN · 03 · 1122



— Fiche technique

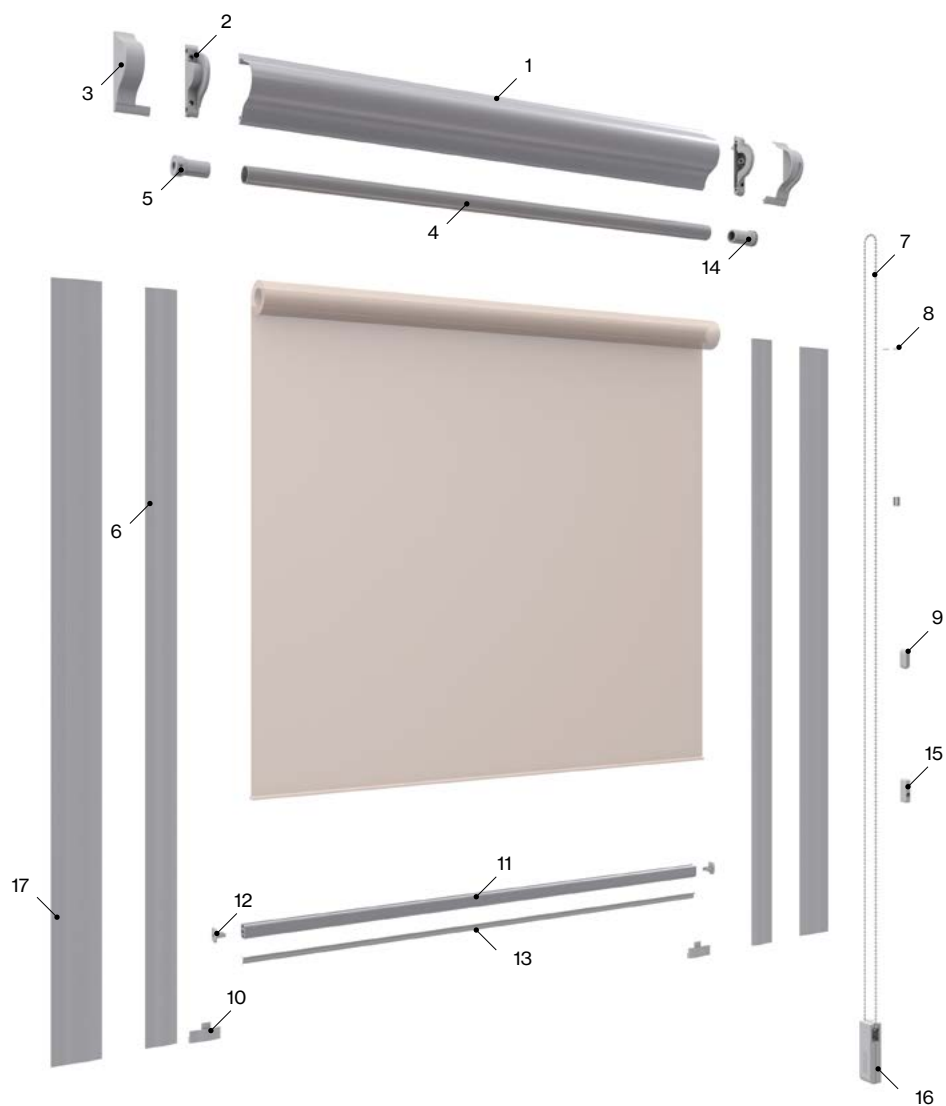
# Stor Glass



# Modèles

## Système Intra

030049 Stor Glass intra



### Composantes

N°	Cód.	Descripción	N°	Cód.	Descripción
1	030024	Caisson Stor Glass	10	030039	Embout coulisse (uniquement coulisse 33 mm)
2	030034	Paire de joues	11	030027	Lame finale aluminium
3	030033	Cache enjoliveur	12	030041	Embout lame finale aluminium
4	030028	Axe 18 mm	13	030031	Joint gomme
5	030038	Embout	14	030037	Mécanisme
6	030025	Coulisse aluminium	15	030047	Chaîne de fixation
7	030042	Chaîne PVC 3,2x6	16	030775	Contrepoids chaîne Slim M
8	030044	Embouts chaîne	17	030946	Coulisse aluminium 50
9	030045	Union chaîne			

### Mesures de fabrication

#### Maximums

Largeur	<b>1,20 m</b>
Hauteur	<b>Selon le tissu</b>

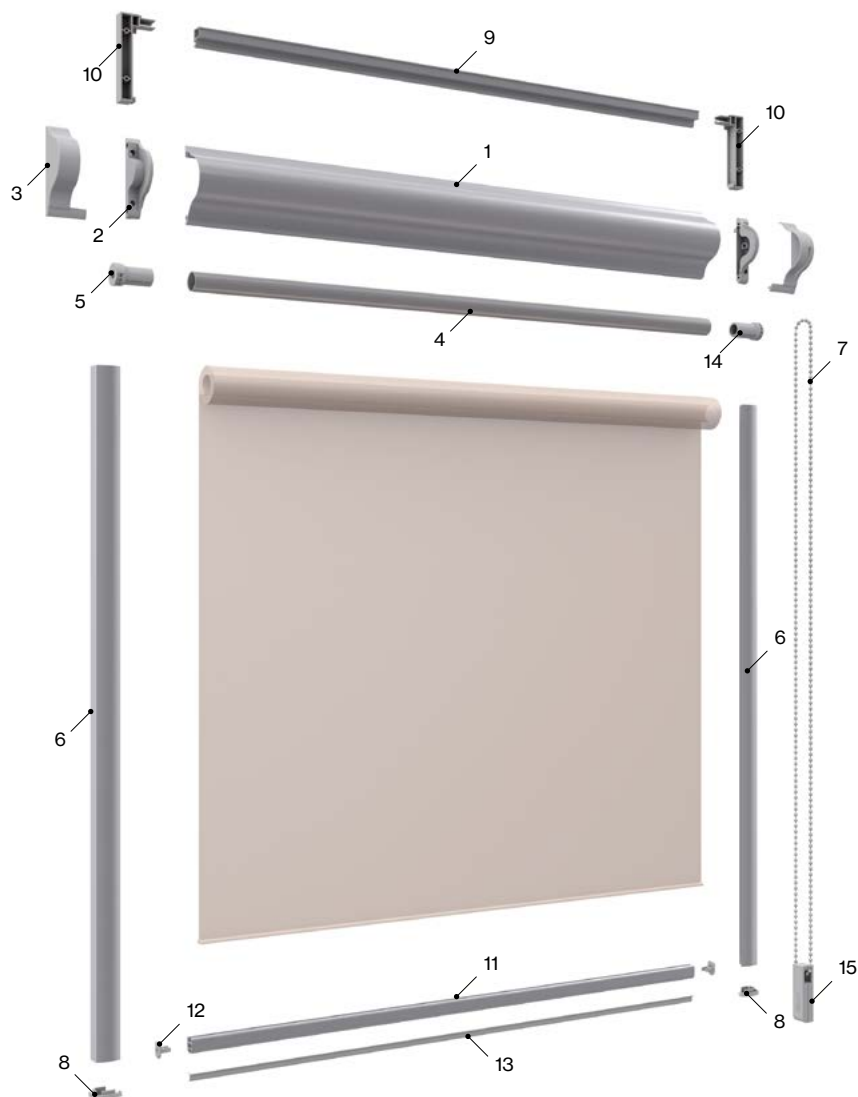
#### Minimums

Largeur	<b>0,40 m</b>
Hauteur	<b>0,30 m</b>

# Modèles

## Systeme Extra

031400 Stor Glass extra



### Componentes

Nº	Cód.	Descripción	Nº	Cód.	Descripción
1	030024	Caisson Stor Glass	9	031207	Profil d'espacement
2	030034	Paire de joues	10	031209	Paire d'angles pour profil d'espacement
3	030033	Cache enjoliveur	11	030027	Lame finale aluminium
4	030028	Axe 18 mm	12	030041	Embout lame finale aluminium
5	030038	Embout	13	030031	Joint gomme
6	031208	Coulisse aluminium type C	14	030037	Mécanisme
7	030042	Chaîne PVC 3,2x6	15	030775	Contrepoids chaîne Slim M
8	031210	Paire d'embout coulisse type C			

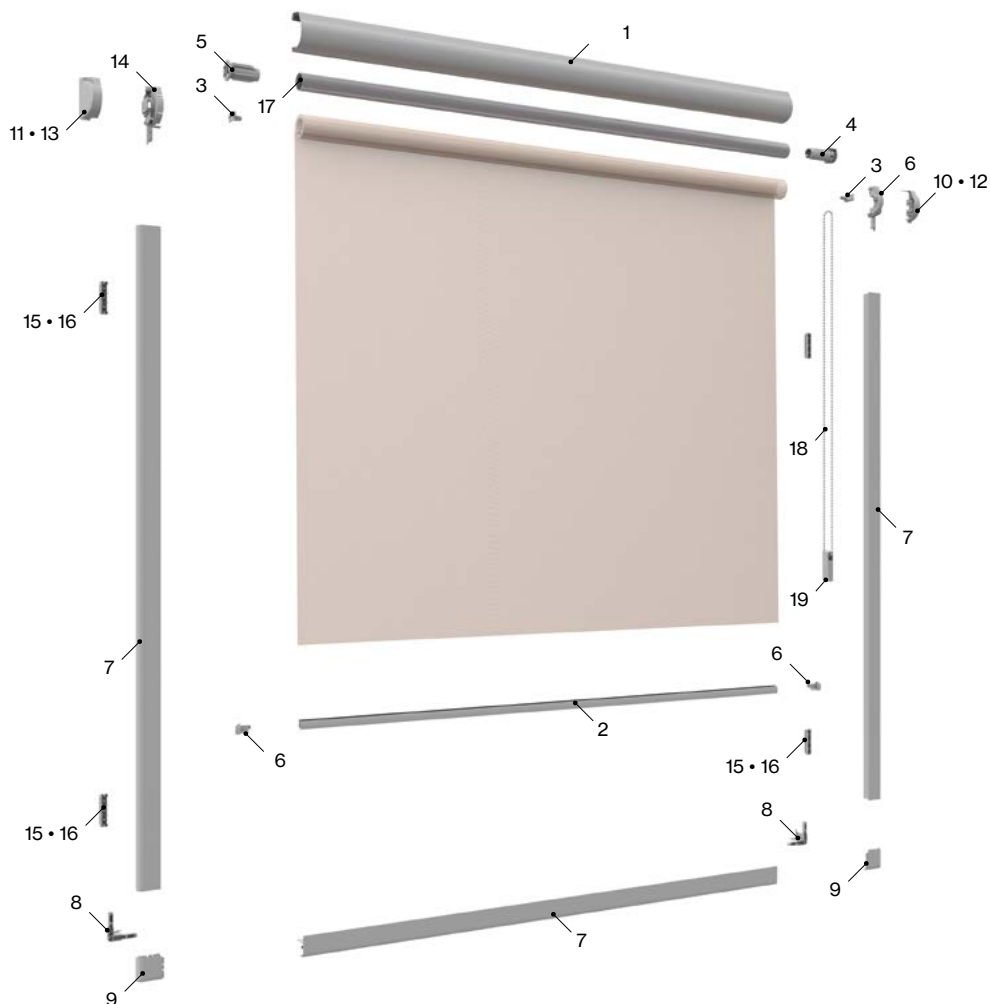
### Mesures de fabrication

Maximums		Minimums	
Largeur	<b>1,20 m</b>	Largeur	<b>0,40 m</b>
Hauteur	<b>Selon le tissu</b>	Hauteur	<b>0,30 m</b>

# Modèles

## Systeme Avant

031500 Stor Glass Avant à chaîne



### Componentes

Nº	Cód.	Descripción	Nº	Cód.	Descripción
1	031258	Caisson profil 39 mm XS	11	031246	Couverture Cajon chaîne droite XS
2	031261	Contrepoids profil XS	12	031247	Pont Cajon à ressort gauche XS
3	031262	Platine de fixation XS	13	031248	Pont Cajon à ressort droit XS
4	031263	Mécanisme à enroulement XS cassette	14	031249	Guide tête de tiroir 39 mm XS
5	031266	Butée finale 19 mm XS	15	031251	Clip de fixation de fenêtre XS
6	031280	Butée contrepoids XS	16	031253	Ruban de fixation de fenêtre XS
7	031241	Profil facile à ajuster 580 cm XS	17	031256	Tube enroulable alu. avec double bande
8	031242	Union coin XS	18	030042	Chaîne PVC 3,2x6
9	031243	Couverture d'angle blanc ABS XS	16	030775	Tensor Slim M
10	031245	Couverture Cajon chaîne gauche. XS			

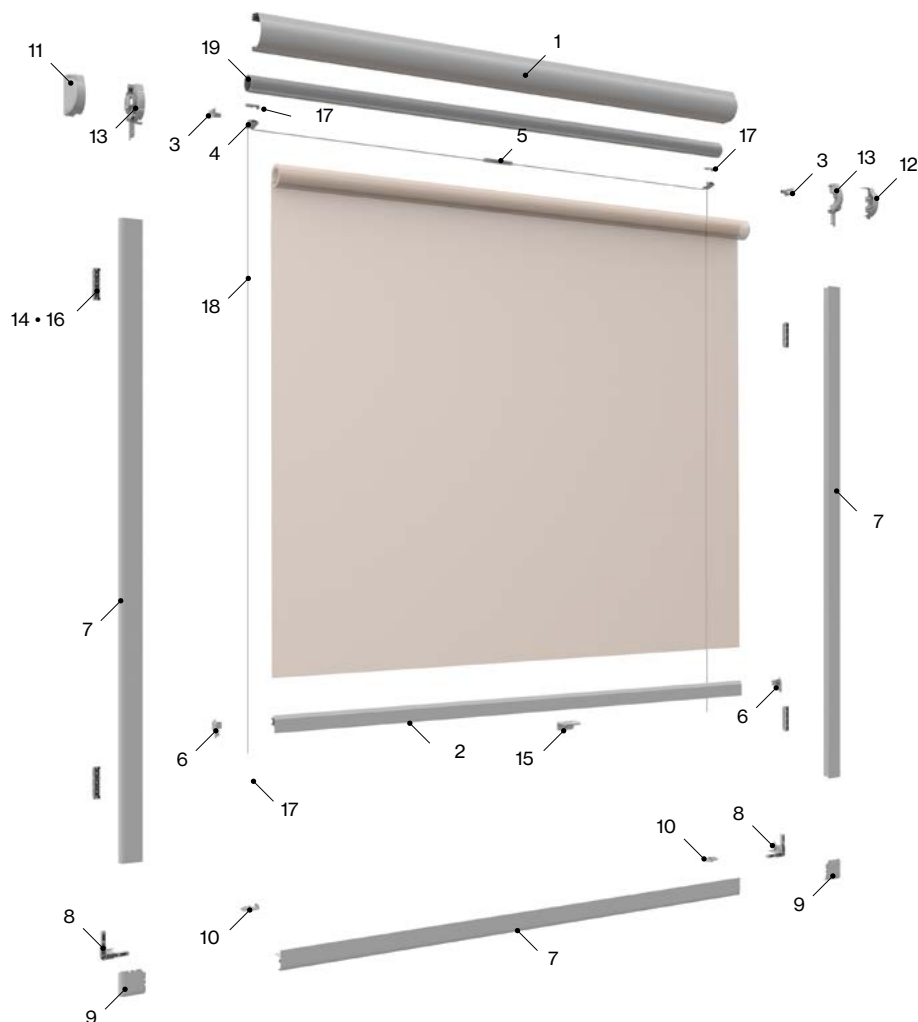
### Mesures de fabrication

Maximums		Minimums	
Largeur	<b>1,20 m</b>	Largeur	<b>0,30 m</b>
Hauteur	<b>Selon le tissu</b>	Hauteur	<b>0,30 m</b>

# Modèles

## Système Avant

031500 Stor Glass Avant à ressort



### Éléments

N°	Réf.	Description	N°	Réf.	Description
1	031258	Caisson profil 39 mm XS	11	031247	Pont Cajon gauche XS
2	031259	Profil tendu contreponds XS	12	031248	Pont Cajon droite XS
3	031262	Platine de fixation XS	13	031249	Caisson 39 mm cadre intérieur XS
4	031277	Câble positionneur XS	14	031251	Clip de fixation de fenêtre XS
5	031278	Limiteur de ressort XS	15	031252	Poignée pour PLC20XS
6	031279	Cale à contreponds tendu XS	16	031253	Ruban de fixation de fenêtre XS
7	031241	Profil facile à ajuster 580 cm XS	17	031254	Tensor de cuerda sin clip
8	031242	Union coin XS	18	029203	Cordon plissé 0.80
9	031243	Couverture d'angle blanc ABS XS	19	031256	Tube enroulable alu. avec double bande
10	031244	Tension shoe XS			

### Mesures de fabrication

#### Maximums

Largeur	<b>1,20 m</b>
Hauteur	<b>Selon le tissu</b>

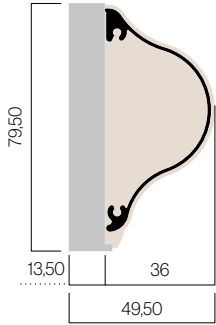
#### Minimums

Largeur	<b>0,30 m</b>
Hauteur	<b>0,30 m</b>

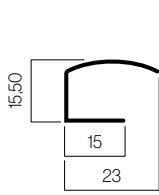
# Caractéristiques techniques

## Profils

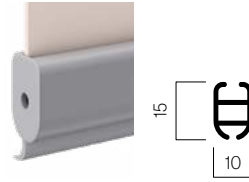
Caisson Extra



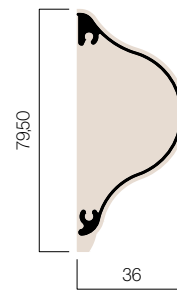
Coulisse Extra



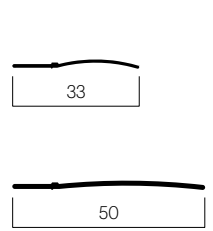
Lame finale



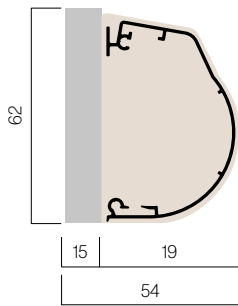
Caisson Intra



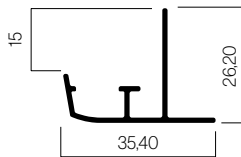
Coulisse Intra



Caisson Avant



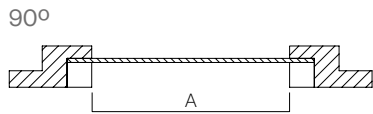
Coulisse Avant



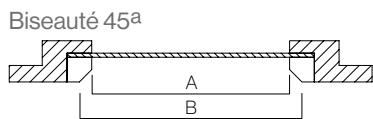
## Ddimension parclose

### Parclose • Système Intra

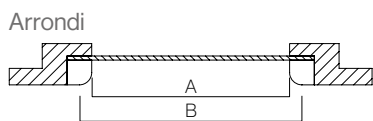
Tomar las medidas A y B según el tipo de junquillo.  
La diferencia entre ambas nunca podrá superar las medidas indicadas según el modelo de guía.



Guide50  
B-A = 50 mm

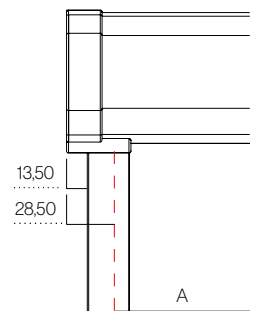
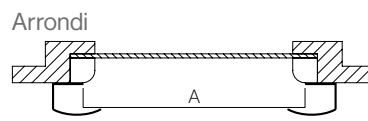
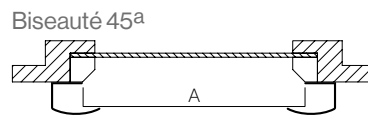
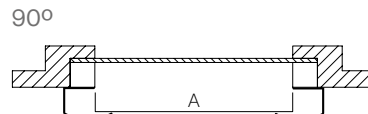


Guide33  
B-A = 25 mm



### Parclose • Système Extra

Para la fabricación es imprescindible tomar siempre la medida A.  
Tener en cuenta que el Sistema Extra aumenta 28,50 mm en cada lado respecto la distancia A.

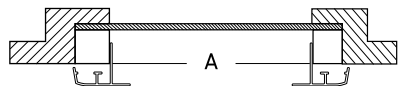


# Caractéristiques techniques

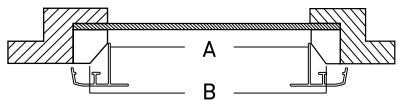
## Ddimension parclose

### Parclose • Système Avant

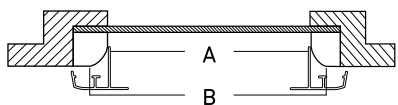
90°



Biseauté 45°



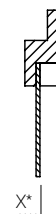
Arrondi



### Profondeur du parclose

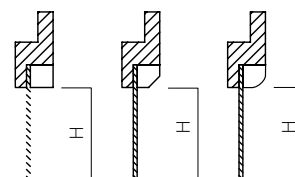
Seul le système Avant est pris en compte.

\*Pour les systèmes Avant, la profondeur doit être supérieure ou égale à 15 mm.



### Hauteur parclose

La hauteur est mesurée égale dans les deux systèmes



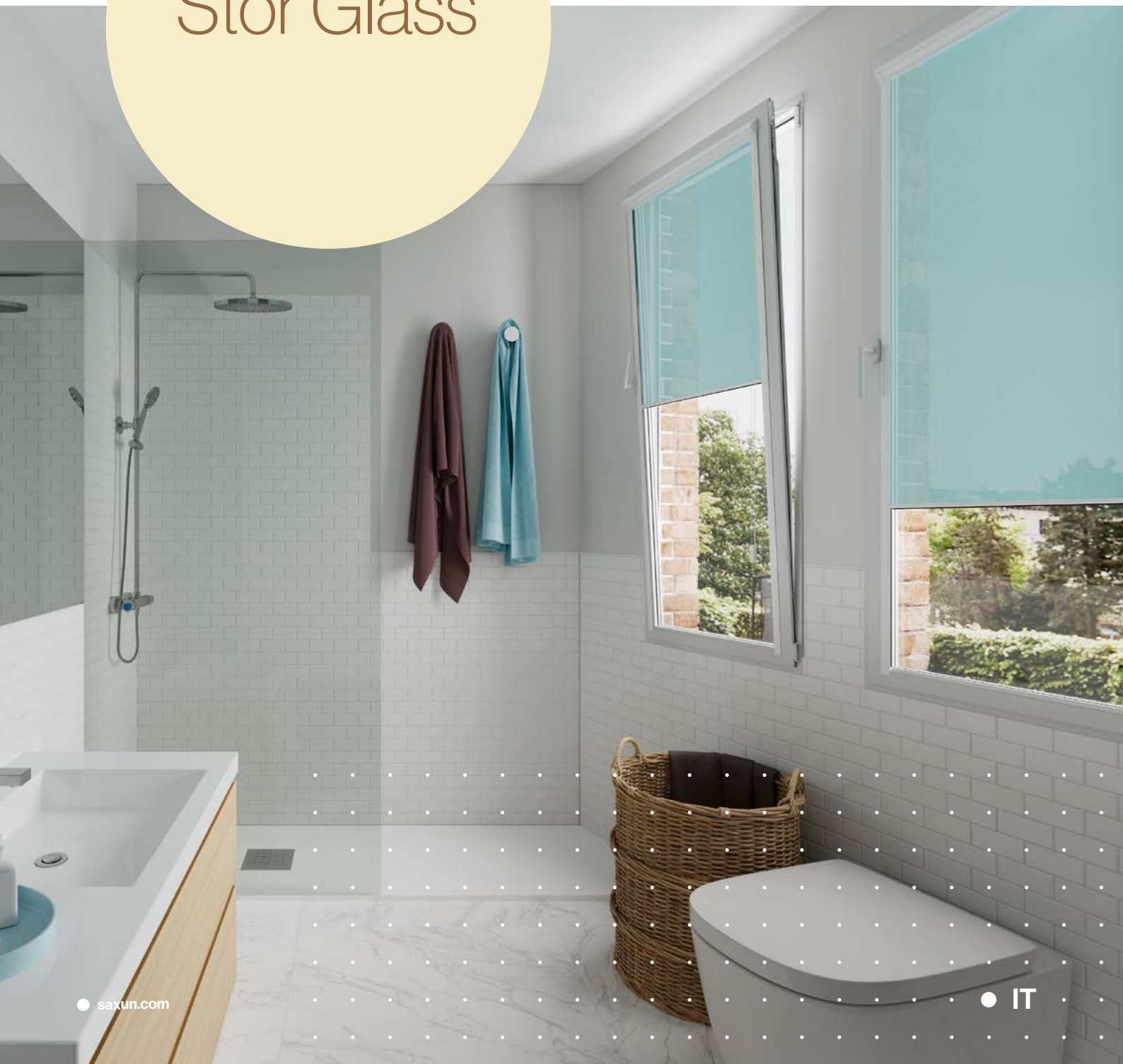
Votre monde,  
notre univers.

FT. STOR GLASS · FR · 03 · 1122



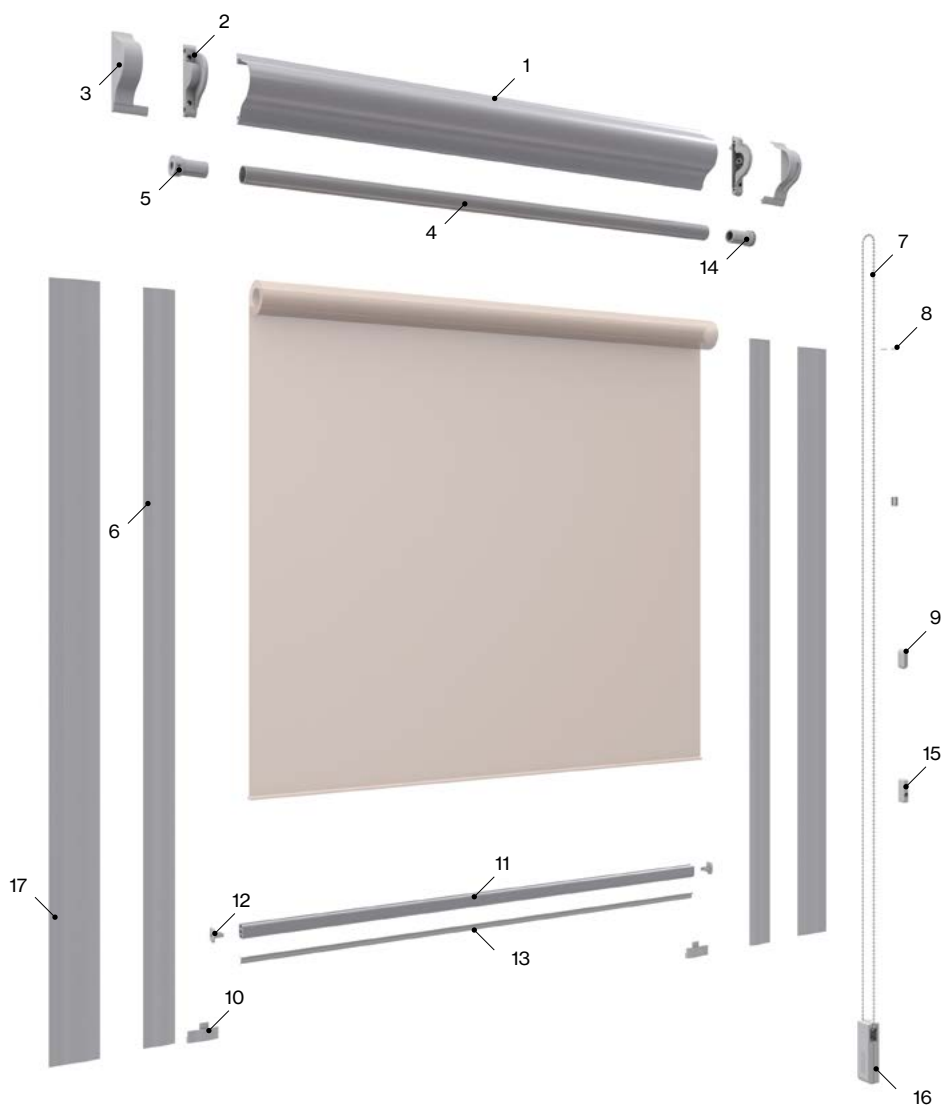
— Scheda tecniche

# Stor Glass



## Sistema Intra

030049 Stor Glass intra



### Componenti

N°	Codice	Descrizione	N°	Codice	Descrizione
1	030024	Cassonetto Stor Glass	10	030039	Tappo guida (solo guida da 33 mm)
2	030034	Kit testate	11	030027	Terminale in alluminio
3	030033	Rosone	12	030041	Tappo terminale
4	030028	Rullo da 18 mm	13	030031	Gomma impermeabile
5	030038	Capsula	14	030037	Meccanismo
6	030025	Guida in alluminio 33 mm	15	030047	Regolazione catena
7	030042	Catena in PVC 3,2x6	16	030775	Tenditore Slim M
8	030044	Fermicatena	17	030946	Guida in alluminio 50
9	030045	Unione catena			

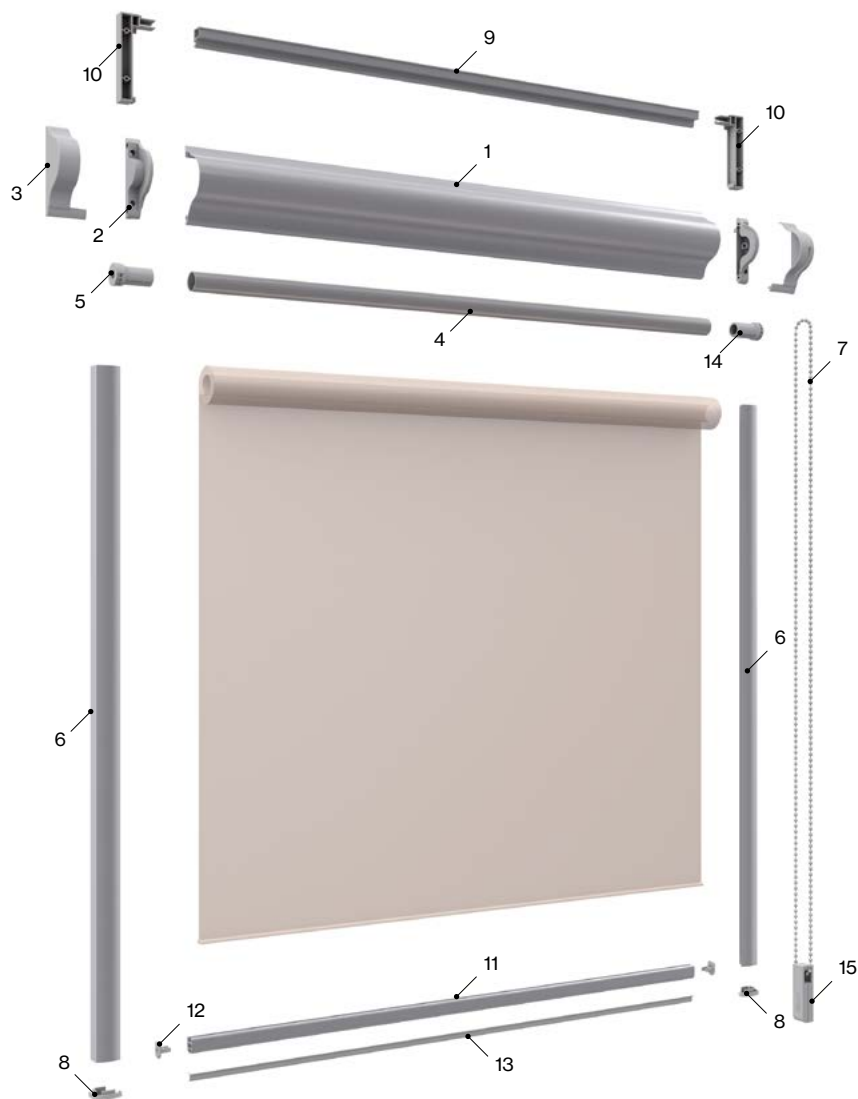
### Misure di produzione

Massimo		Minimo	
Larghezza	<b>1,20 m</b>	Larghezza	<b>0,40 m</b>
Altezza	<b>Secondo i tessuti</b>	Altezza	<b>0,30 m</b>

Modeli

**Sistema Extra**

031400 Stor Glass extra



**Componenti**

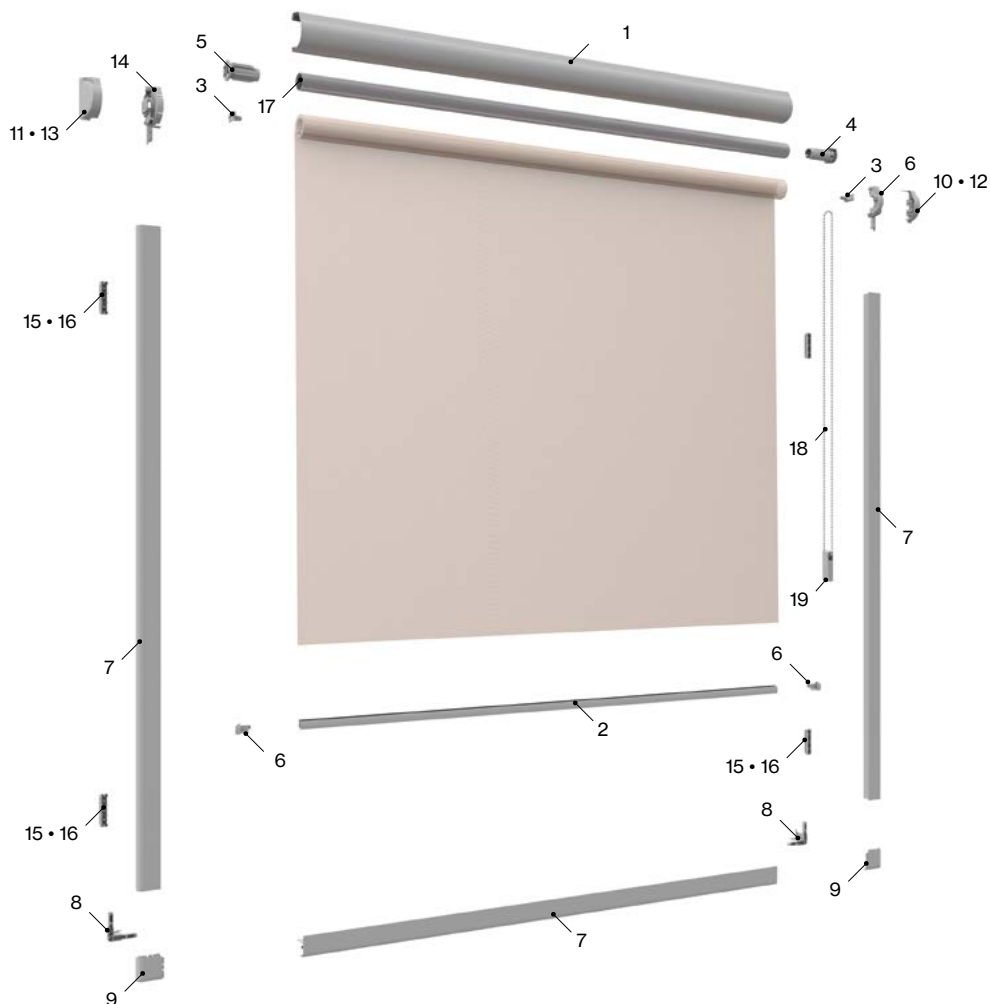
N°	Codice	Descrizione	N°	Codice	Descrizione
1	030024	Cassonetto Stor Glass	9	031207	Profilo distanziatore
2	030034	Kit testate	10	031209	Kit angolare per distanziatore
3	030033	Anello	11	030027	Terminale in alluminio
4	030028	Rullo da 18 mm	12	030041	Tappo terminale
5	030038	Capsula	13	030031	Gomma impermeabile
6	031208	Guida in alluminio tipo C	14	030037	Meccanismo
7	030042	Catena in PVC 3,2x6	15	030775	Tenditore Slim M
8	031210	Kit di tappi guida tipo C			

**Misure di produzione**

Massimo		Minimo	
Larghezza	<b>1,20 m</b>	Larghezza	<b>0,40 m</b>
Altezza	<b>Secondo i tessuti</b>	Altezza	<b>0,30 m</b>

## Sistema Avant

031500 Stor Glass Avant a catena



### Componenti

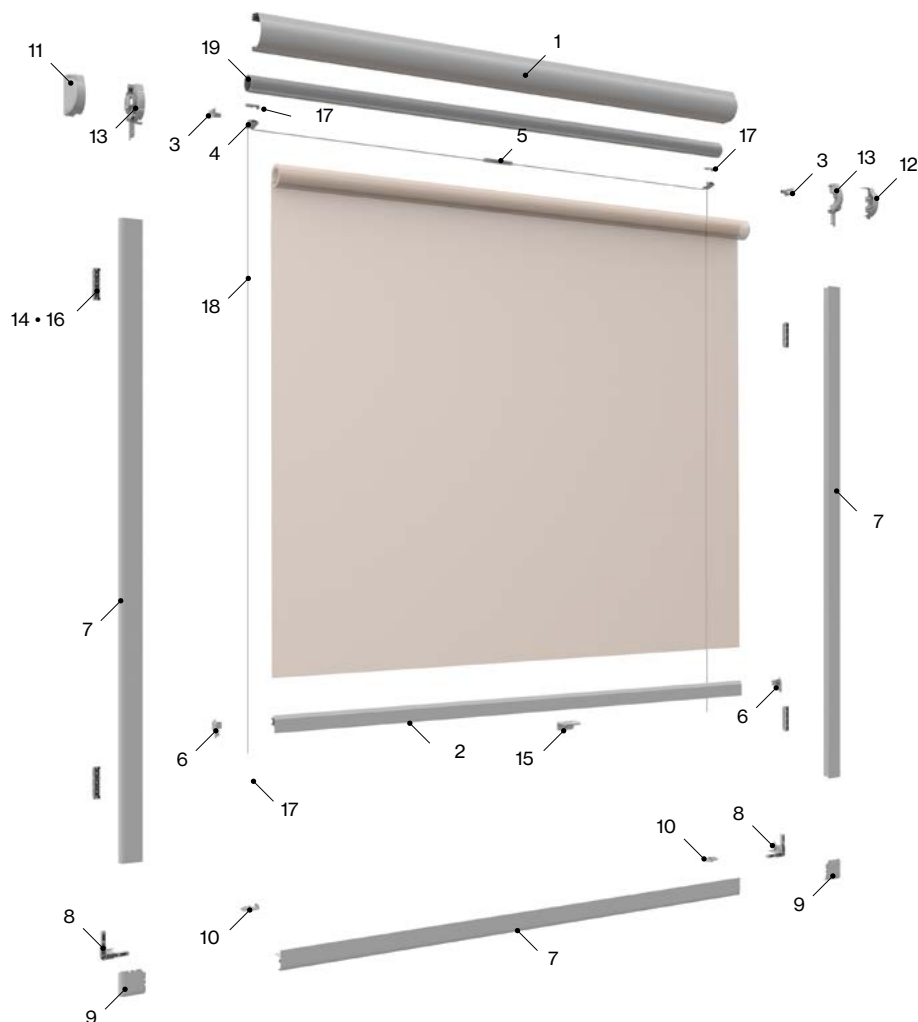
N°	Codice	Descrizione	N°	Codice	Descrizione
1	031258	Cassonetto profilo 39 mm XS	11	031246	Cassettiera catena destra XS
2	031261	Profilo contrappeso XS	12	031247	Copertura cassonetto a molla sinistro XS
3	031262	Pletina fissaggio XS	13	031248	Copertura cassonetto a molla destra XS
4	031263	Meccanismo avvolgibile XS cassetto	14	031249	Testata cassetto guida 39 mm XS
5	031266	Battuta finale 19 mm XS	15	031251	Clip di fissaggio per finestre XS
6	031280	Battuta contrappeso XS	16	031253	Nastro di fissaggio per finestre XS
7	031241	Profilo facile regolazione 580 cm XS	17	031256	Tubo enrollable alu. con cinta doble
8	031242	Unione angolo XS	18	030042	Cadeno PVC 3,2x6
9	031243	Copertura angolo bianco ABS XS	16	030775	Tensor Slim M
10	031245	Copertura cassetiera catena sinistra XS			

### Misure di produzione

Massimo		Minimo	
Larghezza	<b>1,20 m</b>	Larghezza	<b>0,30 m</b>
Altezza	<b>Secondo i tessuti</b>	Altezza	<b>0,30 m</b>

## Sistema Avant

031500 Stor Glass Avant a muelle



### Componenti

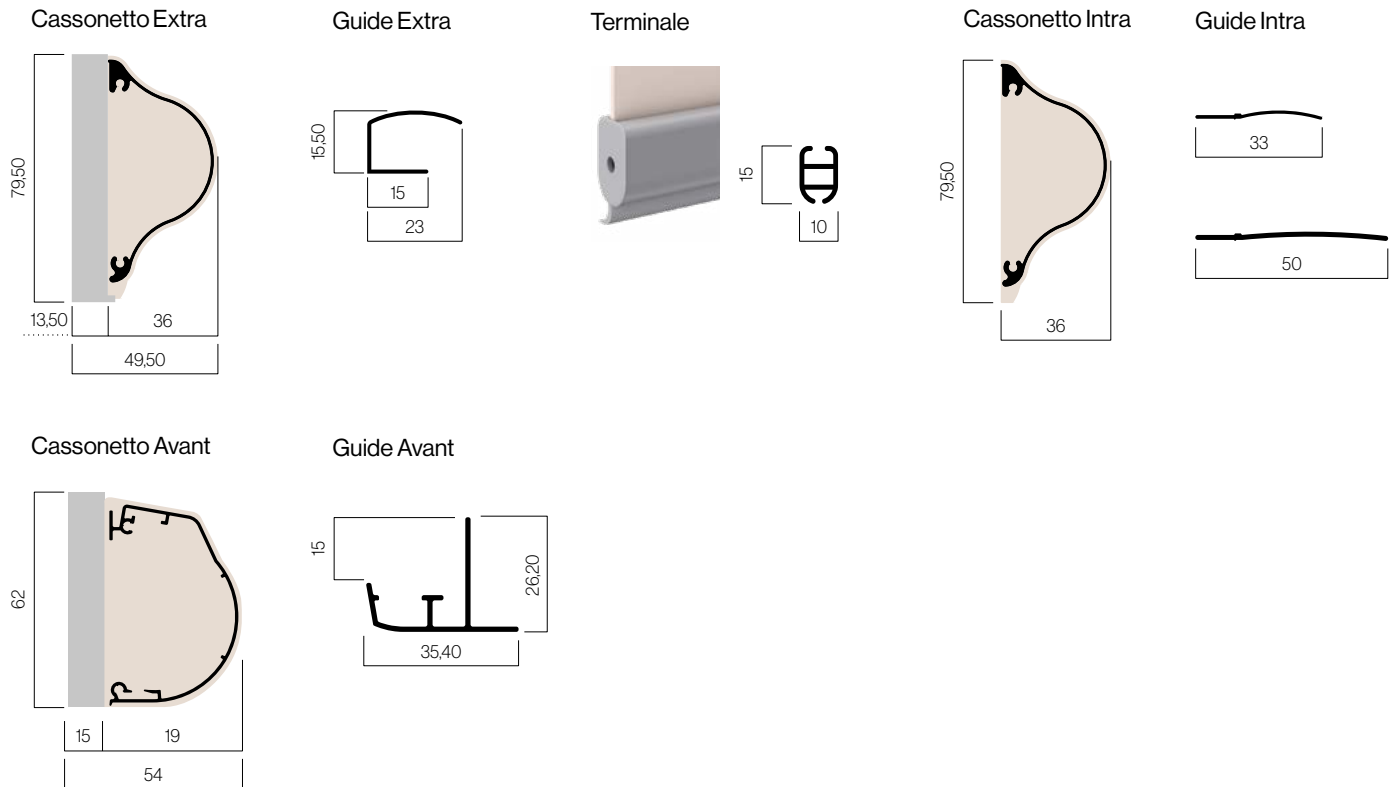
N°	Codice	Descrizione	N°	Codice	Descrizione
1	031258	Cassonetto profilo 39 mm XS	11	031247	Copertura cassonetto sinistro XS
2	031259	Contrappeso profilo tensionato XS	12	031248	Copertura cassonetto destra XS
3	031262	Pletina fissaggio XS	13	031249	Cassonetto 39 mm cornice interna XS
4	031277	Cavo di posizionamento XS	14	031251	Clip di fissaggio per finestre XS
5	031278	Limitatore molla XS	15	031252	Maniglia per PLC20XS
6	031279	Battuta controbilanciata tensionata XS	16	031253	Nastro di fissaggio per finestre XS
7	031241	Profilo facil regolabile 580 cm XS	17	031254	Tendicorda senza pinza
8	031242	Unione angolo XS	18	029203	Cordone plissettato 0,80
9	031243	Copertura angolo bianco ABS XS	19	031256	Tubo avvolgibile alu. con doppio nastro
10	031244	Tension shoe XS			

### Misure di produzione

Massimo		Minimo	
Larghezza	<b>1,20 m</b>	Larghezza	<b>0,30 m</b>
Altezza	<b>Secondo i tessuti</b>	Altezza	<b>0,30 m</b>

# Caratteristiche tecniche

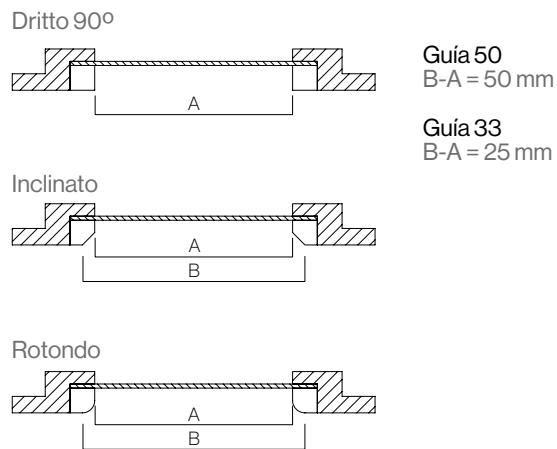
## Profili



## Dimensione fermavetro

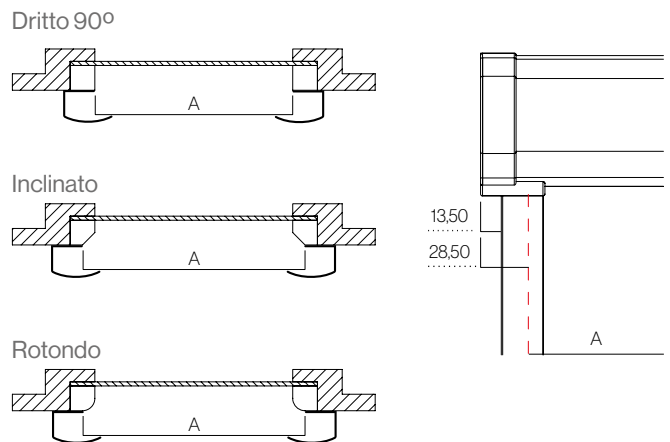
### Fermavetro • Sistema Intra

Prendere le misure A e B a seconda del tipo di fermavetro. La differenza tra i due non deve mai superare le misure indicate in tabella secondo il modello di guida.



### Fermavetro • Sistema Extra

Per la produzione è essenziale prendere sempre la misura A. Si prega di notare che il sistema EXTRA aumenta di 28,50 m su ogni lato rispetto alla distanza A.

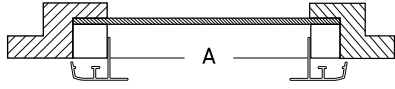


# Caratteristiche tecniche

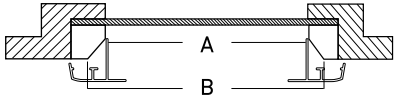
## Dimensione fermavetro

### Fermavetro • Sistema Avant

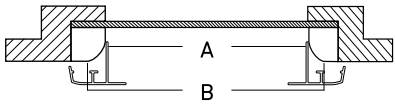
Dritto 90°



Inclinato



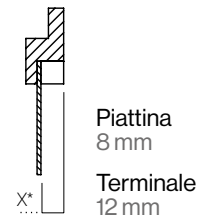
Rotondo



### Profondità fermavetro

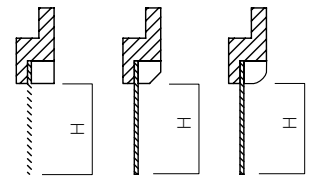
Si tiene conto solo del sistema Avant .

\*Per i sistemi Avant la profondità deve essere pari o superiore a 15 mm.



### Altezza fermavetro

L'altezza viene misurata allo stesso modo in entrambi i sistem.

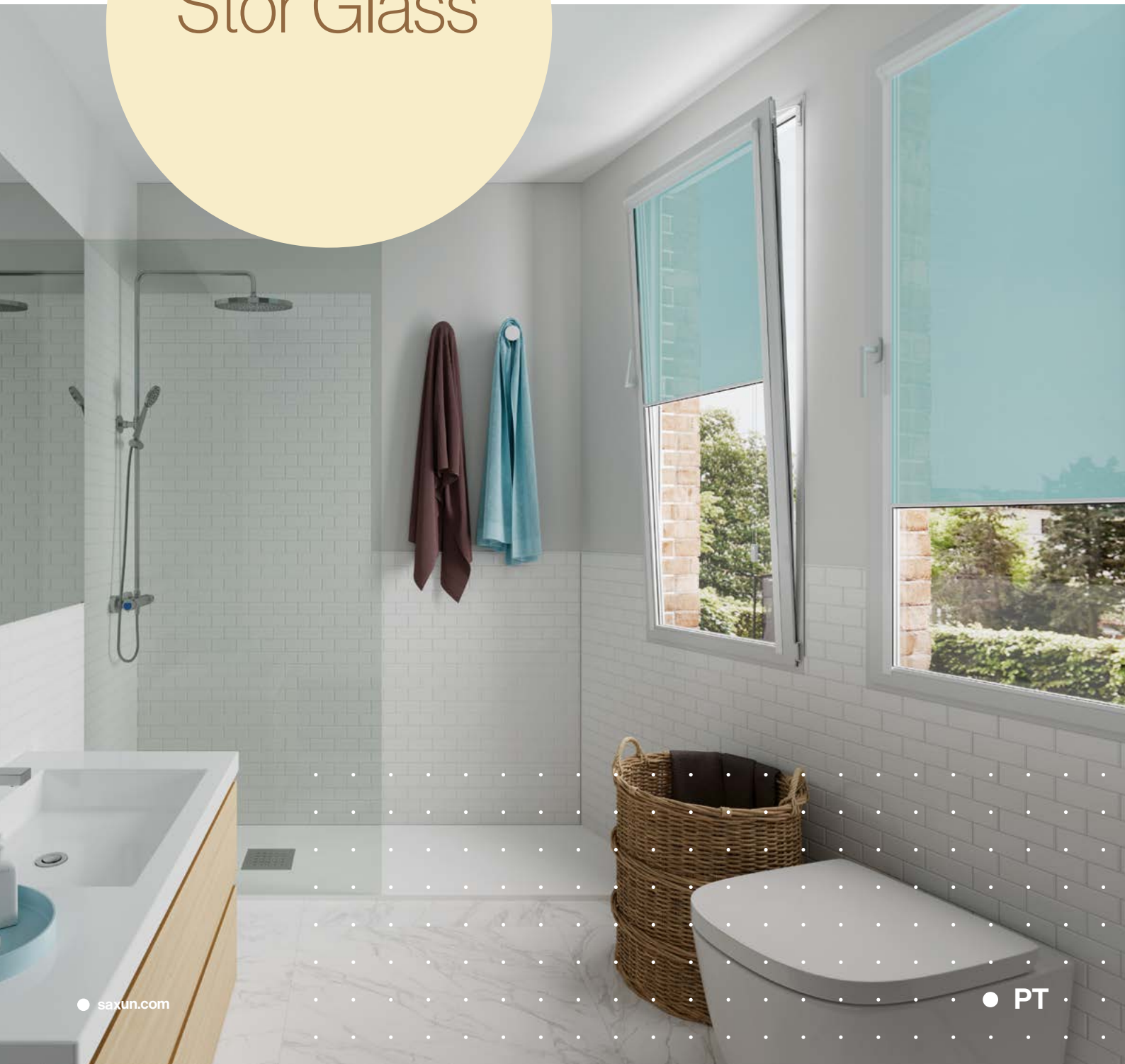


Il tuo mondo,  
il nostro universo.



— Folha técnica

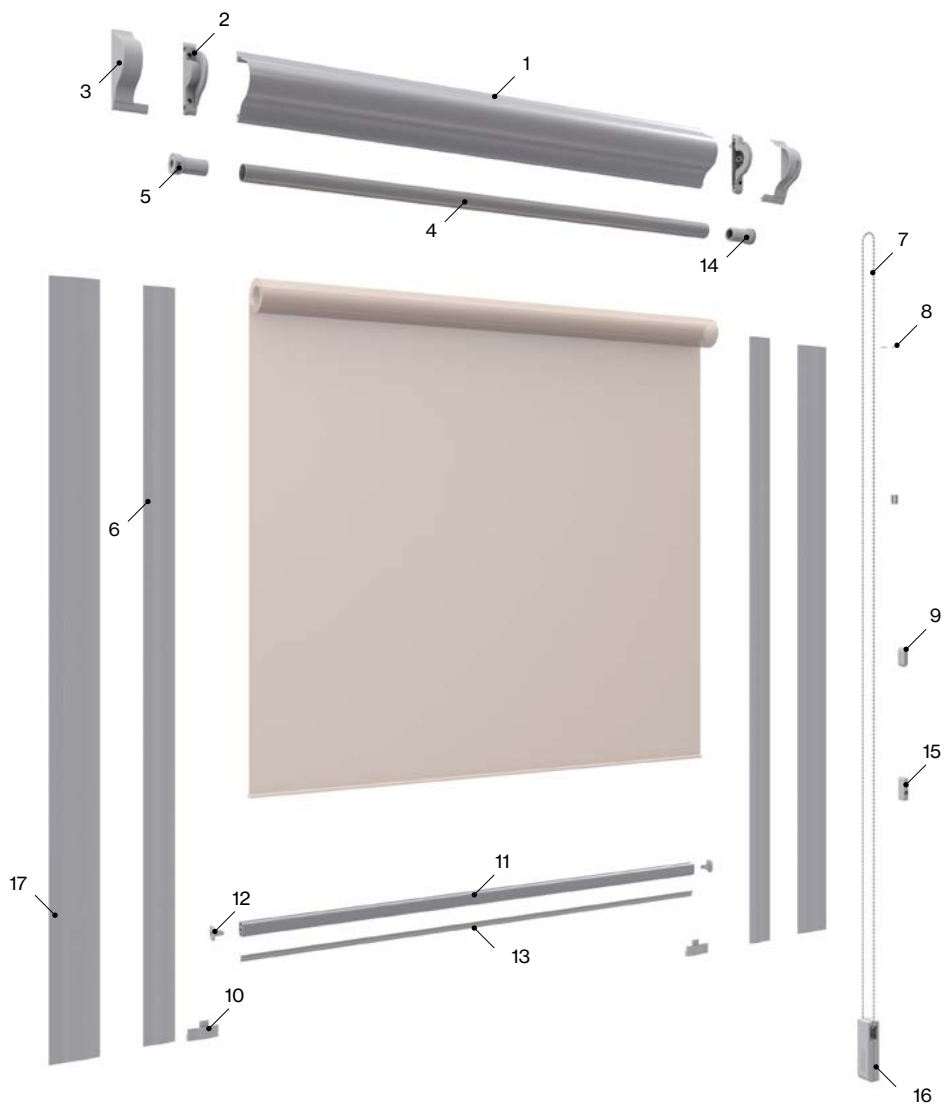
# Stor Glass



# Modelos

## Sistema Intra

030049 Stor Glass intra



### Componentes

Nº	Cód.	Descrição	Nº	Cód.	Descrição
1	030024	Gaveta Stor Glass	10	030039	Tampa guia (só guia 33 mm)
2	030034	Conjunto testeiros	11	030027	Terminal alumínio
3	030033	Friso embelezador	12	030041	Tampão terminal
4	030028	Eixo 18 mm	13	030031	Borracha estanque
5	030038	Cápsula	14	030037	Mecanismo
6	030025	Guia alumínio 33 mm	15	030047	Fixação da corrente
7	030042	Corrente PVC 3,2x6	16	030775	Tensor Slim M
8	030044	Topos corrente	17	030946	Guia alumínio 50
9	030045	União corrente			

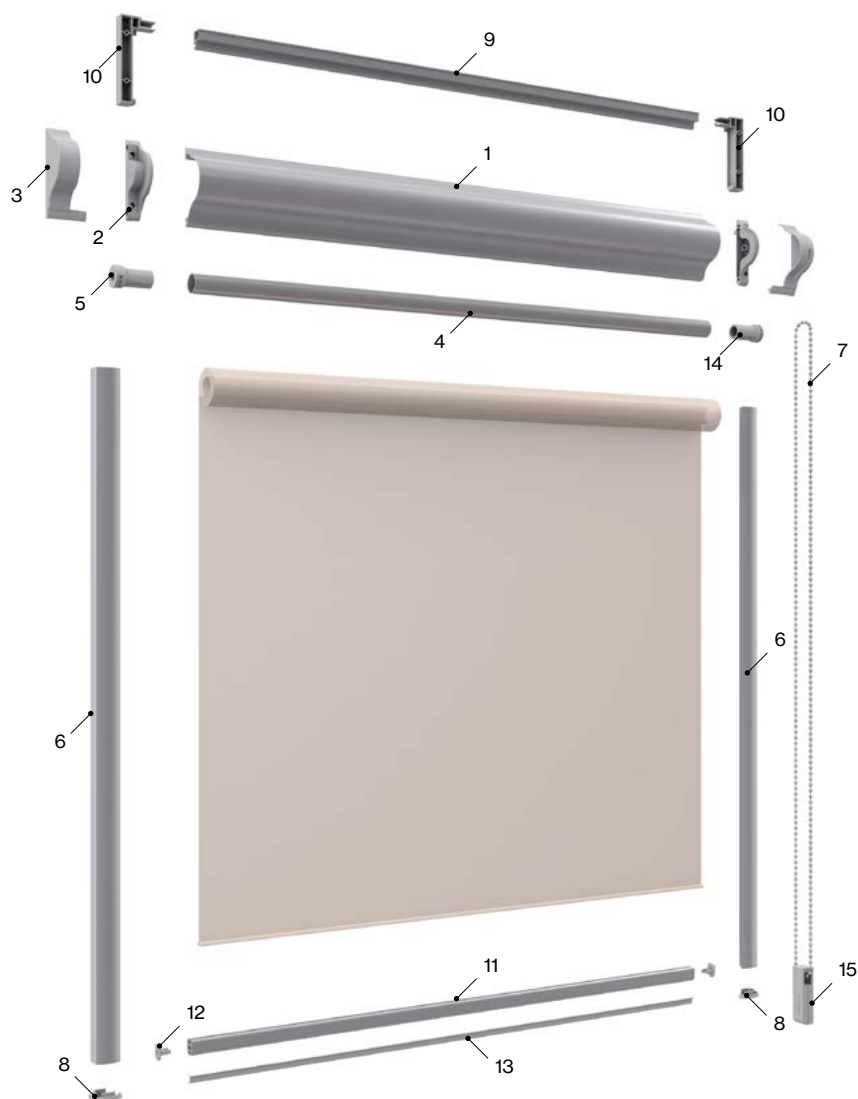
### Medidas de fabricação

Máximos		Mínimos	
Largura	<b>1,20 m</b>	Largura	<b>0,40 m</b>
Altura	<b>Según tejido</b>	Altura	<b>0,30 m</b>

# Modelos

## Sistema Extra

031400 Stor Glass extra



### Componentes

Nº	Cód.	Descrição	Nº	Cód.	Descrição
1	030024	Gaveta Stor Glass	9	031207	Perfil espaçador
2	030034	Conjunto testeiros	10	031209	Jogo esquina para espaçador
3	030033	Friso embelezador	11	030027	Terminal alumínio
4	030028	Eixo 18 mm	12	030041	Tampão terminal
5	030038	Cápsula	13	030031	Borracha estanque
6	031208	Guia alumínio tipo C	14	030037	Mecanismo
7	030042	Corrente PVC 3,2x6	15	030775	Tensor Slim M
8	031210	Jogo tampa guia tipo C			

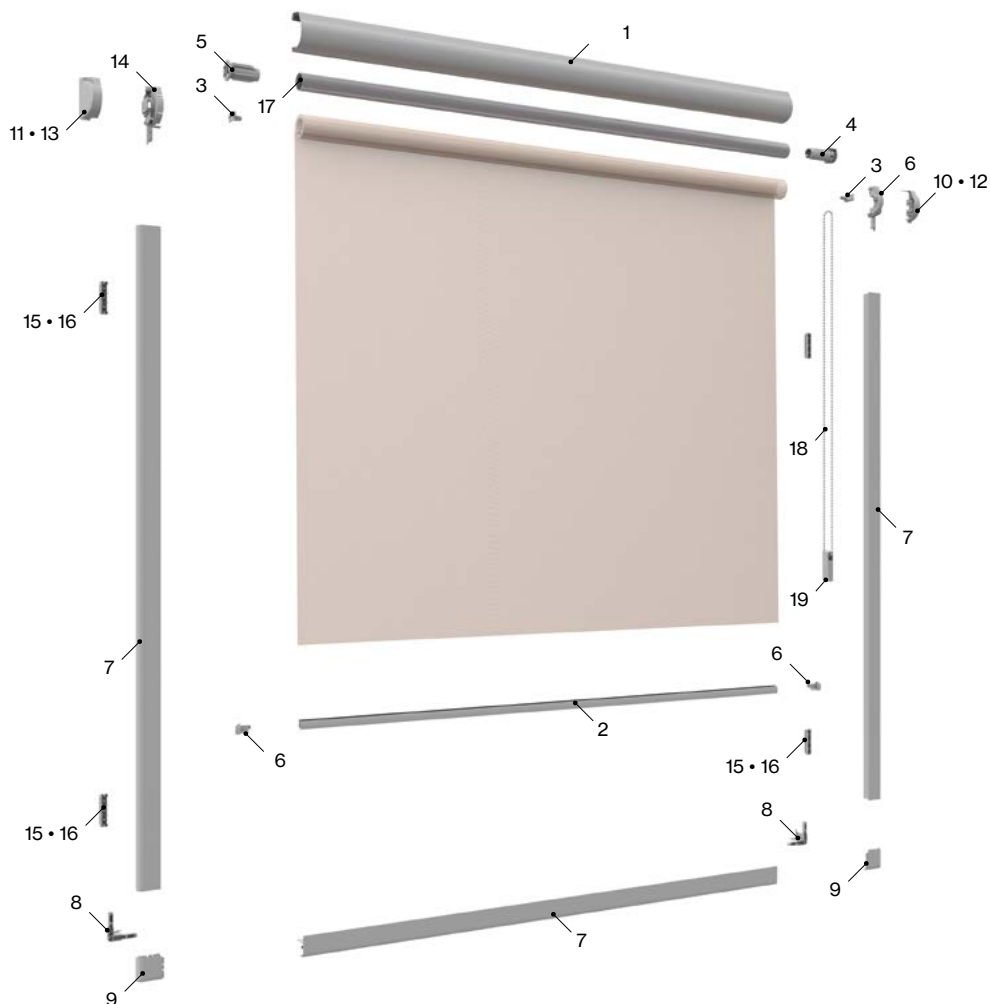
### Medidas de fabricação

Máximos		Mínimos	
Largura	<b>1,20 m</b>	Largura	<b>0,40 m</b>
Altura	<b>Según tejido</b>	Altura	<b>0,30 m</b>

# Modelos

## Sistema Avant

031500 Stor Glass Avant a cadena



### Componentes

Nº	Cód.	Descrição	Nº	Cód.	Descrição
1	031258	Gaveta perfil 39 mm XS	11	031246	Tampa gaveta de cadeia direita XS
2	031261	Contrapeso perfil XS	12	031247	Tampa gaveta de mola esquerda XS
3	031262	Fixação Pletina XS	13	031248	Tampa gaveta da mola direita XS
4	031263	Mecanismo de enrolamento XS cassete	14	031249	Cabeça de gaveta guia 39 mm XS
5	031266	Batente final 19 mm XS	15	031251	Clipe de fixação da janela XS
6	031280	Batente contrapeso XS	16	031253	Fita de fixação da janela XS
7	031241	Perfil fácil de ajuste 580 cm XS	17	031256	Tubo enrollable alu. com fita dupla
8	031242	Junção canto XS	18	030042	Cadeia PVC 3,2x6
9	031243	Tampa canto branco ABS XS	19	030775	Tensor Slim M
10	031245	Capa gaveta string izqda. XS			

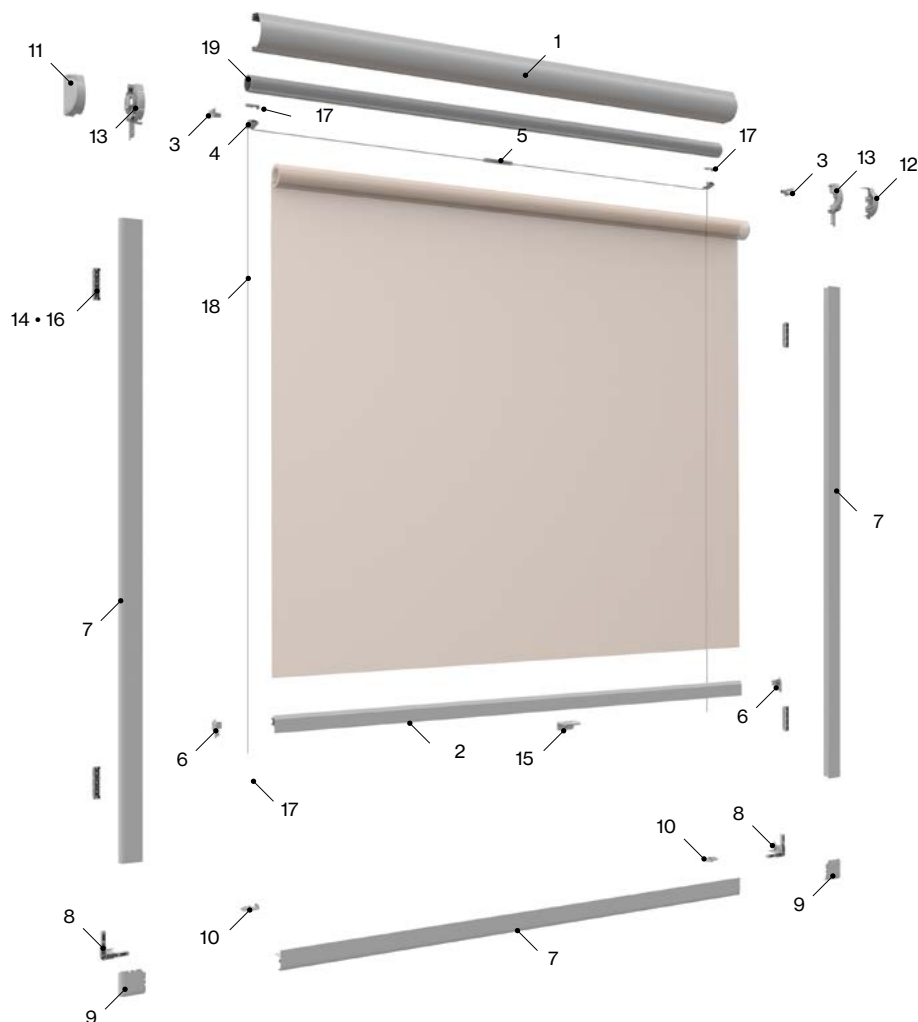
### Medidas de fabricação

Máximos		Mínimos	
Largura	<b>1,20 m</b>	Largura	<b>0,30 m</b>
Altura	<b>Según tejido</b>	Altura	<b>0,30 m</b>

# Modelos

## Sistema Avant

031500 Stor Glass Avant a muelle



### Componentes

Nº	Cód.	Descrição	Nº	Cód.	Descrição
1	031258	Gaveta perfil 39 mm XS	11	031247	Tampa do Cajon esquerda XS
2	031259	Contrapeso perfil tensionado XS	12	031248	Tampa Cajon direita XS
3	031262	Fixação Pletina XS	13	031249	Gaveta 39 mm quadro interior XS
4	031277	Cabo de posicionamento XS	14	031251	Clipe de fixação da janela XS
5	031278	Limitador de mola XS	15	031252	Alça para PLC20XS
6	031279	Tampão de contrapeso tensionado XS	16	031253	Fita de fixação da janela XS
7	031241	Perfil facil de ajuste 580 cm XS	17	031254	Tensor cordão sem pinça
8	031242	Junção canto XS	18	029203	Cordão plissado 0,80
9	031243	Tampa canto branco ABS XS	19	031256	Tubo enrollable alu. com fita dupla
10	031244	Tensão Shoe XS			

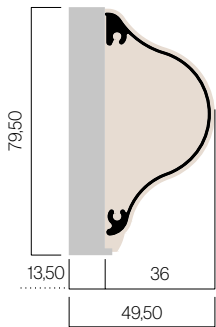
### Medidas de fabricação

Máximos		Mínimos	
Largura	<b>1,20 m</b>	Largura	<b>0,30 m</b>
Altura	<b>Según tejido</b>	Altura	<b>0,30 m</b>

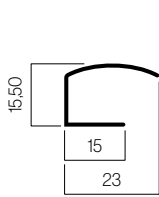
# Características técnicas

## Perfis

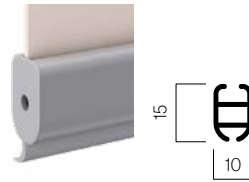
Gaveta pequena Extra



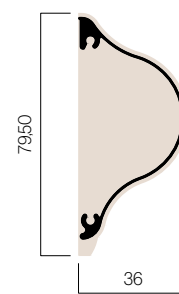
Guia Extra



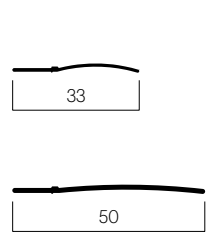
Terminal



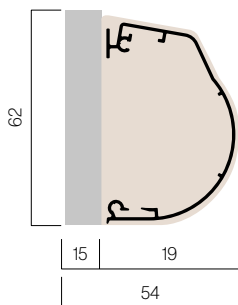
Gaveta pequena Intra



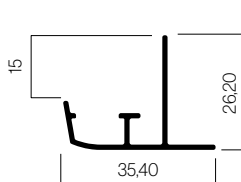
Guías Intra



Gaveta pequena Avant



Guia Avant

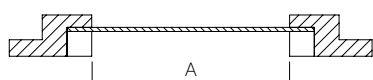


## Dimensão moldura sistema intra

### Moldura • Sistema Intra

Tirar as medidas A e B de acordo com o tipo de moldura. A diferença entre os dois nunca pode exceder as medidas indicadas na tabela de acordo com o modelo de guia.

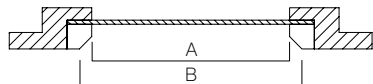
Reto 90°



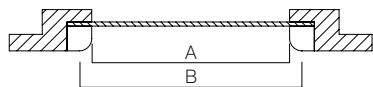
Guia 50  
B-A = 50 mm

Guia 33  
B-A = 25 mm

Inclinado



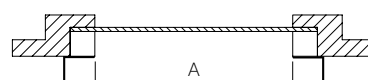
Redondo



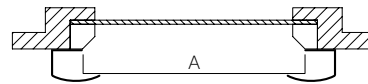
### Moldura • Sistema Extra

Para o fabrico, é essencial tirar sempre a medida A. Tenha em mente que o sistema Extra aumenta 28,50 mm de cada lado em relação à distância A.

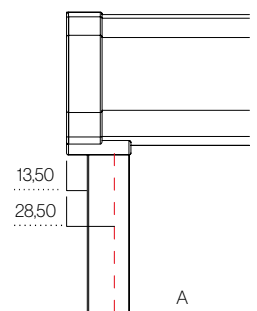
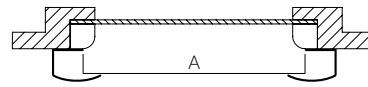
Reto 90°



Inclinado



Redondo

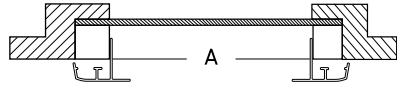


# Características técnicas

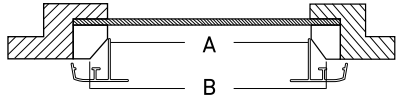
## Dimensão moldura sistema intra

### Moldura • Sistema Avant

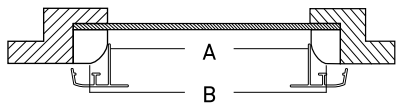
Reto 90°



Inclinado



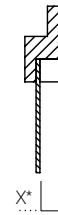
Redondo



### Profundidad del junquillo

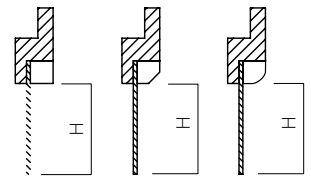
Apenas se tem em conta com o sistema Avant.

\*Para sistemas Avant, a profundidade deve ser igual ou superior a 15 mm.



### Altura moldura

A altura é medida de forma igual em ambos os sistemas



O seu mundo,  
o nosso universo.

FT. STORGLASS · PT · 03 · 1122