



saxun[®]



**Lonas para Sistemas de
Protección Solar**

Fabrics for Sun Protection Systems
Tissus pour Systèmes de Protection Solaire



saxun®

SELECCIÓN DE
TEJIDOS SAXUN
Estética al cuidado
de cada espacio.

Saxun presenta una nueva colección de lonas pensadas para crear nuevas configuraciones en la más extensa gama de sistemas de protección solar.

Con la garantía de los mejores proveedores, se pueden ofrecer las últimas tendencias en diseño con la garantía de un rendimiento óptimo.

Fabricadas con materiales de la más alta calidad, se adaptan a la perfección a todos los productos de Saxun.

SAXUN FABRIC
SELECTION
*Attractive protection
for any space.*

Saxun presents a new collection of canvases designed for creating new configurations for the most extensive range of solar protection systems.

Since we always use the very best suppliers, we can offer the latest design trends alongside a guarantee of optimum performance.

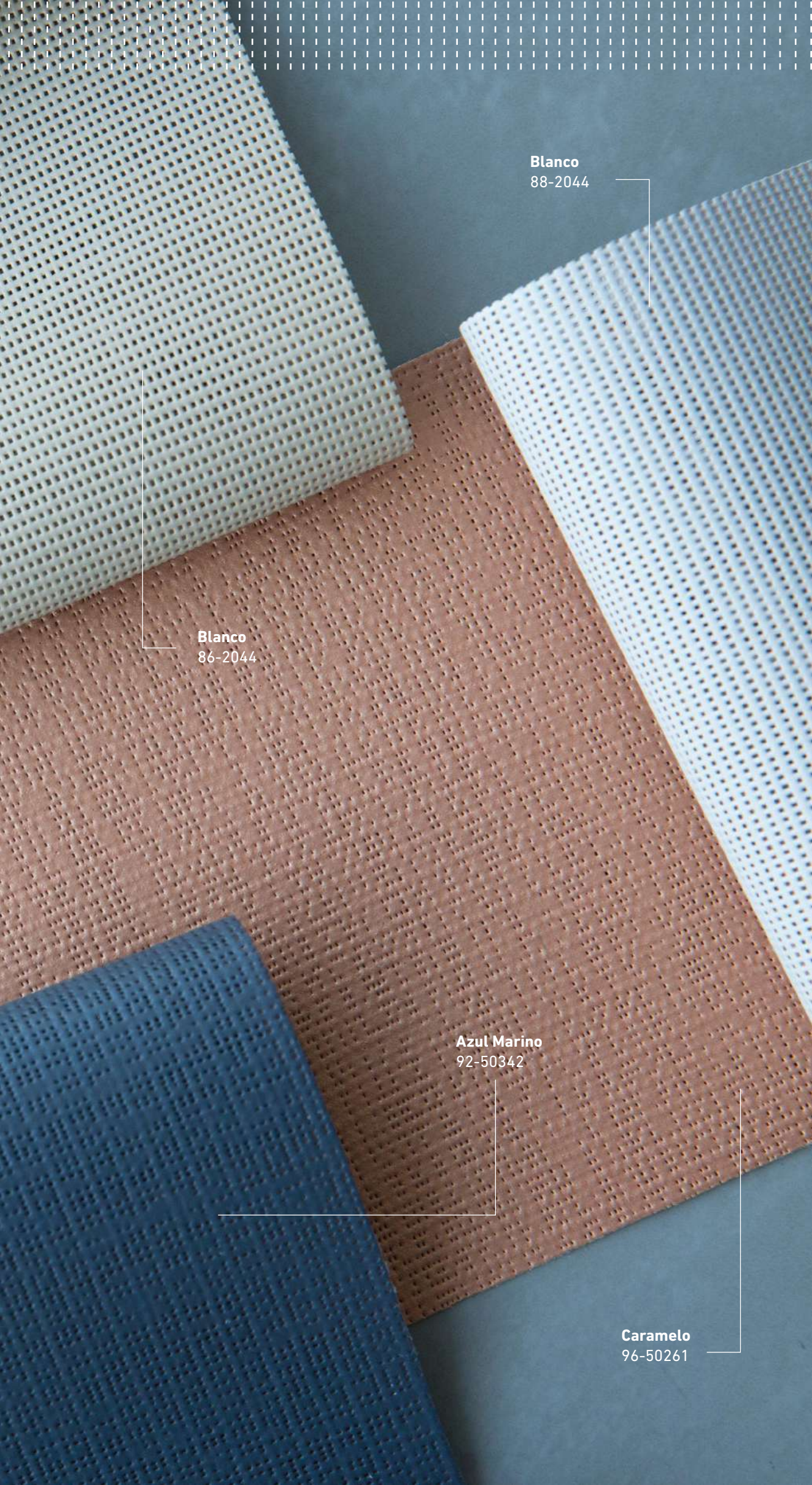
Made from the highest quality materials, they are perfectly adapted to work with all Saxun products.

SÉLECTION DE
TISSUS SAXUN
L'esthétique qui
prend soin de
chaque espace.

Saxun présente une nouvelle collection de toiles conçues pour créer de nouvelles configurations dans la gamme la plus étendue de systèmes de protection solaire.

Avec la garantie des meilleurs fournisseurs, les dernières tendances en matière de design peuvent être proposées avec l'assurance d'une performance optimale.

Fabriquées à partir de matériaux de la plus haute qualité, elles s'adaptent parfaitement à tous les produits Saxun.



Blanco
88-2044

Blanco
86-2044

Azul Marino
92-50342

Caramelo
96-50261

| | |
|--|----|
| ACRÍLICOS | 8 |
| <i>ACRYLICS / ACRYLIQUE</i> | |
| GÉNESIS | 10 |
| GREEN | 12 |
| LISOS | |
| <i>SMOOTH / LISSE</i> | |
| Saleda | 16 |
| Docril | 20 |
| LISTADOS | 21 |
| <i>FANTASY / AU TRAIT</i> | |
| Saleda | 22 |
| Docril | 44 |
| CLÁSICOS | 51 |
| <i>CLASSICS / CLASSIQUES</i> | |
| TÁNDEM | 56 |
| ESTAMPADOS | 58 |
| <i>PRINTS / IMPRESSIONS</i> | |
| SOLRAIN | 59 |
| FORCE | 60 |
| TOP FR | 61 |
| PVC | 62 |
| MONZA | 64 |
| VIP FR | 66 |
| SOLTIS | 68 |
| SOLTIS HORIZON 86 | 70 |
| SOLTIS HARMONY 88 | 71 |
| SOLTIS PERFORM 92 | 72 |
| SOLTIS LOUNGE 96 | 74 |
| SOLTIS OPAQUE 622 | 75 |
| SOLTIS PROOF 502 | 76 |
| SOLTIS OPAQUE B92 Y PROOF W96 | 78 |
| SOLTIS ELITE | 79 |
| GLOSARIO DE REFERENCIAS | 82 |
| <i>GLOSSARY OF REFERENCES / GLOSSAIRE DE REFERENCES</i> | |
| CARACTERÍSTICAS TÉCNICAS | 90 |
| <i>TECHNICAL CHARACTERISTICS / CARACTÉRISTIQUES TECHNIQUES</i> | |



APLICACIÓN EN EL ADN

Saxun es la firma de Giménez Ganga para satisfacer las necesidades más ambiciosas en materia de protección solar y decoración.

Crea sistemas vanguardistas desarrollados con los materiales más avanzados a nivel técnico con un solo objetivo: facilitar el trabajo de quienes día a día deben instalarlos.

Un trabajo basado en la filosofía I+D+A en la que la letra A es la inicial de Aplicación.

Porque la innovación solo tiene sentido cuando se busca la utilidad final para el cliente y la satisfacción del usuario.

APPLICATION IS IN OUR DNA

Giménez Ganga established the Saxun brand in order to satisfy the most ambitious solar protection and decorative needs.

It offers cutting edge systems developed with the most technically advanced materials, with one single objective: to facilitate the work of those who have to install them every day.

This work is based on the philosophy of R&D+A, where the letter A stands for Application.

Because innovation only makes sense if there is a constant focus on user satisfaction and the end use for the customer.

L'APPLICATION CONSTITUE NOTRE ADN

Saxun est la signature de Giménez Ganga pour satisfaire les besoins les plus ambitieux en matière de protection solaire et de décoration.

Nous créons des systèmes de pointe développés avec les matériaux les plus avancés au niveau technique dans un seul objectif: faciliter le travail de ceux qui, chaque jour, doivent les installer.

Un travail basé sur la philosophie R&D+A dans lequel la lettre A est l'initiale d'Application.

Parce que l'innovation n'a de sens que lorsque l'utilité finale pour le client et la satisfaction de l'utilisateur sont recherchées.



LA CONFIANZA DE UN LÍDER

En Saxun hemos contrastado la durabilidad de cada una de las lonas para probar su longevidad, resistiendo las inclemencias de la intemperie y manteniendo vivo su color durante muchos años.

THE CONFIDENCE OF A LEADER

At Saxun we test the durability of all canvases to ensure their longevity and to make sure that they are capable of resisting the elements and maintaining their colour for many years.

LA CONFIANCE D'UN LEADER

Chez Saxun, nous avons comparé la durabilité de chaque toile pour tester sa longévité, en résistant aux intempéries et en gardant sa couleur vive pendant de nombreuses années.



SENCILLEZ A LA HORA DE LIMPIAR

Su acabado específico repele el agua y la suciedad, haciéndolo muy fácil de limpiar y mantener año tras año.

Con una limpieza sencilla utilizando agua y jabón bastará para que el tejido quede como nuevo.

EASY CLEANING

Its unique finish repels water and dirt, making it very easy to clean and maintain year after year.

Simple cleaning with soap and water is enough to keep the canvas looking as good as new.

FACILITÉ DE NETTOYAGE

Sa finition spécifique repousse l'eau et la saleté, ce qui le rend très facile à nettoyer et à entretenir année après année.

Un simple nettoyage à l'eau et au savon suffit pour que le tissu ait l'air neuf.



UV40, UV60 y UV80

UV STANDARD 801

Esta certificación mide el Factor de Protección Ultravioleta con el que se especifica la capacidad de protección de los materiales textiles independientemente de su composición, tejido, estructura o color.

Las lonas textiles que Saxun ofrece en esta colección aportan la seguridad y tranquilidad de una protección total frente a la radiación UV.

UV STANDARD 801

This certification determines the Ultraviolet Protection Factor, which specifies the protection capacity of textile materials, regardless of their composition, fabric, structure or colour.

The textile canvases offered by Saxun in this collection provide the security and peace of mind of total UV protection.

UV STANDARD 801

Cette certification mesure le Facteur de Protection Ultraviolette qui précise la capacité de protection des matériaux textiles indépendamment de leur composition, tissu, structure ou couleur.

Les toiles textiles que Saxun propose dans cette collection offrent la sécurité et la sérénité d'une protection UV totale.



COLECCIÓN SAXUN: PROTECCIÓN A MEDIDA PARA CADA PROYECTO

Nuestra inagotable gama de lonas para protección solar está pensada para ofrecer soluciones cuando sea necesario disponer de la mejor protección tanto en espacios interiores como exteriores.

La variedad cromática y de diseño supone una auténtica solución decorativa para todo tipo de viviendas, llevando la protección solar a una dimensión hasta ahora desconocida: la de ser capaz de transmitir emociones entre quienes disfrutan del espacio al tiempo que se mantiene un confort visual incomparable.

Opciones 100% compatibles con los sistemas más avanzados del mercado. Opciones garantizadas por Saxun.

SAXUN COLLECTION: TAILOR-MADE PROTECTION FOR EVERY PROJECT

Our endless range of sun protection canvases is designed to offer solutions for when the best sun and heat protection is needed, for both indoor and outdoor spaces.

The variety of colours and designs provides an authentic decorative solution for all types of homes, taking solar protection to a new dimension that has never been explored before: the ability to create an emotional response from those who are enjoying the space while simultaneously maintaining incomparable visual comfort.

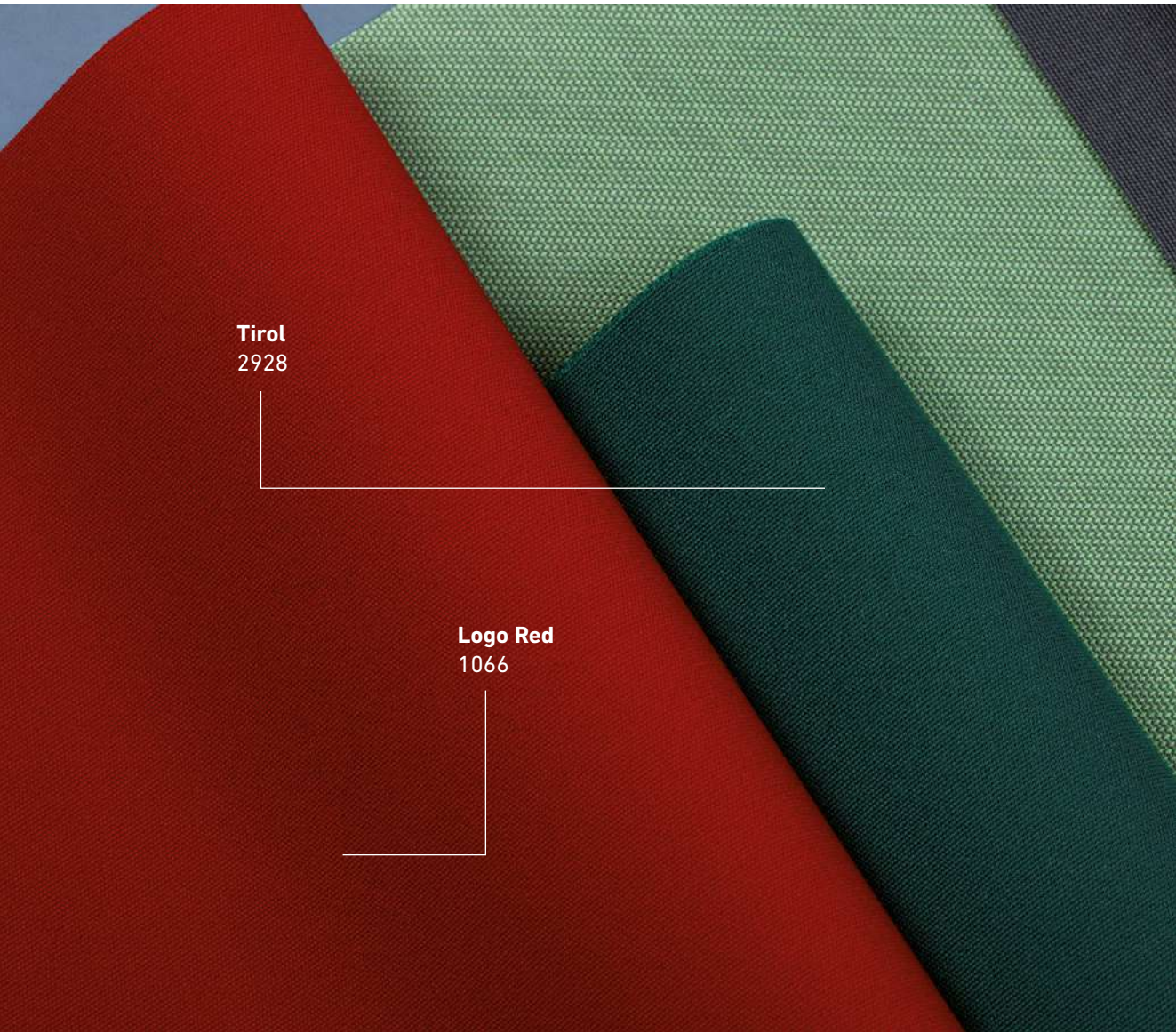
Options that are fully compatible with the most advanced protection systems on the market. Options guaranteed by Saxun.

COLLECTION SAXUN: UNE PROTECTION SUR MESURE POUR CHAQUE PROJET

Notre gamme inépuisable de toiles de protection solaire est conçue pour offrir des solutions lorsque la meilleure protection contre le soleil et la chaleur est nécessaire à l'intérieur comme à l'extérieur.

La variété des couleurs et du design est une véritable solution décorative pour tous les types d'habitations, en portant la protection solaire à une dimension jusqu'alors inconnue : celle de pouvoir transmettre des émotions à ceux qui apprécient l'espace tout en conservant un confort visuel incomparable.

Options 100% compatibles avec les systèmes de protection les plus avancés sur le marché. Options garanties par Saxun.



Tirol
2928

Logo Red
1066

ACRÍLICOS

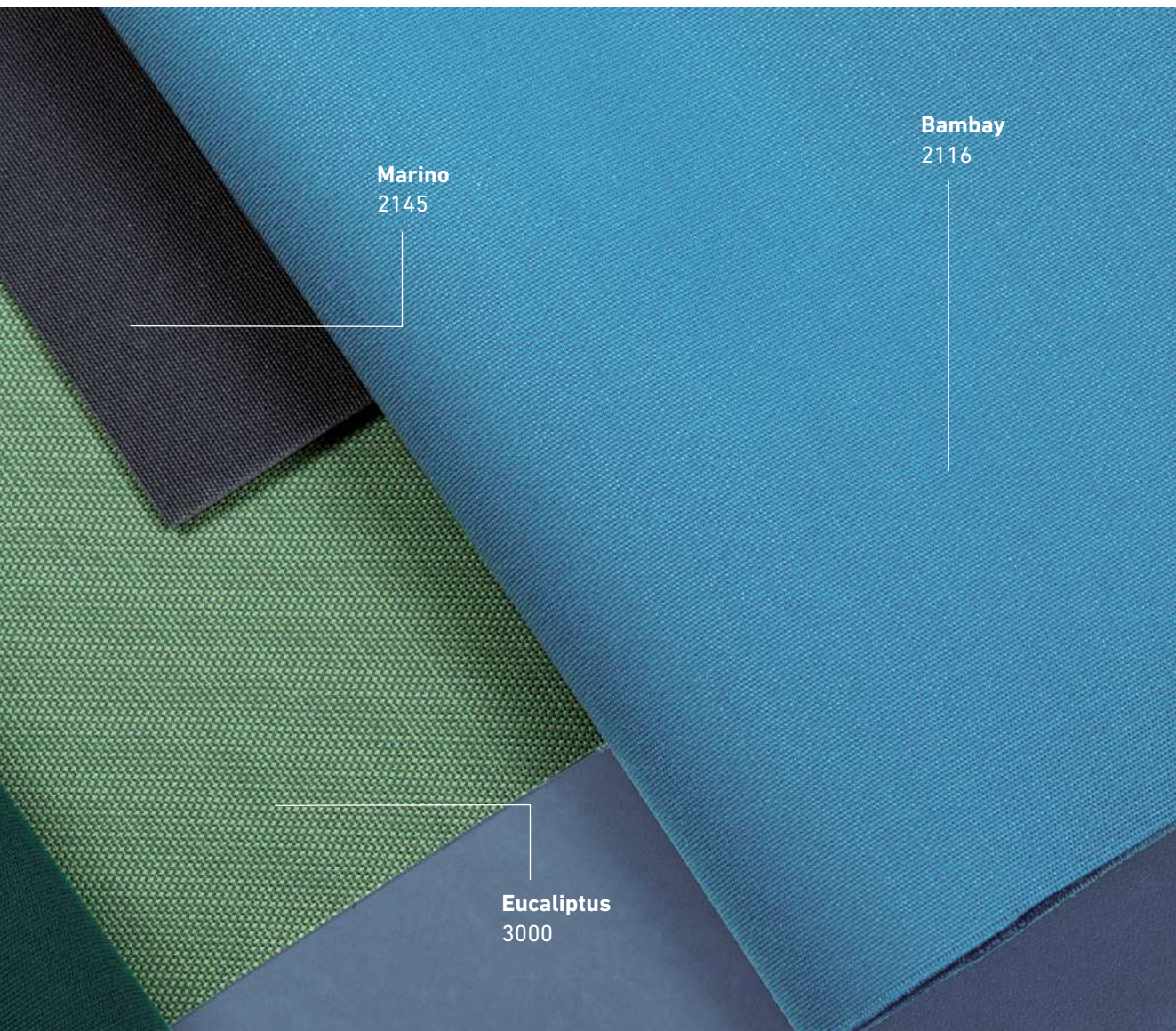
Acrylics / Acrylique

ULTIMAS TENDENCIAS PARA LOS PROFESIONALES MÁS CREATIVOS.

Las necesidades diarias de cada consumidor requieren soluciones de índole diversa adaptadas a cada uno de los productos.

Por ello nuestra gama de colores, texturas y diseños, pensados para garantizar el máximo confort, se adaptan a las necesidades de arquitectos e interioristas de todo el mundo.

El sistema de tintado en masa, asegura que el color se mantenga intacto a pesar del paso del tiempo y la estancia a la intemperie.



Marino
2145

Bambay
2116

Eucaliptus
3000

THE LATEST TRENDS FOR THE MOST CREATIVE PROFESSIONALS.

The daily requirements of each consumer require various different solutions adapted to each of the products.

That is why our range of colours, designs and textures, designed to guarantee maximum comfort, are adapted to the needs of architects and interior designers all over the world.

The mass pigmenting system ensures that the colour of the product remains intact despite the passage of time and its use outdoors.

DERNIÈRES TENDANCES POUR LES PROFESSIONNELS LES PLUS CRÉATIFS.

Les besoins quotidiens de chaque consommateur exigent des solutions différentes et adaptées à chacun des produits.

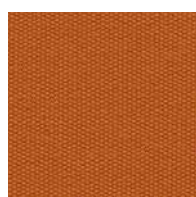
C'est pourquoi notre gamme de couleurs, de textures et de designs, conçus pour garantir un confort maximum, est adaptée aux besoins des architectes et des décorateurs d'intérieur du monde entier.

Le système de teinture dans la masse assure que la couleur reste intacte malgré le temps qui passe et l'exposition aux intempéries.

Génesis

La última generación de tejidos de Saxun se inspira en la naturaleza para reivindicar la protección más efectiva.

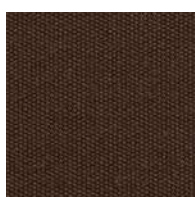
Aquella que nos devuelve a los orígenes y garantiza el bienestar de los usuarios.



Apricot

1480

120 cm / UV 80



Chocolat

1481

120 cm / UV 80



Lima

1482

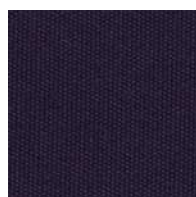
120 cm / UV 80



Tropic

1489

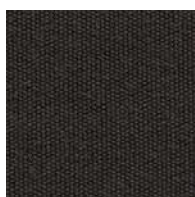
120 cm / UV 80



Commodore

1079

120 cm / UV 80



Carbón

1060

120 cm / UV 80



Shell

1469

120 cm / UV 40



Alamo

1472

120 cm / UV 80



The latest generation of Saxun fabrics is inspired by nature, and provides the most effective protection.

It takes us back to our origins and guarantees the well-being of users.

La dernière génération de tissus de Saxun s'inspire de la nature pour assurer la protection la plus efficace.

Celle qui nous ramène aux origines et garantit le bien-être des utilisateurs.



Toast
1470
120 cm / UV 60



Cereal
1468
120 cm / UV 60



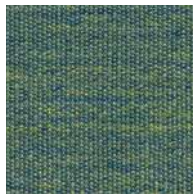
Generation Red
1473
120 cm / UV 60



Berry
1488
120 cm / UV 80



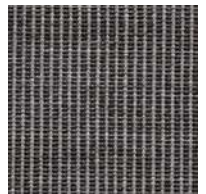
Ocean
1479
120 cm / UV 80



Lagoon
1063
120 cm / UV 60



Cactus
1471
120 cm / UV 60



Tweed Perla
1467
120 cm / UV 80





GREEN

by  **Sauleda** & 

La revolución de los espacios saludables.

Este tejido recubierto por un innovador acabado que reacciona a la incidencia de los rayos UVA, promueve un proceso químico que purifica y oxigena el aire, absorbiendo dióxido de carbono y transformándolo en oxígeno.

Una fórmula para cuidar el medio ambiente más próximo y eliminar todo tipo de olores desagradables.

The revolution of healthy spaces.

This fabric, coated with an innovative finish that reacts to UVA rays, facilitates a chemical process that purifies and oxygenates the air, by absorbing carbon dioxide and transforming it into oxygen.

A formula for taking care of the immediate environment and eliminating all kinds of unpleasant odours.

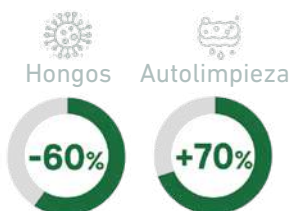
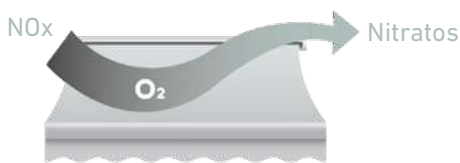
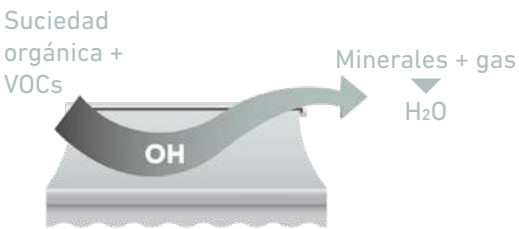
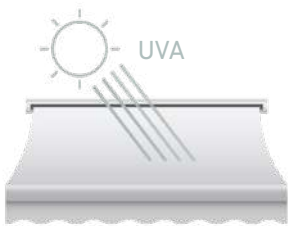
La révolution des espaces sains.

Ce tissu, recouvert d'une finition innovante qui réagit à l'incidence des rayons UVA, favorise un processus chimique qui purifie et oxygène l'air, en absorbant le dioxyde de carbone et en le transformant en oxygène.

Une formule pour prendre soin de l'environnement de plus près et éliminer toutes sortes d'odeurs désagréables.

EL PRIMER TEJIDO QUE PURIFICA EL AIRE

¿Cómo funciona?



THE FIRST EVER FABRIC THAT PURIFIES THE AIR

How does it work?

LE PREMIER TISSU PURIFICATEUR D'AIR

Comment ça marche?

GREEN es un tejido recubierto de nanopartículas de dióxido de titanio (TiO₂).

GREEN is a fabric that is coated with nanoparticles of titanium dioxide (TiO₂).

GREEN est un tissu recouvert de nanoparticules de dioxyde de titane (TiO₂).

Los rayos UVA golpean sobre el tejido GREEN y comienza un proceso químico que convierte el oxígeno y vapor de agua de la atmósfera en **agentes limpiadores OH y O₂**.

*UVA rays hit the GREEN fabric, triggering a chemical process that converts atmospheric oxygen and water vapour into **OH and O₂ cleaning agents**.*

Les rayons UVA frappent le tissu GREEN et un processus chimique commence, convertissant l'oxygène et la vapeur d'eau de l'atmosphère en **OH et O₂, des agents nettoyants**.

El OH convierte la suciedad orgánica y los compuestos orgánicos volátiles en mineral y gas y vuelve a H₂O.

OH converts organic dirt and volatile organic compounds into minerals and gas and then converts back to H₂O.

OH convertit les saletés organiques et les composés organiques volatils en minéraux et en gaz et redevient H₂O.

El OH reduce el óxido de nitrógeno (NO_x), uno de los gases más dañinos presente, a nitratos relativamente inocuos.

OH reduces nitrogen oxide (NO_x), one of the most harmful gases in the atmosphere, to relatively harmless nitrates.

OH réduit l'oxyde d'azote (NO_x), un des gaz les plus nocifs présents, en nitrates relativement inoffensifs.

Este proceso se repite para limpiar la superficie y el aire, reduciendo los niveles de dióxido de nitrógeno en torno a un 55% en pruebas de laboratorio.

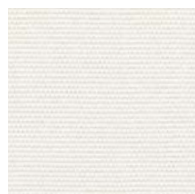
This process is repeated in order to clean the surface and the air, reducing nitrogen dioxide levels by about 55% in laboratory tests.

Ce processus est répété pour nettoyer la surface et l'air, ce qui permet de réduire les niveaux de dioxyde d'azote d'environ 55 % lors des tests en laboratoire.

Produce una reducción aproximada de los hongos de un 60% y tiene un efecto autolimpiante de en torno al 70%.

It reduces the presence of fungi by approximately 60% and has a self-cleaning effect of about 70%.

Il réduit approximativement les champignons de 60% et a un effet autonettoyant d'environ 70%.



Blanco
1530
120 cm



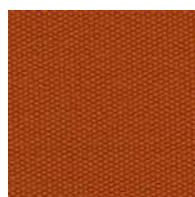
Marfil
1531
120 cm



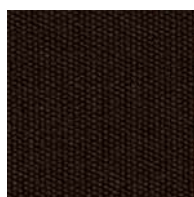
Avena
1532
120 cm



Siroco
1533
120 cm



Apricot
1534
120 cm



Chocolate
1535
120 cm



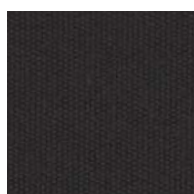
Toast
1536
120 cm



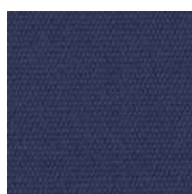
Cactus
1537
120 cm



Shell
1538
120 cm



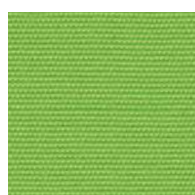
Carbón
1539
120 cm



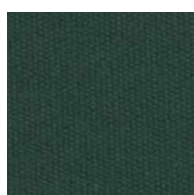
Marino
1540
120 cm



Ocean
1541
120 cm



Anís
1542
120 cm



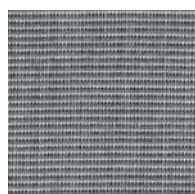
Botella
1543
120 cm



Amarillo
1544
120 cm



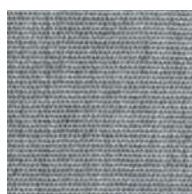
Brasserie
1545
120 cm



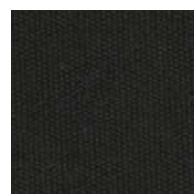
Gris
1546
120 cm



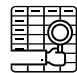
Perla
1547
120 cm



Piedra
1548
120 cm



Negro
1549
120 cm


Características técnicas en la página 90
Technical characteristics on page 90
 Caractéristiques techniques à la page 90

Lisos

Smooth / Lisse

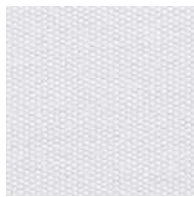
Nuevos colores para la mejor sombra.

New colours for the best shade.

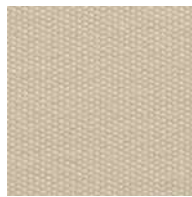
De nouvelles couleurs pour une meilleure protection du soleil.



Optik
1069
120 cm / UV 40



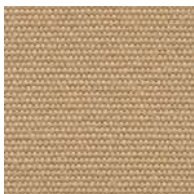
Blanco
2042
120 cm / UV 40



Natural
2926
120 cm / UV 40



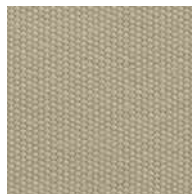
Vainilla
2687
120 cm / UV 40



Crema
2322
120 cm / UV 40



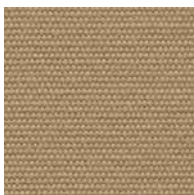
Caramel
2022
120 cm / UV 60



Seda
2596
120 cm / UV 60



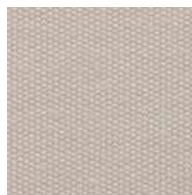
Champagne
2826
120 cm / UV 60



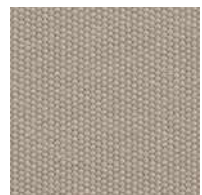
Alabastro
8157
120 cm / UV 40



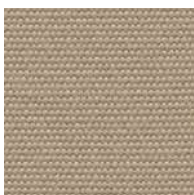
Arena
2274
120 cm / UV 60



Marfil
2143
120 cm / UV 40



Mármol
1070
120 cm / UV 60



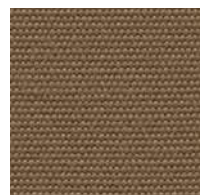
Avena
2296
120 cm / UV 40



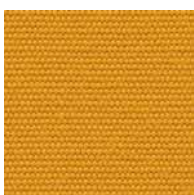
Beige
2038
120 cm / UV 80



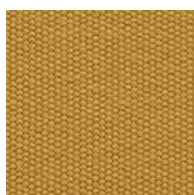
Toffee
2834
120 cm / UV 80



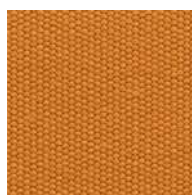
Visión
2250
120 cm / UV 80



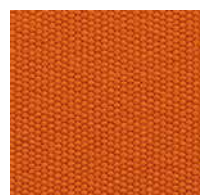
Mostaza
2837
120 cm / UV 80



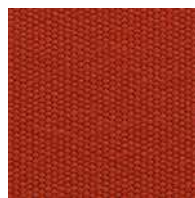
Maíz
2141
120 cm / UV 80



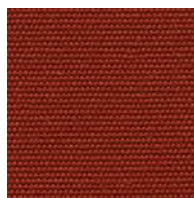
Ocre
2180
120 cm / UV 80



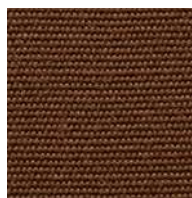
Azafrán
2825
120 cm / UV 80



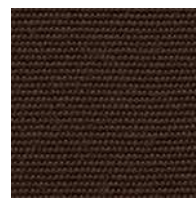
Teja
2065
120 cm / UV 80



Terracota
8645
120 cm / UV 80



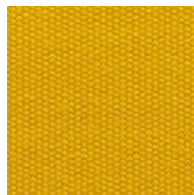
Marrón
2146
120 cm / UV 80



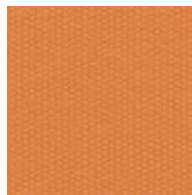
Café
2316
120 cm / UV 80



Limón
2829
120 cm / UV 80



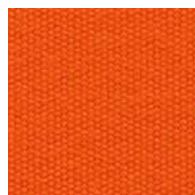
Amarillo
2013
120 cm / UV 80



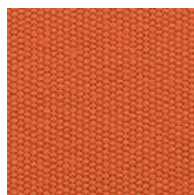
Melocotón
2830
120 cm / UV 60



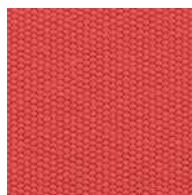
Mandarina
2142
120 cm / UV 80



Naranja
2050
120 cm / UV 80



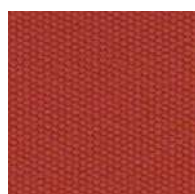
Salmón
2221
120 cm / UV 40



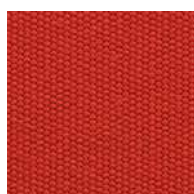
Tomato
2836
120 cm / UV 80



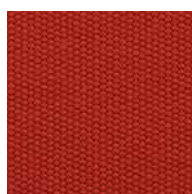
Rojo
2211
120 cm / UV 80



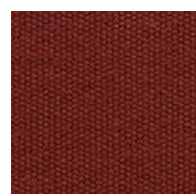
Logo Red
1066
120 cm / UV 80



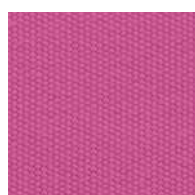
Rioja
2210
120 cm / UV 80



Brasserie
2209
120 cm / UV 80



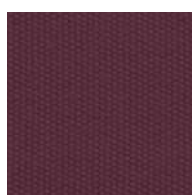
Granate
2101
120 cm / UV 80



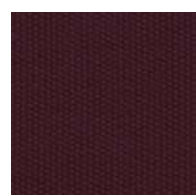
Pink
2835
120 cm / UV 80



Grape
1067
120 cm / UV 60



Malva
2119
120 cm / UV 80



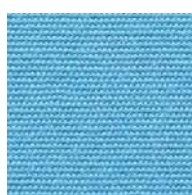
Púrpura
2833
120 cm / UV 80



Lila
2118
120 cm / UV 80



Turkis
2129
120 cm / UV 80



Celeste
2066
120 cm / UV 80



Bombay
2116
120 cm / UV 80



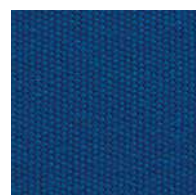
Lavanda
8785
120 cm / UV 80



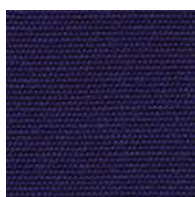
Índigo
2828
120 cm / UV 80



Brisa
2777
120 cm / UV 80



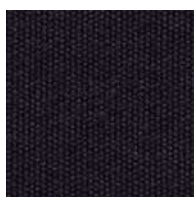
Azul Real
2235
120 cm / UV 80



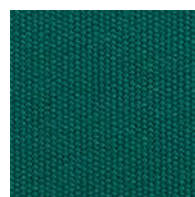
Azul
2018
120 cm / UV 80



Marino
2145
120 cm / UV 80



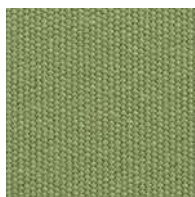
Admiral
2051
120 cm / UV 80



Jade
2892
120 cm / UV 80



Acquamarina
2427
120 cm / UV 80



Oliva
2832
120 cm / UV 80



Fresh
2097
120 cm / UV 80



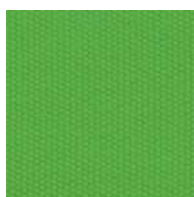
Musgo
2247
120 cm / UV 80



Tirol
2928
120 cm / UV 80



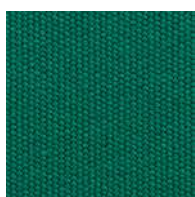
Verde Claro
2246
120 cm / UV 80



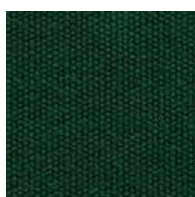
Anís
2024
120 cm / UV 60



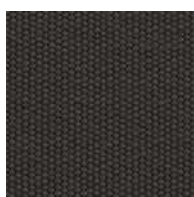
Confetti
2025
120 cm / UV 80



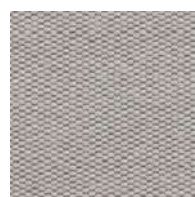
Verde
2242
120 cm / UV 80



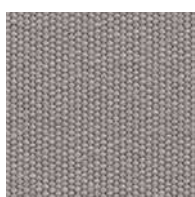
Botella
2245
120 cm / UV 80



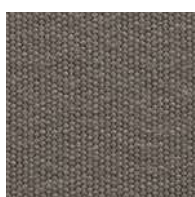
Racing
2839
120 cm / UV 80



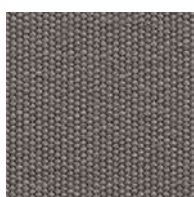
Silver
2821
120 cm / UV 40



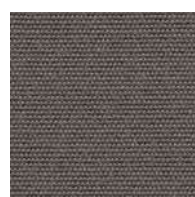
Perla
2979
120 cm / UV 40



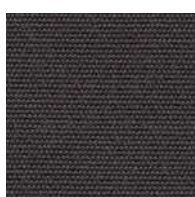
Gris
2102
120 cm / UV 80



Mineral
2831
120 cm / UV 80



Basalto
2327
120 cm / UV 80



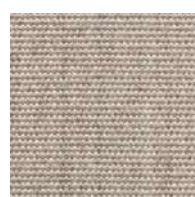
Antracita
8488
120 cm / UV 80



Negro
2170
120 cm / UV 80



Zurich
2255
120 cm / UV 40



Sand
1071
120 cm / UV 60



Lugano
2134
120 cm / UV 40



Berna
2041
120 cm / UV 40



Hormigón
1072
120 cm / UV 60



Gobi
3603
120 cm / UV 60



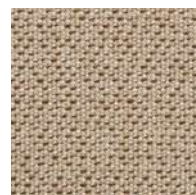
Tenere
2354
120 cm / UV 60



Rain
1073
120 cm / UV 80



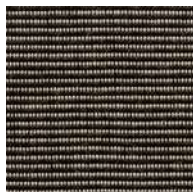
Integral
2838
120 cm / UV 80



Siroco
2226
120 cm / UV 60



Trigo
1074
120 cm / UV 60



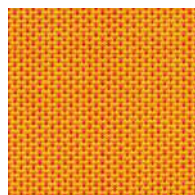
Tweed Avena
3580
120 cm / UV 80



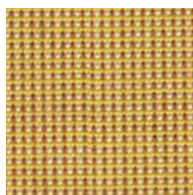
Coco
3601
120 cm / UV 80



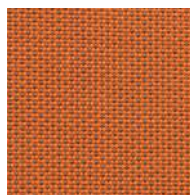
Trufa
3003
120 cm / UV 80



Dallas
2083
120 cm / UV 80



Bronce
2090
120 cm / UV 80



Miel
3001
120 cm / UV 80



Oro
2688
120 cm / UV 80



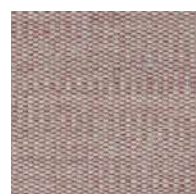
Cobre
2690
120 cm / UV 80



Splendore
2691
120 cm / UV 80



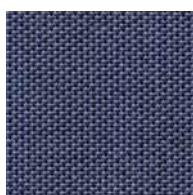
Cherry
1065
120 cm / UV 60



Lava
1076
120 cm / UV 80



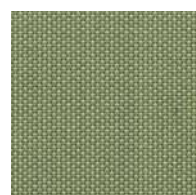
Tweed Rojo
3583
120 cm / UV 80



Regata
3002
120 cm / UV 80



Bambú
1075
120 cm / UV 60



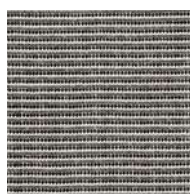
Eucaliptus
3000
120 cm / UV 80



Tweed Verde
8573
120 cm / UV 80



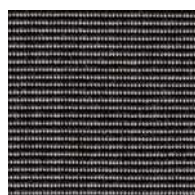
Piedra
3605
120 cm / UV 80



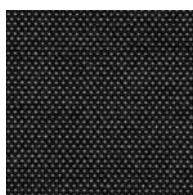
Tweed Gris Claro
3581
120 cm / UV 80



Grafito
3602
120 cm / UV 80



Tweed Negro
3582
120 cm / UV 80



Coal
1068
120 cm / UV 80



**Docril
080**
120 cm / UV 80



**Docril
002**
120 cm / UV 80



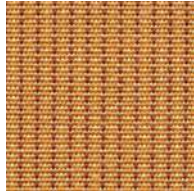
**Docril
037**
120 cm / UV 80



**Docril
086**
120 cm / UV 80



**Docril
113**
120 cm / UV 80



**Docril
101**
120 cm / UV 80



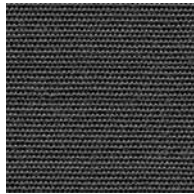
**Docril
060**
120 cm / UV 80



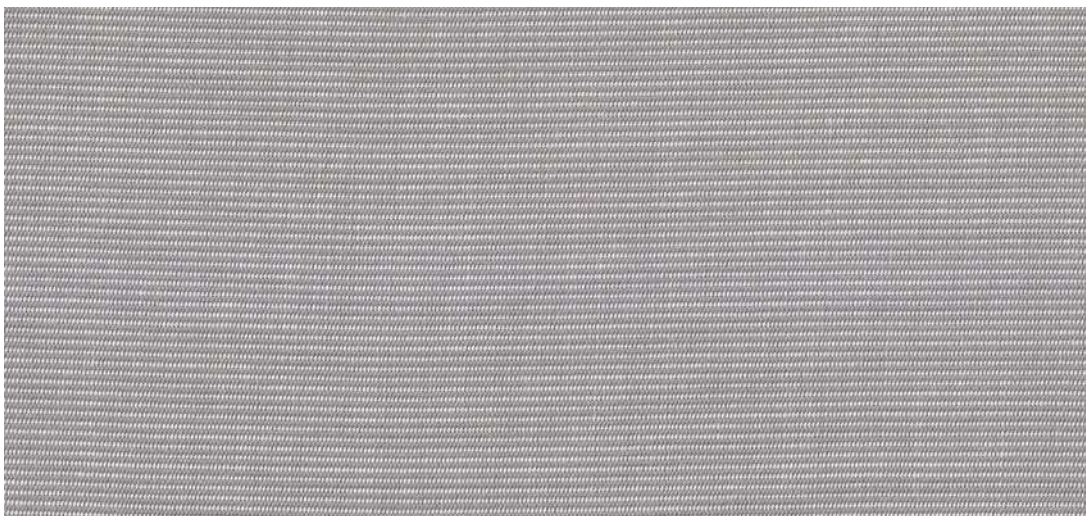
**Docril
197**
120 cm / UV 80



**Docril
067**
120 cm / UV 80



**Docril
098**
120 cm / UV 80



Docril 675 120 cm / UV 80



Características técnicas en la página 90
Technical characteristics on page 90
Caractéristiques techniques à la page 90



LISTADOS

Fantasy / Au trait

Combinaciones clásicas o atrevidas.

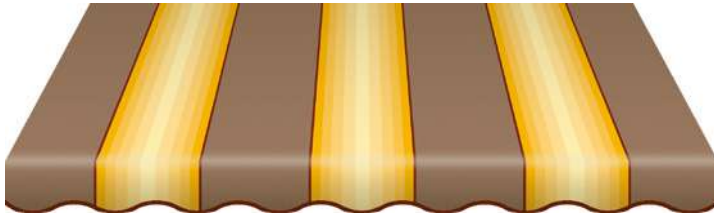
Dan como resultado unas tonalidades espectaculares que se mezclan con diseños clásicos donde moda y estilo se unen para crear un muestrario único. Las posibilidades son prácticamente infinitas.

Classic or daring combinations.

Producing spectacular colour shades blended with classic designs, where fashion and style come together to create a unique showcase. The possibilities are practically endless.

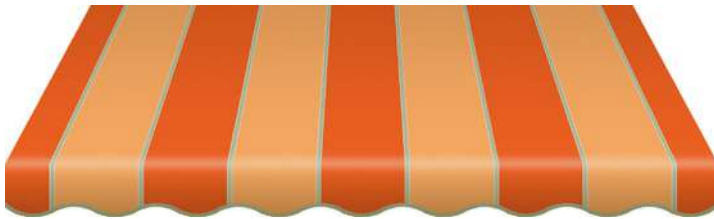
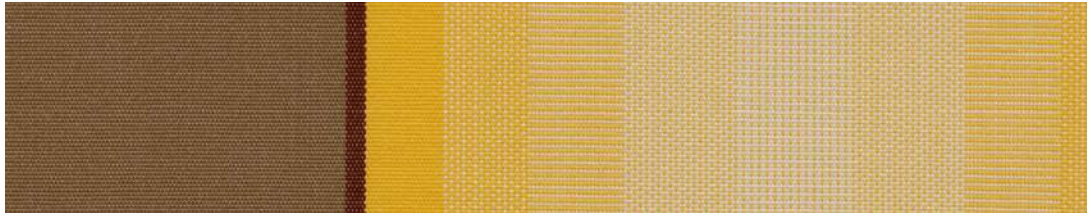
Combinaisons classiques ou audacieuses.

Elles donnent des teintes spectaculaires qui se fondent dans des designs classiques où la mode et le style se rejoignent pour créer un échantillonnage unique. Les possibilités sont presque infinies.



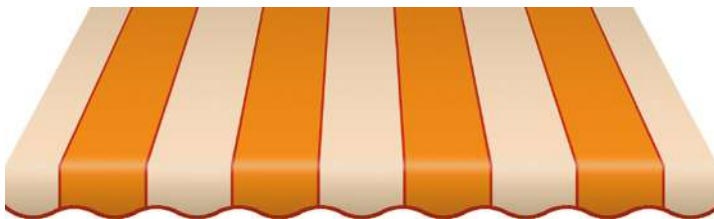
Asia
3015

| | | | |
|----------------|--------|------------|--------|
| Rapport | Repeat | Repetition | 29 cm |
| Ancho | Width | Largeur | 120 cm |
| UV 60 | | | |



San Francisco
2806

| | | | |
|----------------|--------|------------|--------|
| Rapport | Repeat | Repetition | 30 cm |
| Ancho | Width | Largeur | 120 cm |
| UV 60 | | | |



Nebraska
2561

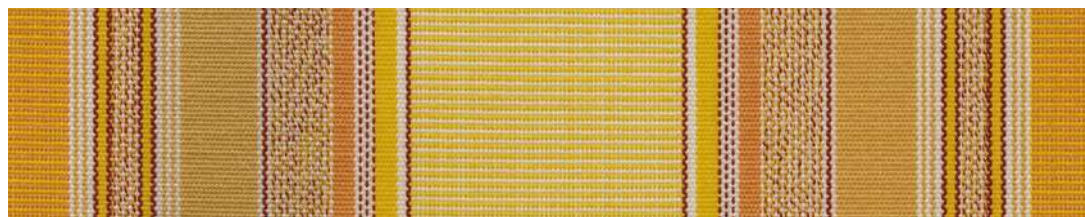
| | | | |
|----------------|--------|------------|--------|
| Rapport | Repeat | Repetition | 29 cm |
| Ancho | Width | Largeur | 120 cm |
| UV 60 | | | |



Arizona
2005

| | | | |
|----------------|--------|------------|--------|
| Rapport | Repeat | Repetition | 30 cm |
| Ancho | Width | Largeur | 120 cm |
| UV 60 | | | |





Tauro

2573

Rapport Repeat Repetition 24 cm

Ancho Width Largeur 120 cm

UV 60



Néctar

2820

Rapport Repeat Repetition 30 cm

Ancho Width Largeur 120 cm

UV 60



Vesubio

2636

Rapport Repeat Repetition 23 cm

Ancho Width Largeur 120 cm

UV 60



Teide

2228

Rapport Repeat Repetition 24 cm

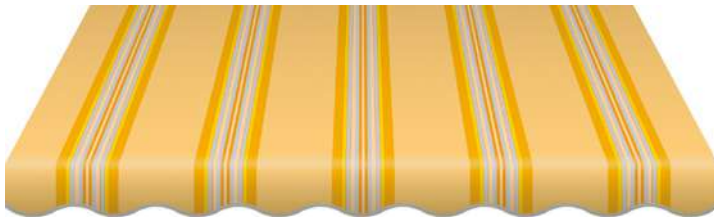
Ancho Width Largeur 120 cm

UV 60



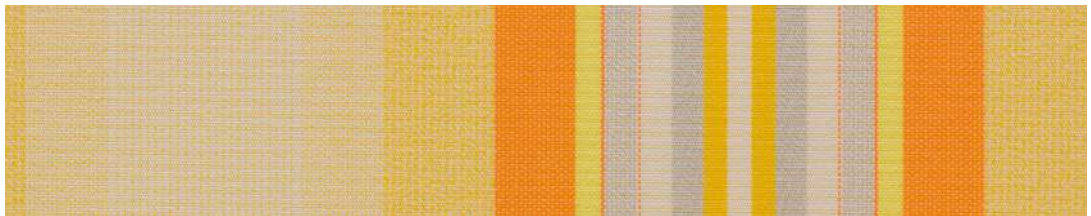
Tajo
2230

| | | | |
|----------------|--------|------------|--------|
| Rapport | Repeat | Repetition | 30 cm |
| Ancho | Width | Largeur | 120 cm |
| UV 60 | | | |



York
2930

| | | | |
|----------------|--------|------------|--------|
| Rapport | Repeat | Repetition | 24 cm |
| Ancho | Width | Largeur | 120 cm |
| UV 60 | | | |



Sol
2126

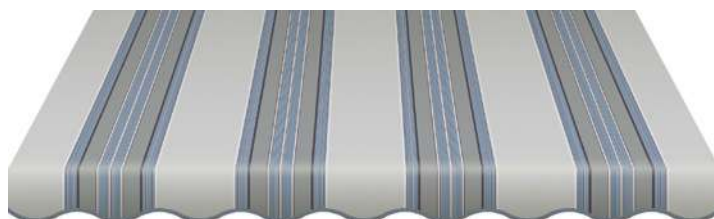
| | | | |
|----------------|--------|------------|--------|
| Rapport | Repeat | Repetition | 24 cm |
| Ancho | Width | Largeur | 120 cm |
| UV 60 | | | |



México
2151

| | | | |
|----------------|--------|------------|--------|
| Rapport | Repeat | Repetition | 24 cm |
| Ancho | Width | Largeur | 120 cm |
| UV 60 | | | |





Galaxy

3020

Rapport Repeat Repetition 24 cm

Ancho Width Largeur 120 cm

UV 60



Tahiti

2565

Rapport Repeat Repetition 24 cm

Ancho Width Largeur 120 cm

UV 60



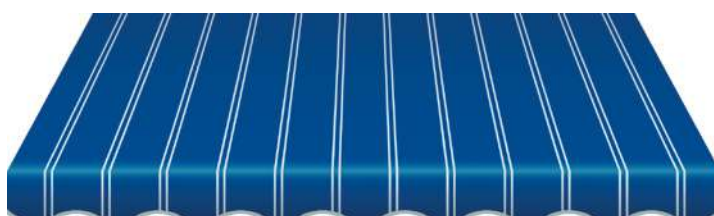
Alaska

2023

Rapport Repeat Repetition 30 cm

Ancho Width Largeur 120 cm

UV 80



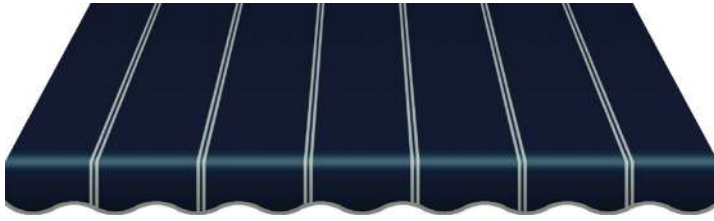
Viena

2251

Rapport Repeat Repetition 10 cm

Ancho Width Largeur 120 cm

UV 80



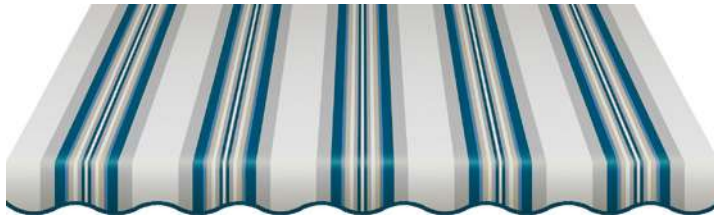
Helsinki

2817

Rapport Repeat Repetition 13 cm

Ancho Width Largeur 120 cm

UV 80



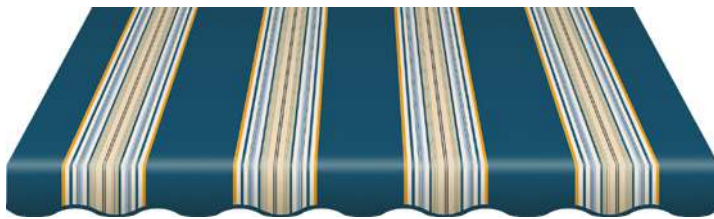
Balmoral

2921

Rapport Repeat Repetition 24 cm

Ancho Width Largeur 120 cm

UV 60



Miami

2702

Rapport Repeat Repetition 30 cm

Ancho Width Largeur 120 cm

UV 60



Praga

2205

Rapport Repeat Repetition 24 cm

Ancho Width Largeur 120 cm

UV 60





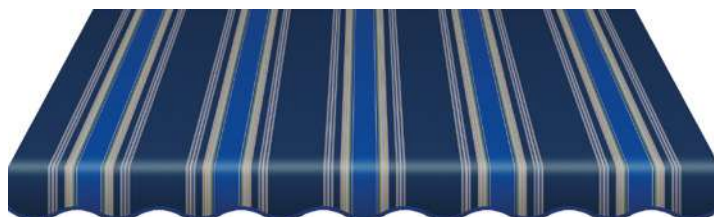
Veleta

2676

Rapport Repeat Repetition 24 cm

Ancho Width Largeur 120 cm

UV 60



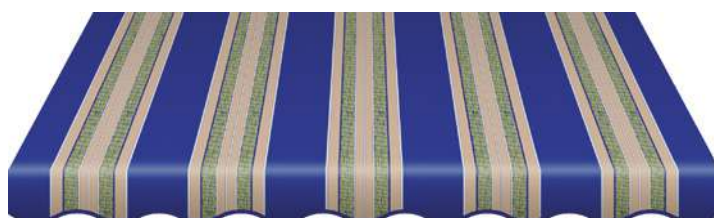
Piscis

2574

Rapport Repeat Repetition 24 cm

Ancho Width Largeur 120 cm

UV 80



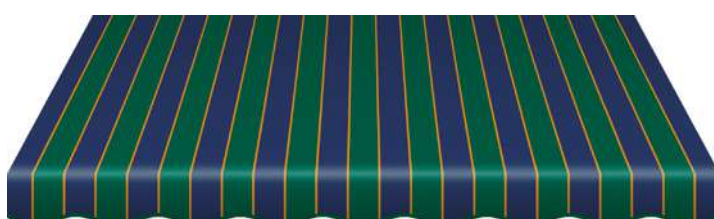
Venus

2659

Rapport Repeat Repetition 24 cm

Ancho Width Largeur 120 cm

UV 60



Capri

2063

Rapport Repeat Repetition 11 cm

Ancho Width Largeur 120 cm

UV 80



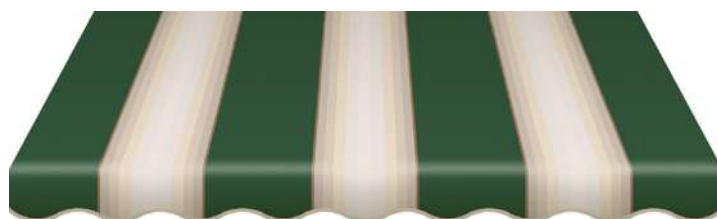
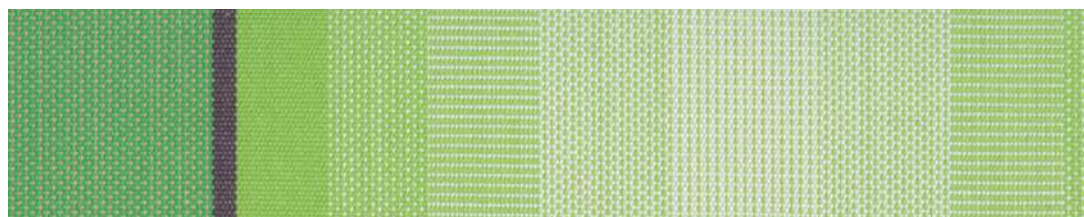
Europa

3016

Rapport Repeat Repetition 29 cm

Ancho Width Largeur 120 cm

UV 60



África

3012

Rapport Repeat Repetition 29 cm

Ancho Width Largeur 120 cm

UV 80



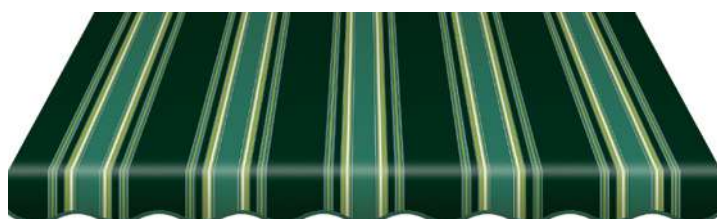
Alabama

2562

Rapport Repeat Repetition 29 cm

Ancho Width Largeur 120 cm

UV 60



Aries

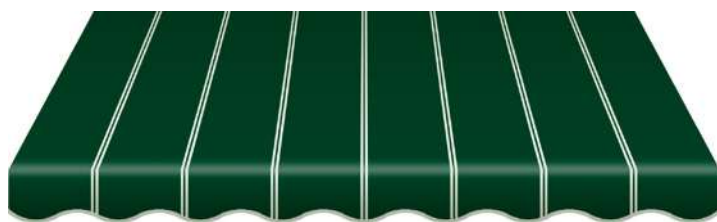
2576

Rapport Repeat Repetition 24 cm

Ancho Width Largeur 120 cm

UV 80





Estocolmo

2816

Rapport Repeat Repetition 13 cm

Ancho Width Largeur 120 cm

UV 80



Stuttgart

2571

Rapport Repeat Repetition 30 cm

Ancho Width Largeur 120 cm

UV 60



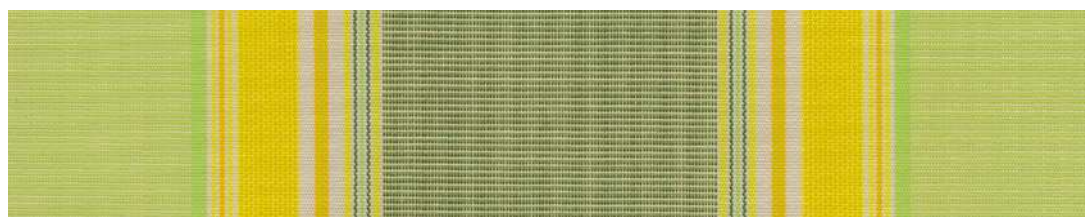
Orlando

2191

Rapport Repeat Repetition 30 cm

Ancho Width Largeur 120 cm

UV 60



Curaçao

2564

Rapport Repeat Repetition 24 cm

Ancho Width Largeur 120 cm

UV 60



Parma

2207

Rapport Repeat Repetition 24 cm

Ancho Width Largeur 120 cm

UV 60



Plutón

2179

Rapport Repeat Repetition 24 cm

Ancho Width Largeur 120 cm

UV 60



Windsor

2929

Rapport Repeat Repetition 24 cm

Ancho Width Largeur 120 cm

UV 60



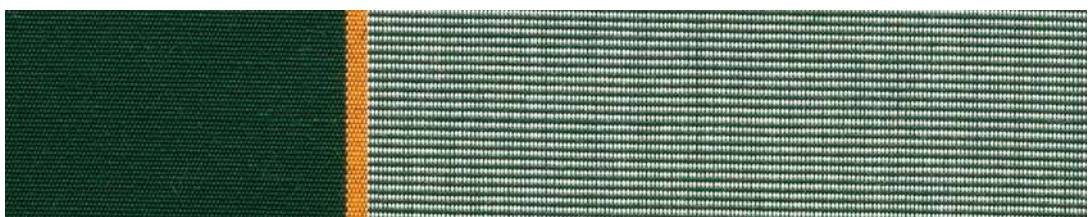
Canadá

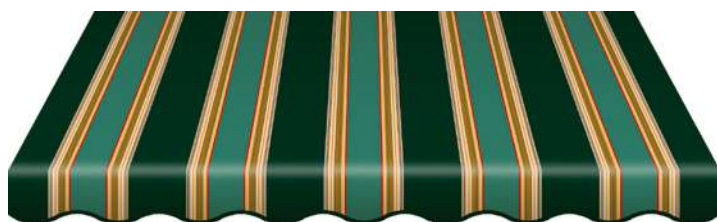
2061

Rapport Repeat Repetition 30 cm

Ancho Width Largeur 120 cm

UV 80





Samoa

2567

Rapport Repeat Repetition 24 cm

Ancho Width Largeur 120 cm

UV 80



Ítaca

2581

Rapport Repeat Repetition 24 cm

Ancho Width Largeur 120 cm

UV 80



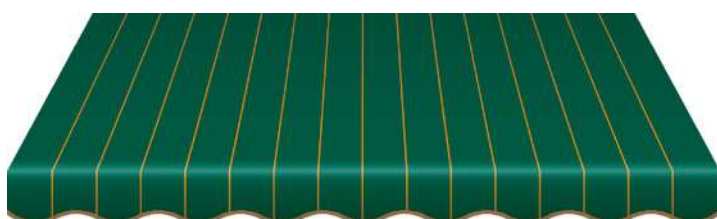
Aneto

2012

Rapport Repeat Repetition 24 cm

Ancho Width Largeur 120 cm

UV 80



Támesis

2231

Rapport Repeat Repetition 8 cm

Ancho Width Largeur 120 cm

UV 80



Acuario 2807

Rapport Repeat Repetition 29 cm

Ancho Width Largeur 120 cm

UV 60

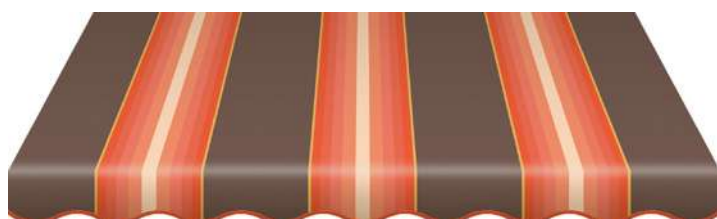
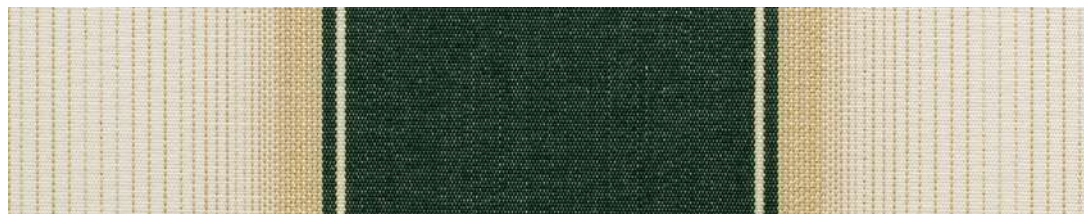


Carnaval 2960

Rapport Repeat Repetition 20 cm

Ancho Width Largeur 120 cm

UV 60



América 3013

Rapport Repeat Repetition 30 cm

Ancho Width Largeur 120 cm

UV 80



Oceanía 3017

Rapport Repeat Repetition 30 cm

Ancho Width Largeur 120 cm

UV 80





Cosmos

3019

Rapport Repeat Repetition 23 cm

Ancho Width Largeur 120 cm

UV 60



Marte

2121

Rapport Repeat Repetition 24 cm

Ancho Width Largeur 120 cm

UV 80



Alsacia

2031

Rapport Repeat Repetition 30 cm

Ancho Width Largeur 120 cm

UV 80



Oslo

2818

Rapport Repeat Repetition 13 cm

Ancho Width Largeur 120 cm

UV 80



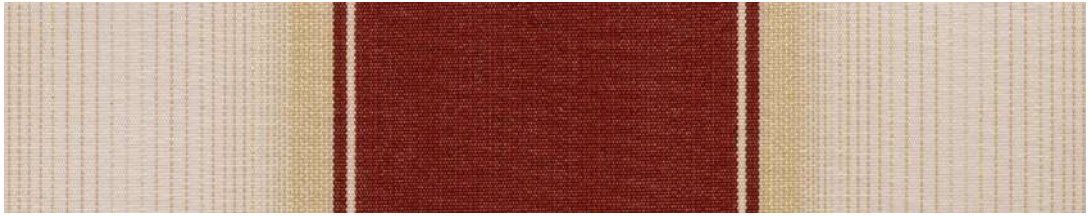
Patum

2962

Rapport Repeat Repetition 17 cm

Ancho Width Largeur 120 cm

UV 60



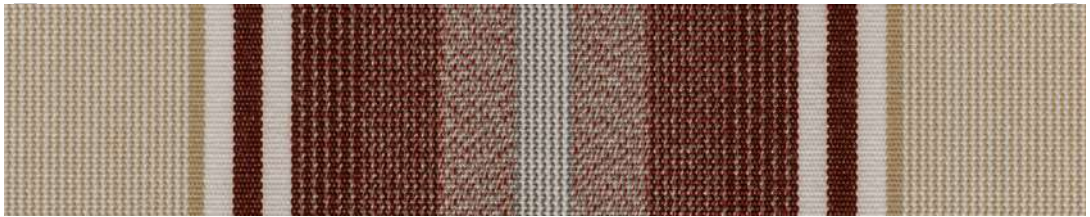
Sienna

2223

Rapport Repeat Repetition 24 cm

Ancho Width Largeur 120 cm

UV 60



Moncayo

2168

Rapport Repeat Repetition 24 cm

Ancho Width Largeur 120 cm

UV 60



Géminis

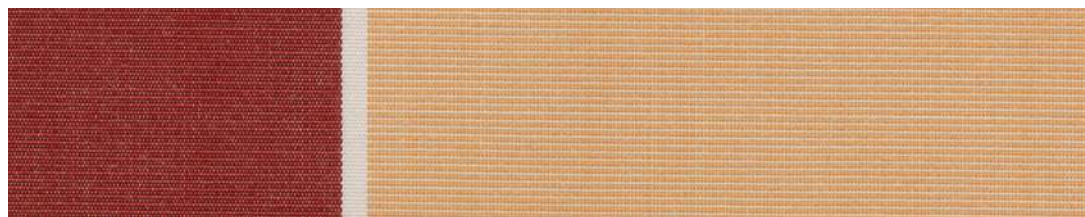
2808

Rapport Repeat Repetition 29 cm

Ancho Width Largeur 120 cm

UV 60





Georgia

2563

Rapport Repeat Repetition 30 cm

Ancho Width Largeur 120 cm

UV 80



Río

2966

Rapport Repeat Repetition 30 cm

Ancho Width Largeur 120 cm

UV 60



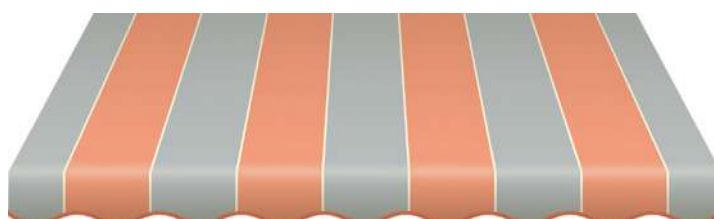
Everest

2125

Rapport Repeat Repetition 24 cm

Ancho Width Largeur 120 cm

UV 40



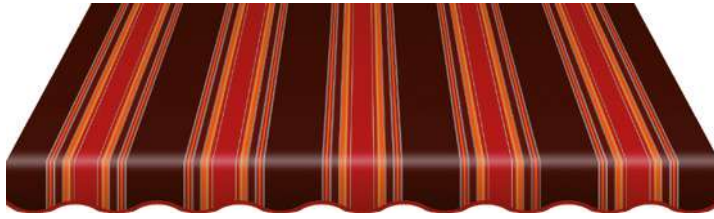
Topacio

2233

Rapport Repeat Repetition 30 cm

Ancho Width Largeur 120 cm

UV 60



Leo

2575

Rapport Repeat Repetition 24 cm

Ancho Width Largeur 120 cm

UV 80



Hawai

2566

Rapport Repeat Repetition 24 cm

Ancho Width Largeur 120 cm

UV 60



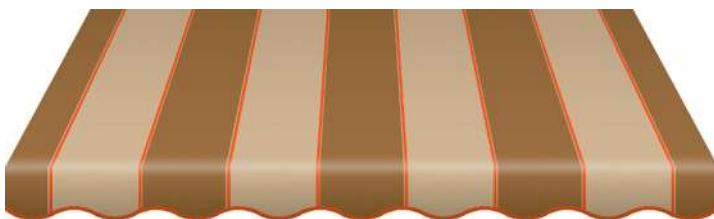
Trekking

3027

Rapport Repeat Repetition 23 cm

Ancho Width Largeur 120 cm

UV 60



Washington

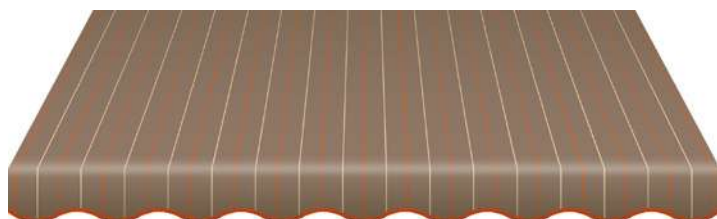
2805

Rapport Repeat Repetition 30 cm

Ancho Width Largeur 120 cm

UV 60





Londres

2822

Rapport Repeat Repetition 7 cm

Ancho Width Largeur 120 cm

UV 60



Manchester

2823

Rapport Repeat Repetition 24 cm

Ancho Width Largeur 120 cm

UV 60



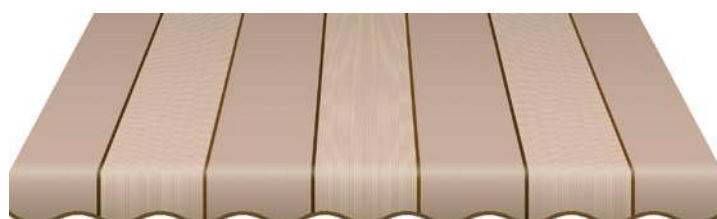
Libra

2809

Rapport Repeat Repetition 29 cm

Ancho Width Largeur 120 cm

UV 60



Texas

2238

Rapport Repeat Repetition 30 cm

Ancho Width Largeur 120 cm

UV 60



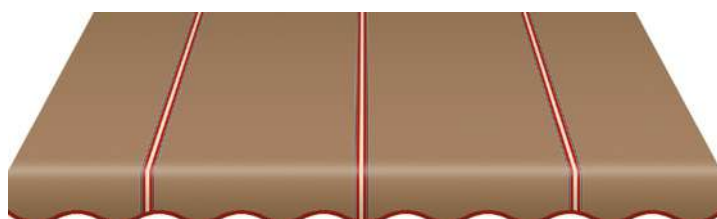
Puerto Rico

2704

Rapport Repeat Repetition 30 cm

Ancho Width Largeur 120 cm

UV 60



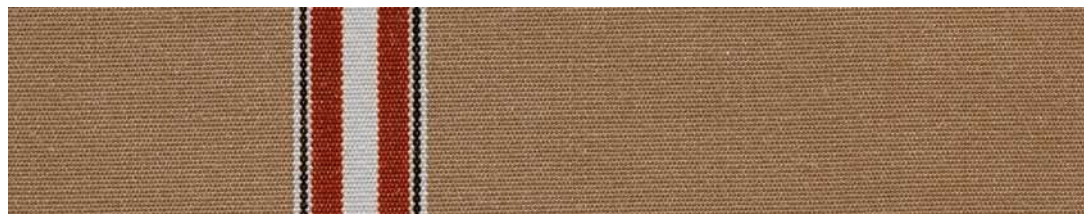
Pirineos

2790

Rapport Repeat Repetition 15 cm

Ancho Width Largeur 120 cm

UV 60



Jamaica

2701

Rapport Repeat Repetition 30 cm

Ancho Width Largeur 120 cm

UV 60



Dakar

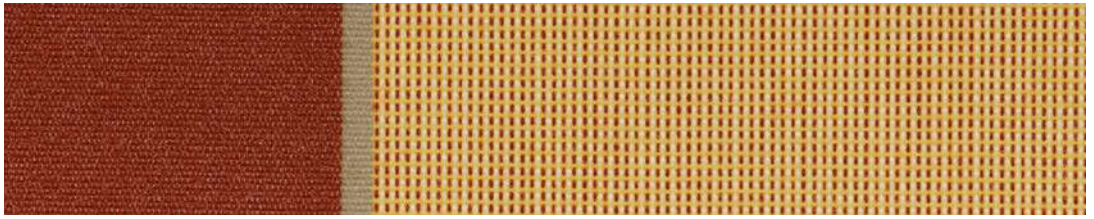
2080

Rapport Repeat Repetition 39 cm

Ancho Width Largeur 120 cm

UV 40





Kansas
2925

Rapport Repeat Repetition 30 cm

Ancho Width Largeur 120 cm

UV 60



St. Andrews
2924

Rapport Repeat Repetition 24 cm

Ancho Width Largeur 120 cm

UV 60



Sahara
2220

Rapport Repeat Repetition 24 cm

Ancho Width Largeur 120 cm

UV 60



Copenhagen
2815

Rapport Repeat Repetition 13 cm

Ancho Width Largeur 120 cm

UV 60



Tierra
2128

Rapport Repeat Repetition 24 cm

Ancho Width Largeur 120 cm

UV 80

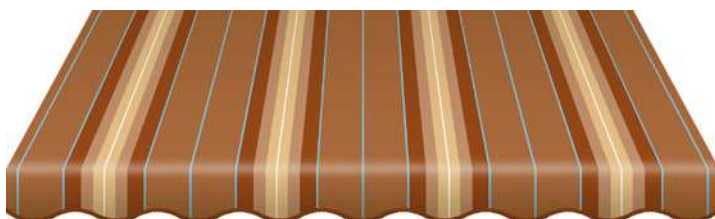
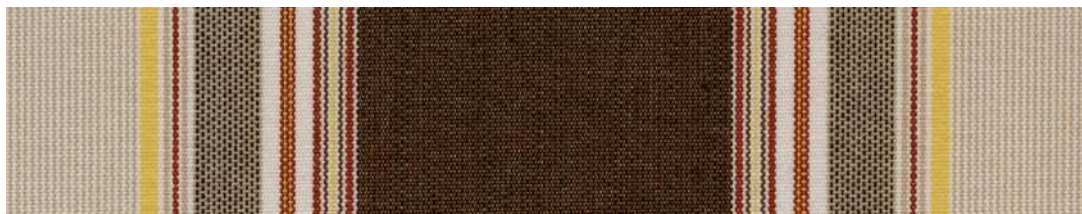


Madeira
2568

Rapport Repeat Repetition 24 cm

Ancho Width Largeur 120 cm

UV 60

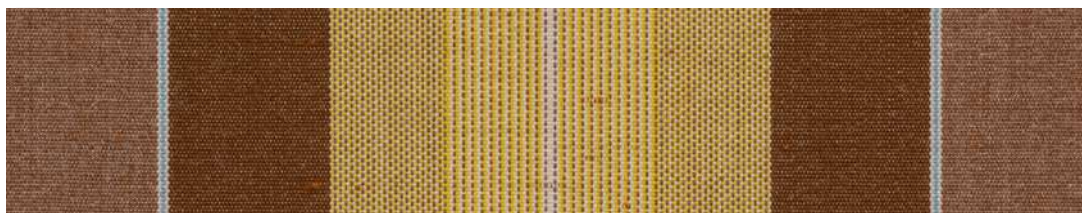


Perú
2201

Rapport Repeat Repetition 30 cm

Ancho Width Largeur 120 cm

UV 60



Napoli
2175

Rapport Repeat Repetition 17 cm

Ancho Width Largeur 120 cm

UV 40





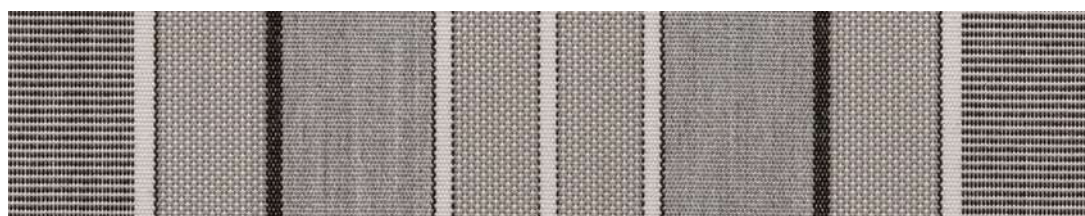
Anapurna

2640

Rapport Repeat Repetition 24 cm

Ancho Width Largeur 120 cm

UV 60



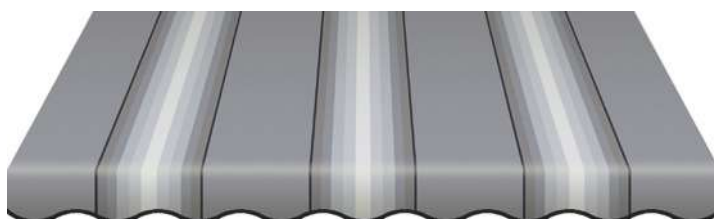
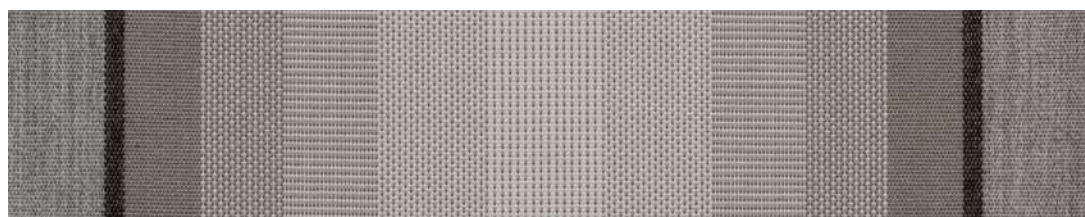
Luna

3021

Rapport Repeat Repetition 23 cm

Ancho Width Largeur 120 cm

UV 80



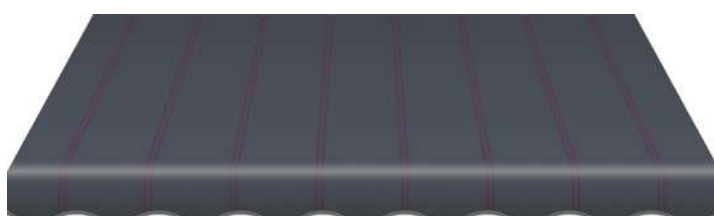
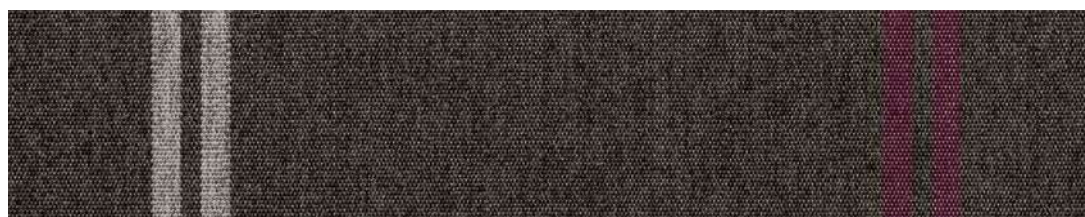
Antártida

3014

Rapport Repeat Repetition 29 cm

Ancho Width Largeur 120 cm

UV 60



Derby

2008

Rapport Repeat Repetition 24 cm

Ancho Width Largeur 120 cm

UV 80



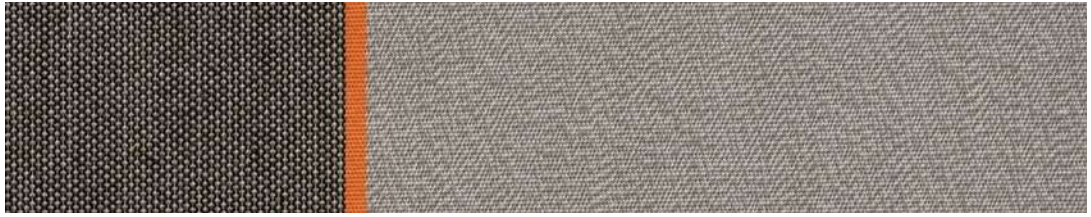
New York

2174

Rapport Repeat Repetition 30 cm

Ancho Width Largeur 120 cm

UV 60



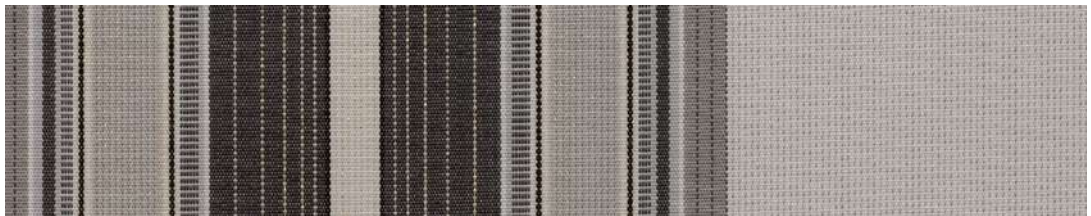
Colonia

2964

Rapport Repeat Repetition 30 cm

Ancho Width Largeur 120 cm

UV 60



París

2200

Rapport Repeat Repetition 4 cm

Ancho Width Largeur 120 cm

UV 40



Argentina

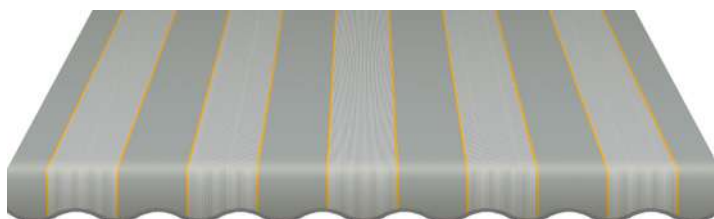
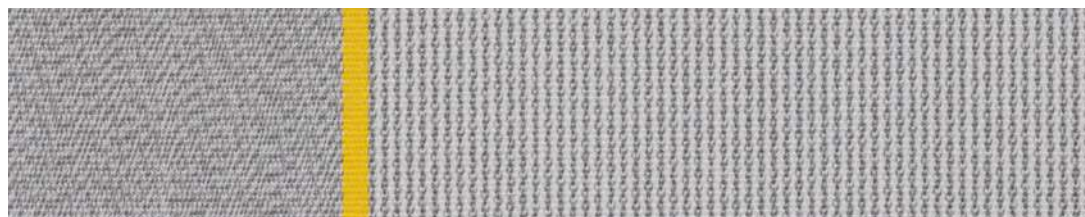
2016

Rapport Repeat Repetition 30 cm

Ancho Width Largeur 120 cm

UV 60





Nevada

2176

Rapport Repeat Repetition 30 cm

Ancho Width Largeur 120 cm

UV 60



Mónico

2154

Rapport Repeat Repetition 11 cm

Ancho Width Largeur 120 cm

UV 60



Urban

3608

Rapport Repeat Repetition 29 cm

Ancho Width Largeur 120 cm

UV 80



Características técnicas en la página 92

Technical characteristics on page 92

Caractéristiques techniques à la page 92



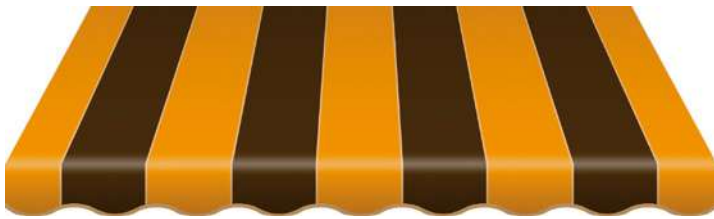
Docril

604

Rapport Repeat Repetition 20 cm

Ancho Width Largeur 120 cm

UV 80



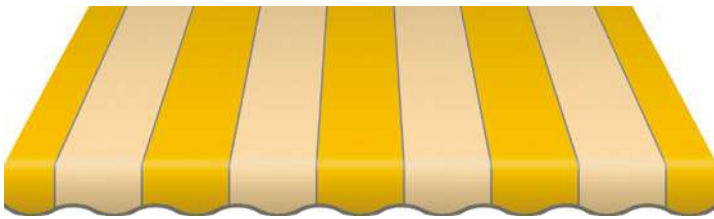
Docril

524

Rapport Repeat Repetition 24 cm

Ancho Width Largeur 120 cm

UV 80



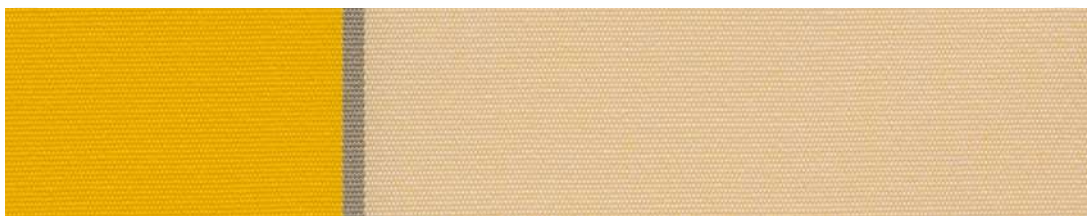
Docril

529

Rapport Repeat Repetition 20 cm

Ancho Width Largeur 120 cm

UV 80



Docril

509

Rapport Repeat Repetition 30 cm

Ancho Width Largeur 120 cm

UV 80





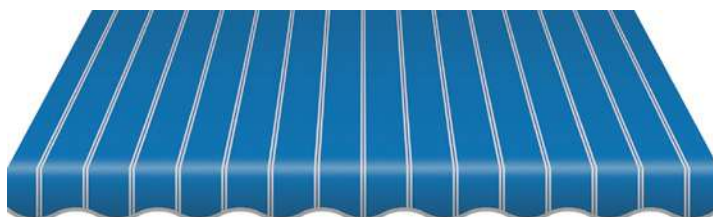
Docril

336

Rapport Repeat Repetition 24 cm

Ancho Width Largeur 120 cm

UV 80



Docril

164

Rapport Repeat Repetition 13 cm

Ancho Width Largeur 120 cm

UV 80



Docril

153

Rapport Repeat Repetition 30 cm

Ancho Width Largeur 120 cm

UV 80



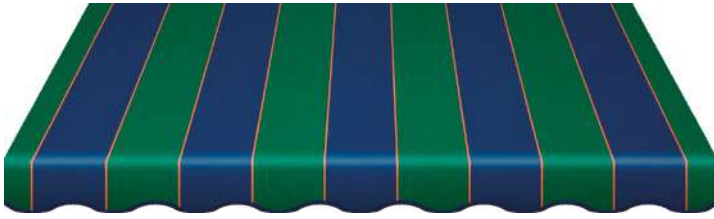
Docril

517

Rapport Repeat Repetition 24 cm

Ancho Width Largeur 120 cm

UV 80



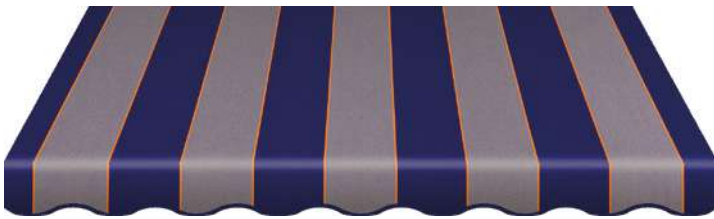
Docril

521

Rapport Repeat Repetition 24 cm

Ancho Width Largeur 120 cm

UV 80



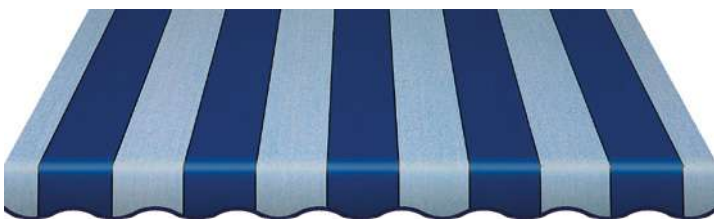
Docril

523

Rapport Repeat Repetition 24 cm

Ancho Width Largeur 120 cm

UV 80



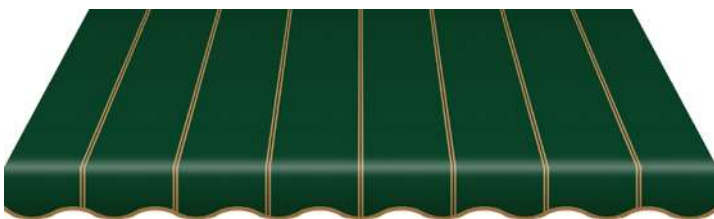
Docril

528

Rapport Repeat Repetition 24 cm

Ancho Width Largeur 120 cm

UV 80



Docril

171

Rapport Repeat Repetition 13 cm

Ancho Width Largeur 120 cm

UV 80





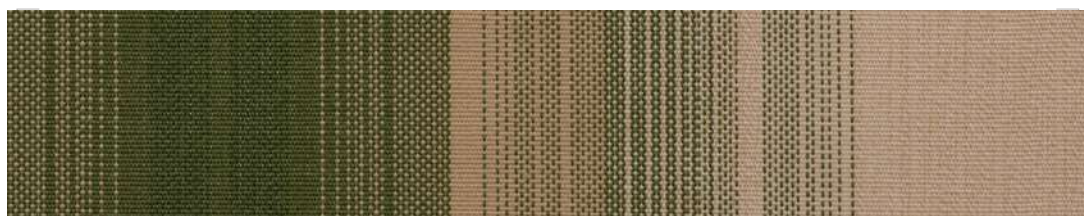
Docril

362

Rapport Repeat Repetition 24 cm

Ancho Width Largeur 120 cm

UV 80



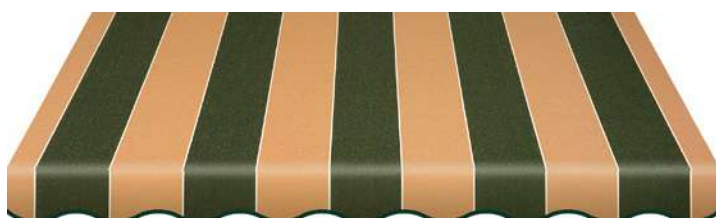
Docril

331

Rapport Repeat Repetition 30 cm

Ancho Width Largeur 120 cm

UV 80



Docril

510

Rapport Repeat Repetition 24 cm

Ancho Width Largeur 120 cm

UV 80



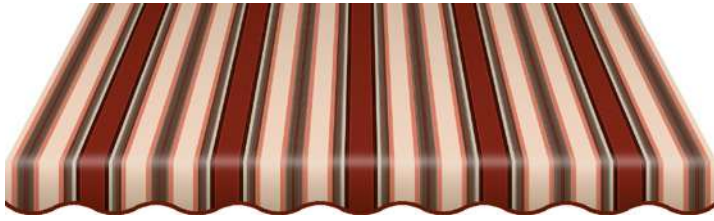
Docril

364

Rapport Repeat Repetition 24 cm

Ancho Width Largeur 120 cm

UV 80



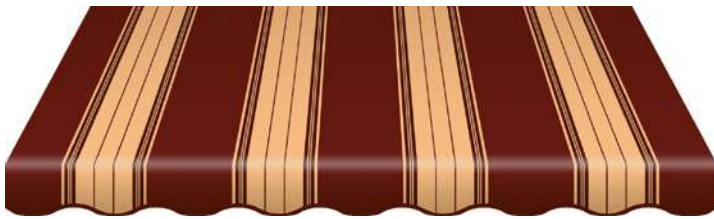
Docril

630

Rapport Repeat Repetition 24 cm

Ancho Width Largeur 120 cm

UV 80



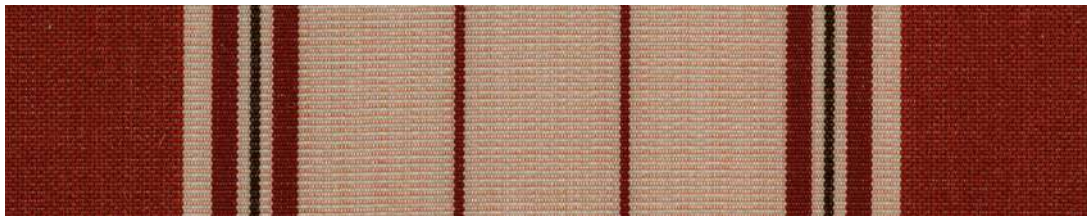
Docril

506

Rapport Repeat Repetition 30 cm

Ancho Width Largeur 120 cm

UV 80



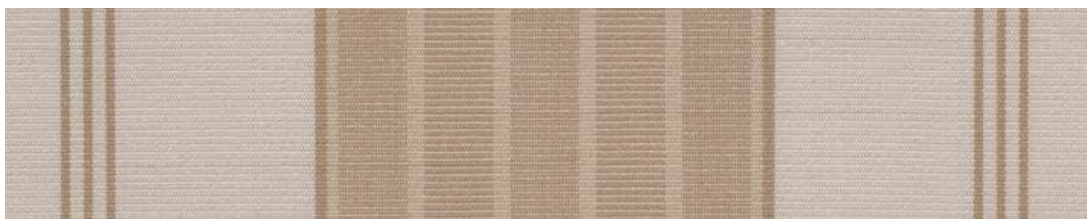
Docril

140

Rapport Repeat Repetition 16,80 cm

Ancho Width Largeur 120 cm

UV 80



Docril

360

Rapport Repeat Repetition 16,80 cm

Ancho Width Largeur 120 cm

UV 80





Docril

369

Rapport Repeat Repetition 24 cm

Ancho Width Largeur 120 cm

UV 80



Docril

368

Rapport Repeat Repetition 24 cm

Ancho Width Largeur 120 cm

UV 80



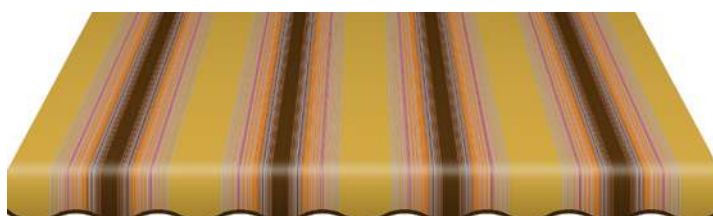
Docril

511

Rapport Repeat Repetition 24 cm

Ancho Width Largeur 120 cm

UV 80



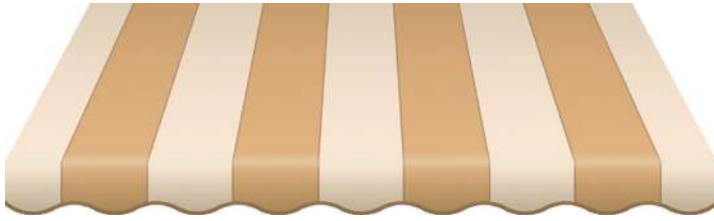
Docril

515

Rapport Repeat Repetition 24 cm

Ancho Width Largeur 120 cm

UV 80



Docril

545

Rapport Repeat Repetition 24 cm

Ancho Width Largeur 120 cm

UV 80



Docril

152

Rapport Repeat Repetition 30 cm

Ancho Width Largeur 120 cm

UV 80



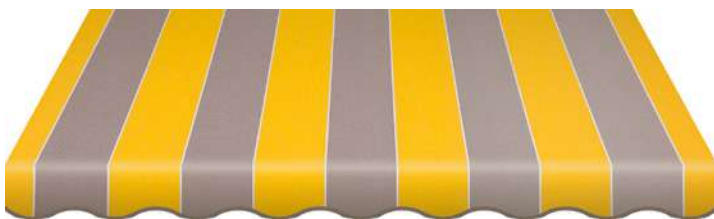
Docril

512

Rapport Repeat Repetition 1 cm

Ancho Width Largeur 120 cm

UV 80



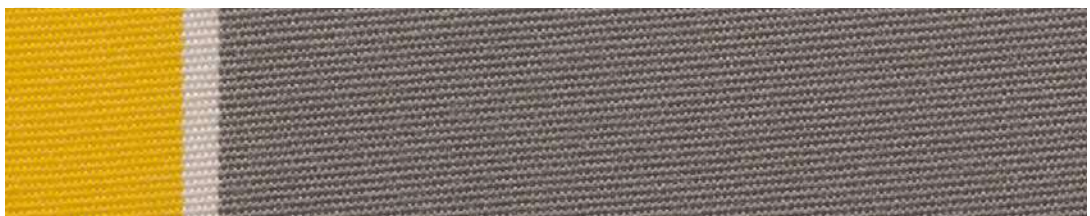
Docril

527

Rapport Repeat Repetition 24 cm

Ancho Width Largeur 120 cm

UV 80





Clásicos

Classics / Classiques



La elegancia de
siempre para
fachadas que brillan
con luz propia.

*A classic elegance for façades that shine with their
own light.*

L'élégance habituelle pour des façades qui
brillent de leur propre lumière.



Amarillo N

2015 **Rapport** Repeat Repetition 20 cm

Ancho Width Largeur 120 cm | **UV 40**



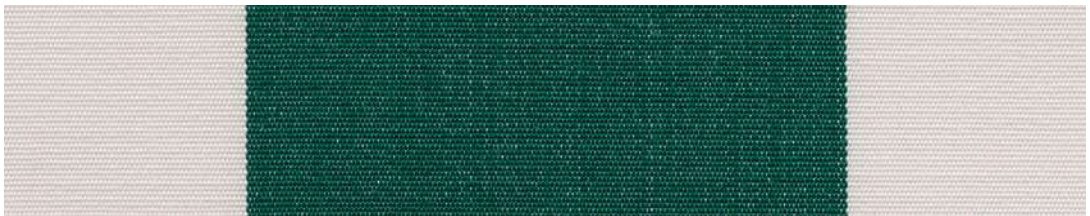
Naranja N 2052 **Rapport** *Repeat* Repetition 20 cm | **Ancho** *Width* Largeur 120 cm | **UV 60**



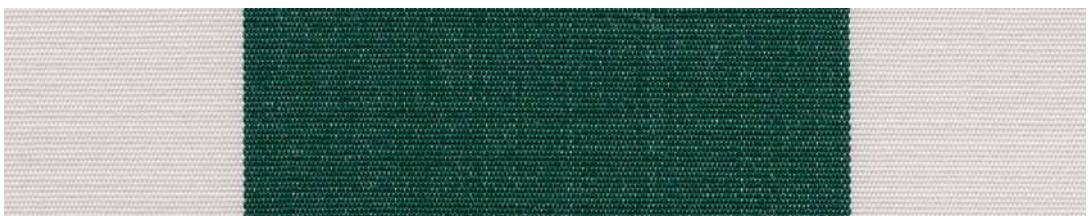
Rojo N 2212 **Rapport** *Repeat* Repetition 20 cm | **Ancho** *Width* Largeur 120 cm | **UV 40**



Verde X 2249 **Rapport** *Repeat* Repetition 20 cm | **Ancho** *Width* Largeur 120 cm | **UV 80**



Verde N 2248 **Rapport** *Repeat* Repetition 20 cm | **Ancho** *Width* Largeur 120 cm | **UV 60**



Botella N 2680 **Rapport** *Repeat* Repetition 20 cm | **Ancho** *Width* Largeur 120 cm | **UV 60**



Azul Real X 2360 **Rapport** Repeat Repetition 20 cm | **Ancho** Width Largeur 120 cm | **UV 80**



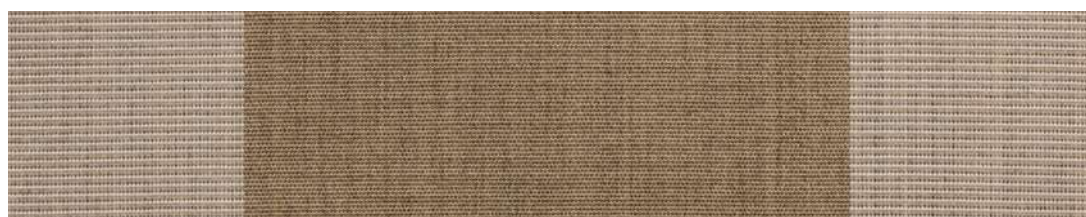
Azul Real N 2359 **Rapport** Repeat Repetition 20 cm | **Ancho** Width Largeur 120 cm | **UV 60**



Azul X 2020 **Rapport** Repeat Repetition 20 cm | **Ancho** Width Largeur 120 cm | **UV 80**



Azul N 2019 **Rapport** Repeat Repetition 20 cm | **Ancho** Width Largeur 120 cm | **UV 60**



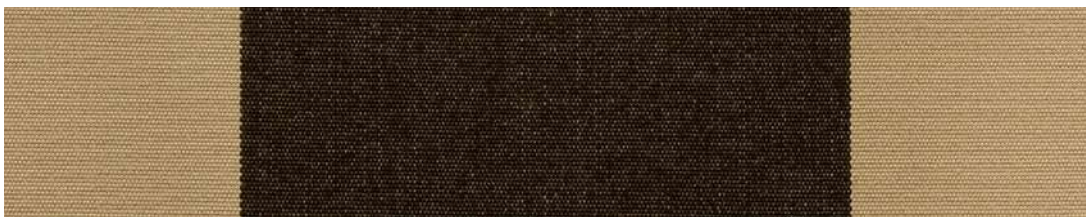
Integral X 2681 **Rapport** Repeat Repetition 20 cm | **Ancho** Width Largeur 120 cm | **UV 60**



Marrón X 2165 **Rapport** *Repeat* Repetition 20 cm | **Ancho** *Width* Largeur 120 cm | **UV 80**



Marrón N 2149 **Rapport** *Repeat* Repetition 20 cm | **Ancho** *Width* Largeur 120 cm | **UV 60**



Marrón Beige 2148 **Rapport** *Repeat* Repetition 20 cm | **Ancho** *Width* Largeur 120 cm | **UV 80**



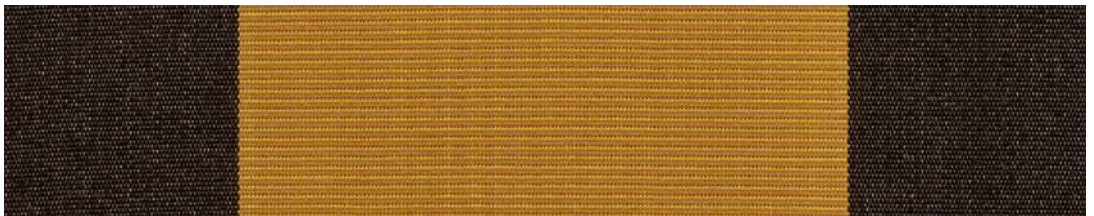
Beige X 2275 **Rapport** *Repeat* Repetition 20 cm | **Ancho** *Width* Largeur 120 cm | **UV 60**



Ocre Marrón 2183 **Rapport** *Repeat* Repetition 20 cm | **Ancho** *Width* Largeur 120 cm | **UV 80**



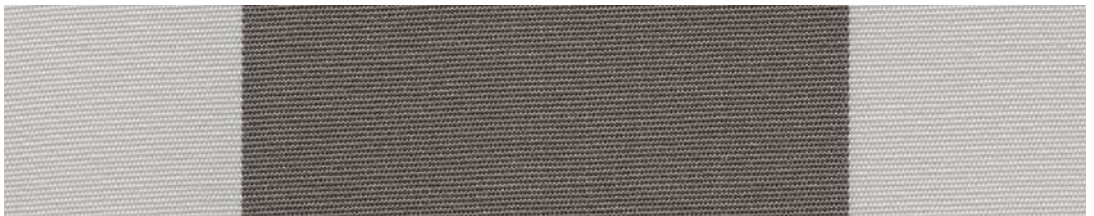
Ocre X 2641 **Rapport** Repeat Repetition 20 cm | **Ancho** Width Largeur 120 cm | **UV 60**



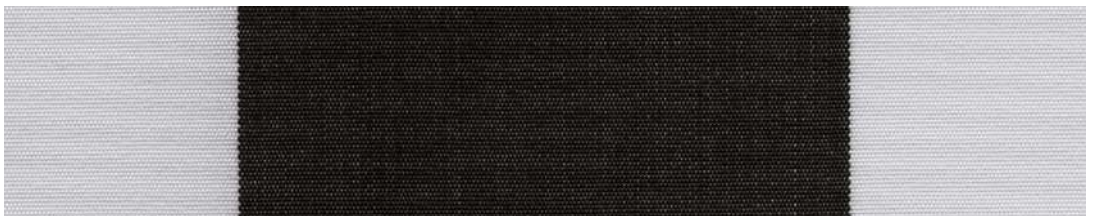
Kenia 2120 **Rapport** Repeat Repetition 20 cm | **Ancho** Width Largeur 120 cm | **UV 80**



Piedra X 2682 **Rapport** Repeat Repetition 20 cm | **Ancho** Width Largeur 120 cm | **UV 60**



Gris N 2103 **Rapport** Repeat Repetition 20 cm | **Ancho** Width Largeur 120 cm | **UV 60**



Negro N 2171 **Rapport** Repeat Repetition 20 cm | **Ancho** Width Largeur 120 cm | **UV 60**

| | |
|--|---|
| | Características técnicas en la página 90 |
| | <i>Technical characteristics on page 90</i> |
| | Caractéristiques techniques à la page 90 |

Tándem



Estilo contemporáneo con ese toque vintage.

A contemporary style with a vintage touch.

Un style contemporain avec cette touche vintage.



Tándem Blanco
8442 / UV 40



Tándem Marfil
8443 / UV 40



Tándem Sand
8441 / UV 60



Tándem Beige
8452 / UV 80



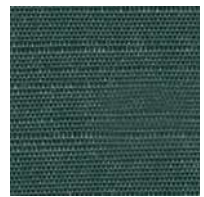
Tándem Integral
8444 / UV 80



Tándem Grape
8449 / UV 60



Tándem Granate
8451 / UV 80



Tándem Botella
8450 / UV 80



Tándem Lavanda
8447 / UV 80



Tándem Marino
8448 / UV 60



Tándem Piedra
8445 / UV 80



Tándem Grafito 8446 / UV 80



Tándem Marino 5x5 8455 **Rapport** Repeat Repetition 10 cm | **Ancho** Width Largeur 120 cm | **UV 60**



Tándem Botella 5x5 8456 **Rapport** Repeat Repetition 10 cm | **Ancho** Width Largeur 120 cm | **UV 60**



Tándem Integral 5x5 8453 **Rapport** Repeat Repetition 10 cm | **Ancho** Width Largeur 120 cm | **UV 60**



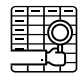
Tándem Granate 5x5 8457 **Rapport** Repeat Repetition 10 cm | **Ancho** Width Largeur 120 cm | **UV 60**



Tándem Grafito 5x5 8458 **Rapport** Repeat Repetition 10 cm | **Ancho** Width Largeur 120 cm | **UV 80**



Tándem Grape 5x5 8454 **Rapport** Repeat Repetition 10 cm | **Ancho** Width Largeur 120 cm | **UV 80**


Características técnicas en la página 90
Technical characteristics on page 90
 Caractéristiques techniques à la page 90

Estampados



Prints / Impressions

No hay nada más relajante que un paseo por la naturaleza.

There is nothing more relaxing than a walk in nature.

Il n'y a rien de plus relaxant qu'une promenade dans la nature.



Ecuador 2

ECV2L

Ancho Width Largeur 120 cm

UV 60



Brasil 1

BRA1L

Ancho Width Largeur 120 cm

UV 60



Brasil 2

BRA2L

Ancho Width Largeur 120 cm

UV 60



Paradis

PAVAL

Ancho Width Largeur 120 cm

UV 60



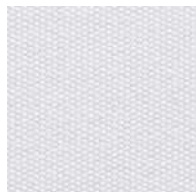
Solrain



Adaptados para soportar las inclemencias del sol y la lluvia.

Adapted to withstand the harsh effects of sun and rain.

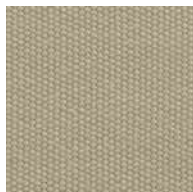
Adaptés pour résister aux rigueurs du climat: soleil et pluie.



SR Blanco

8268

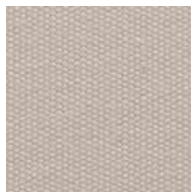
UV 40



SR Seda

8278

UV 60



SR Marfil

8272

UV 40



SR Beige

8267

UV 80



SR Coco

2047

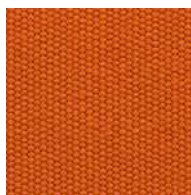
UV 80



SR Siroco

2075

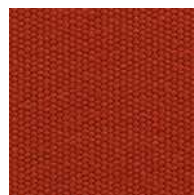
UV 60



SR Azafrán

2027

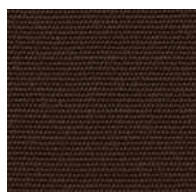
UV 80



SR Teja

8279

UV 80



SR Café

2422

UV 80



SR Amarillo

8265

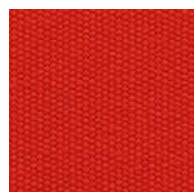
UV 80



SR Naranja

8274

UV 80



SR Rojo

8277

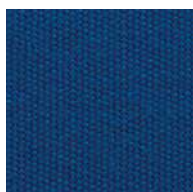
UV 80



SR Granate

8270

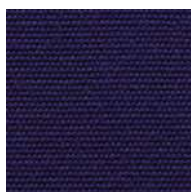
UV 80



SR Azul Real

8276

UV 80



SR Azul

8266

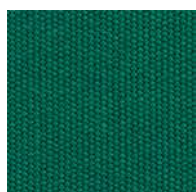
UV 80



SR Marino

8273

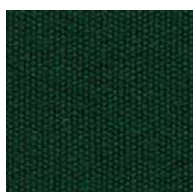
UV 80



SR Verde

8280

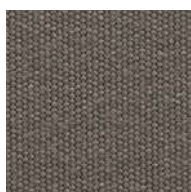
UV 80



SR Botella

8269

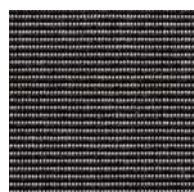
UV 80



SR Gris

8271

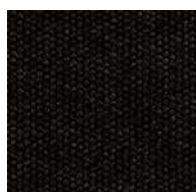
UV 60



SR Tweed Negro

2085

UV 80



SR Negro

8275

UV 80



Características técnicas en la página 91

Technical characteristics on page 91

Caractéristiques techniques à la page 91

Force



Fabricado para lograr un comportamiento mecánico óptimo.

Manufactured for optimum mechanical performance.

Fabriqué pour une performance mécanique optimale.



Force Blanco
3430



Force Marfil
3431



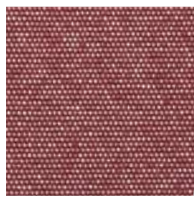
Force Beige
3432



Force Caramel
3433



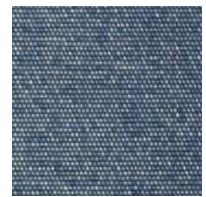
Force Tennera
3434



Force Granate
3435



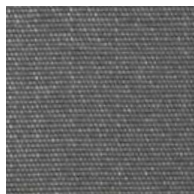
Force Botella
3436



Force Marino
3437



Force Perla
3438



Force Basalto
3439



Force Antracita
3440



Force Negro 3441



Características técnicas en la página 91
Technical characteristics on page 91
Caractéristiques techniques à la page 91

Top Fr



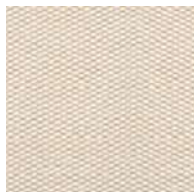
Rendimiento en solidez de color y comportamiento mecánico.

Optimum colour fastness and mechanical performance.

Performance en résistance des couleurs et de comportement mécanique.



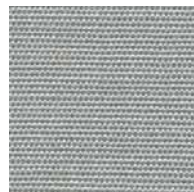
Top FR Blanco
8980



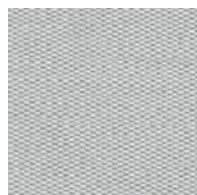
Top FR Marfil
8988



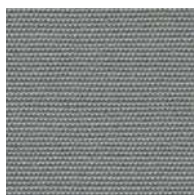
Top FR Beige
8985



Top FR Perla
3991



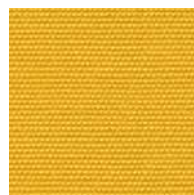
Top FR Silver
8992



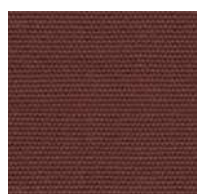
Top FR Gris
8987



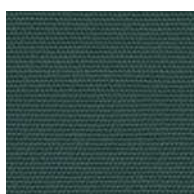
Top FR Grafito
3990



Top Fr Amarillo
8984



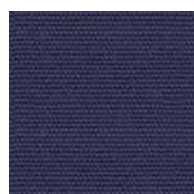
Top FR Granate
8986



Top FR Botella
8981



Top FR Azul Real
8991



Top FR Marino
8989



Top FR Negro 8990



Características técnicas en la página 92
Technical characteristics on page 92
Caractéristiques techniques à la page 92

PVC

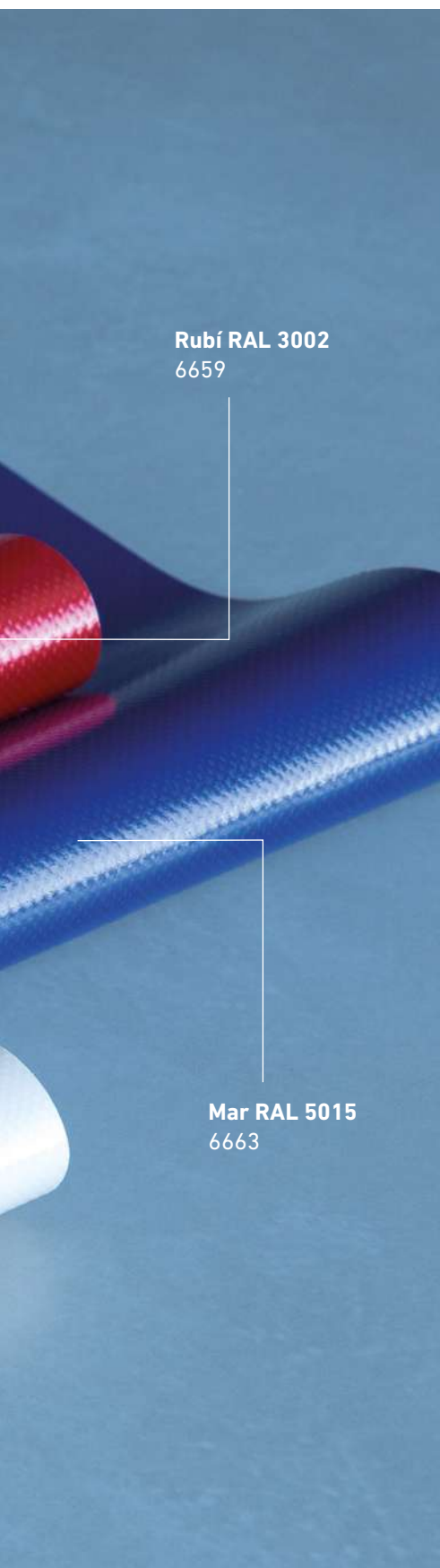
ÓPTIMO RENDIMIENTO EN
CONDICIONES DE HUMEDAD.

Musgo RAL 6005
6669

Blanco
6651

Los tejidos fabricados en PVC destacan por ser totalmente impermeables, soportando intensas lluvias y vientos.

Resulta especialmente efectivo en ambientes húmedos, ayudando a que el interior de la estancia se mantenga siempre seca.



Rubí RAL 3002
6659

Mar RAL 5015
6663

OPTIMAL PERFORMANCE IN WET CONDITIONS.

The most useful property of PVC fabrics is that they are fully waterproof, so are able to withstand intense wind and rain.

They are particularly effective in wet environments, helping to make sure that indoor spaces are always kept dry.

PERFORMANCE OPTIMALE EN MILIEU HUMIDE.

Les tissus en PVC se distinguent par leur imperméabilité totale et leur résistance aux pluies et aux vents intenses.

Il est particulièrement efficace dans les environnements humides, aidant à garder l'intérieur de la pièce toujours sec.

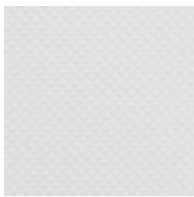
Monza



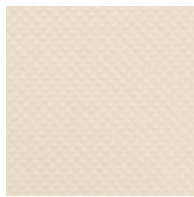
Tejidos técnicos que aportan soluciones en protección solar, carpas, toldos.

Technical fabrics that provide solutions for solar protection, canopies and awnings.

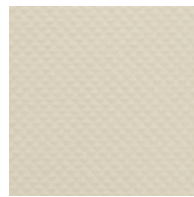
Tissus techniques qui apportent des solutions en matière de protection solaire, tentes, auvents.



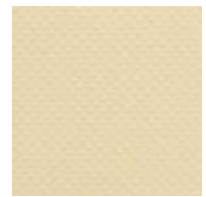
Blanco
6172



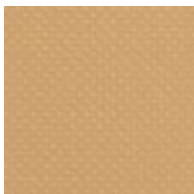
Hueso
RAL 9010
6952



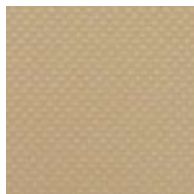
Marfil
RAL 1013
6511



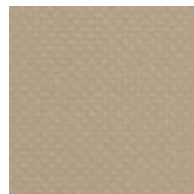
Champagne
RAL 1015
6954



Beige
RAL 1001
6189



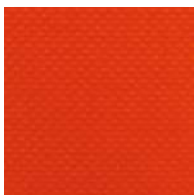
Avena
6957



Sand
6960



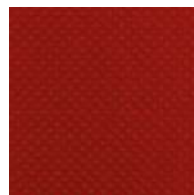
Amarillo
RAL 1003
6177



Naranja
RAL 2004
6181



Azafrán
6963



Rojo
RAL 3020
6179



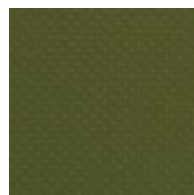
Granate
RAL 3005
6514



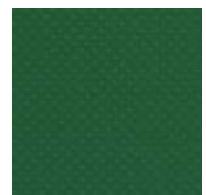
Gazelle
6965



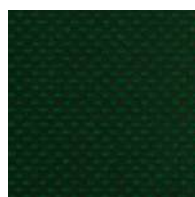
Oliva
6967



Army
6969



Verde
RAL 6026
6176



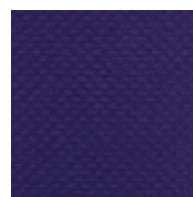
Musgo
RAL 6005
6971



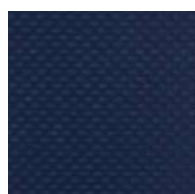
Mar
RAL 5015
6973



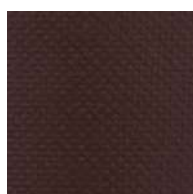
Azul Claro
RAL 5005
6169



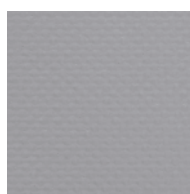
Azul Oscuro
RAL 5002
6197



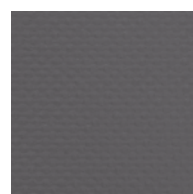
Marino
RAL 5013
6805



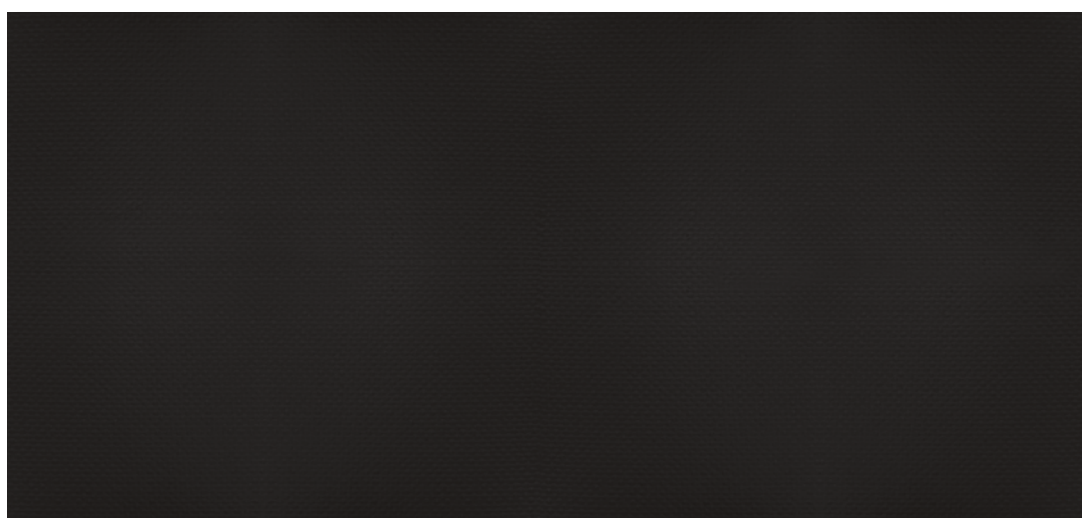
Marrón
RAL 8014
6976



Gris Claro
RAL 7038
6175



Gris Oscuro
RAL 7037
6978



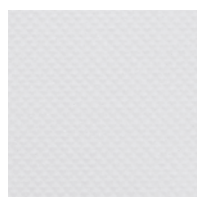
Negro RAL 9005 6141

| | |
|--|--|
| | Características técnicas en la página 92 <i>Technical characteristics on page 92</i> Caractéristiques techniques à la page 92 |
|--|--|

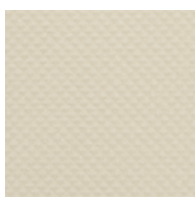
Ofrece gran resistencia y estabilidad mecánica. Una solución ignífuga e impermeable con tratamiento antimoho y fácil de limpiar.

It provides great strength and mechanical stability. A fireproof and waterproof solution that has an anti-mildew treatment and is easy to clean.

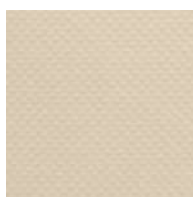
Il offre une résistance et une stabilité mécanique élevées. Une solution ignifuge et étanche avec un traitement anti-moisissure et facile à nettoyer.



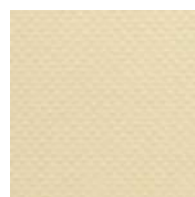
Blanco
6651



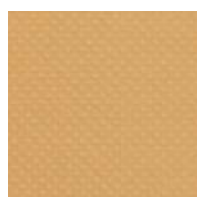
Marfil
RAL 1013
6652



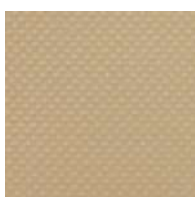
Arena
6300



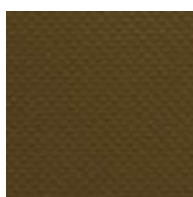
Champagne
RAL 1015
6677



Beige
6653



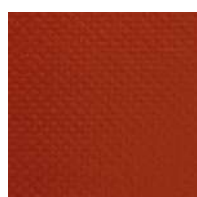
Avena
6678



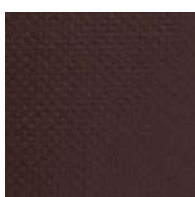
Coyote
6679



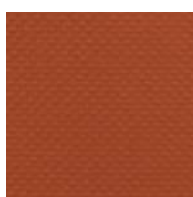
Mica
RAL 1035
6301



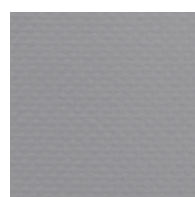
Teja
6305



Marrón
RAL 8014
6682



Cobre
6683



Metal
6672



Amarillo Pastel
6654



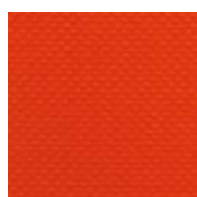
Limón
RAL 1021
6655



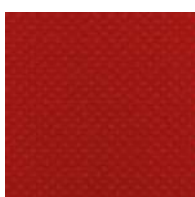
Amarillo
RAL 1003
6656



Mostaza
6308



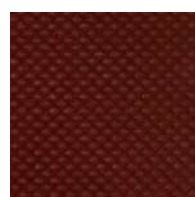
Naranja
RAL 2004
6658



Rubí
RAL 3002
6659



Azafrán
6684



Granate
RAL 3005
6660



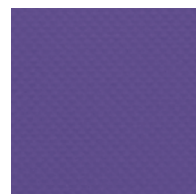
Rosa
6661



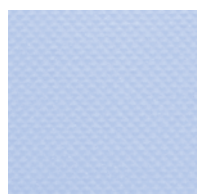
Coral
6303



Fucsia
RAL 4006
6662



Violeta
RAL 4005
6302



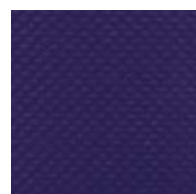
Sky
6685



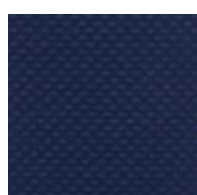
Brisa
6307



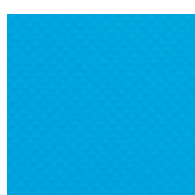
Mar
RAL 5015
6663



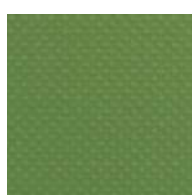
Azul Oscuro
RAL 5002
6664



Marino
RAL 5013
6665



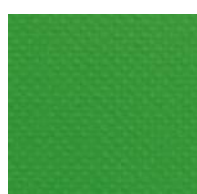
Acqua
6686



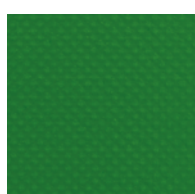
Fresh
6879



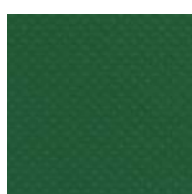
Anís
6304



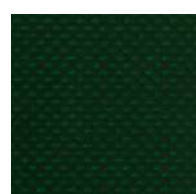
Verde Claro
RAL 6018
6675



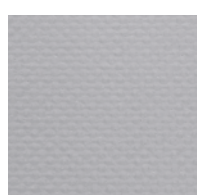
Hierba
RAL 6001
6667



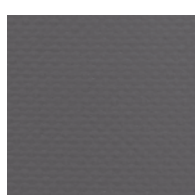
Verde
RAL 6026
6668



Musgo
RAL 6005
6669



Silver
RAL 7047
6670



Gris Oscuro
RAL 7037
6671



Antracita
RAL 7016
6306



Negro
RAL 9005
6674

| | |
|--|---|
| | <p>Características técnicas en la página 92 <i>Technical characteristics on page 92</i> Caractéristiques techniques à la page 92</p> |
|--|---|



Blanco
86-2044

Rojo
96-8255

SOLTIS

Azul Marino
92-50342

Serge Ferrari 

Soltis es una gama de tejidos composites para utilizarse tanto en el interior como en espacios exteriores.

Perforados, impermeables e incluso opacos, ofrecen visibilidad hacia el exterior, protección contra el calor o intimidad total dependiendo de las necesidades de cada espacio o usuario.

Soltis is a range of composite fabrics for both indoor and outdoor use.

Perforated, waterproof and even opaque, they provide visibility to the outside, protection against heat or total privacy, depending on the needs of each space or user.

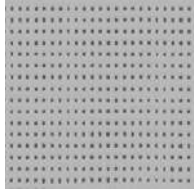
Soltis est une gamme de tissus composites pour l'intérieur et l'extérieur.

Perforés, imperméables et même opaques, ils offrent une visibilité vers l'extérieur, une protection contre la chaleur ou une intimité totale selon les besoins de chaque espace ou utilisateur.

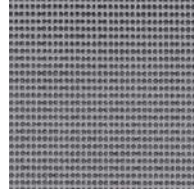
Soltis Horizon 86



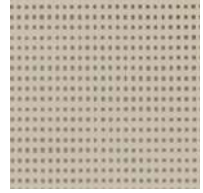
Blanco
● 86-2044



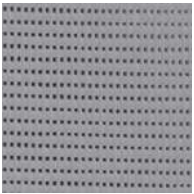
Alu/Blanco
● 86-2051



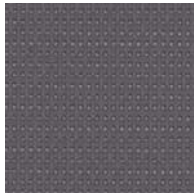
Metal Amartillado
● 86-2045



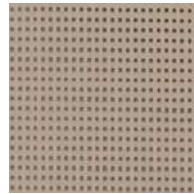
Champagne
● 86-2175



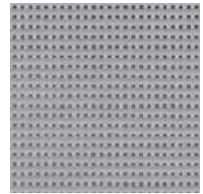
Alu/Crudo
● 86-2046



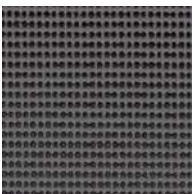
Hormigón
● 86-2167



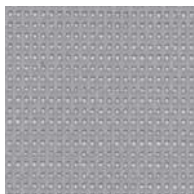
Beige Arena
● 86-2135



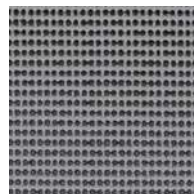
Alu/Alu
● 86-2048



Antracita
● 86-2047



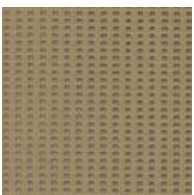
Gris Claro
● 86-2171



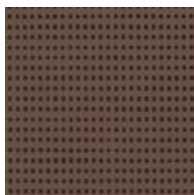
Alu/Antracita
● 86-2068



Negro
● 86-2053



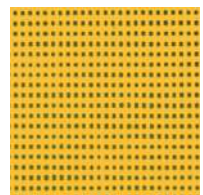
Pimienta
● 86-2012



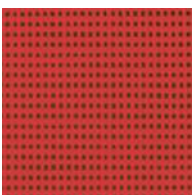
Chocolate
■ 86-2148



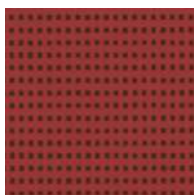
Bronce
● 86-2043



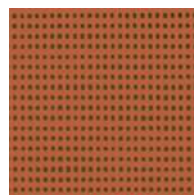
Girasol
● 86-2166



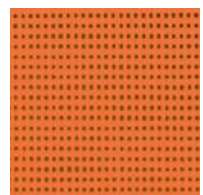
Rojo
■ 86-8255



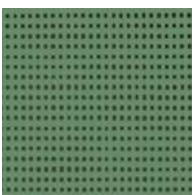
Moscatel
■ 86-50260



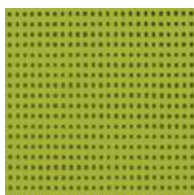
Caramelo
■ 86-50261



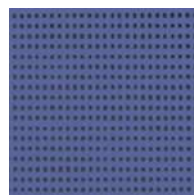
Naranja
■ 86-8204



Verde Musgo
■ 86-2158

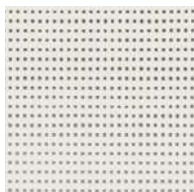


Bambú
■ 86-50333

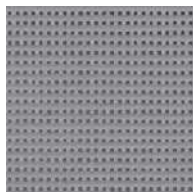


Azul Noche
■ 86-2161

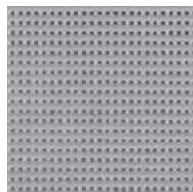
Soltis Harmony 88



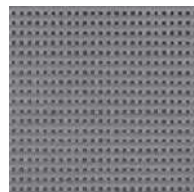
Blanco
● 88-2044



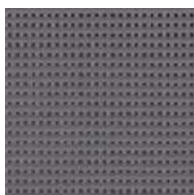
Gris Claro
● 88-2171



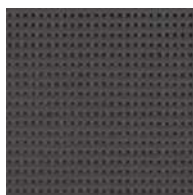
Alu / Alu
● 88-2048



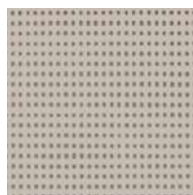
Hormigón
● 88-2167



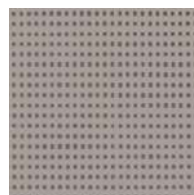
Antracita
● 88-2047



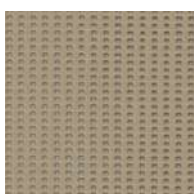
Negro
● 88-2053



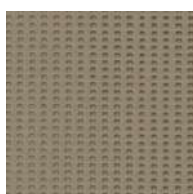
Champagne
● 88-2175



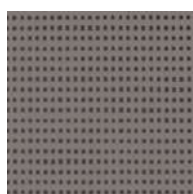
Beige Arena
● 88-2135



Cáñamo
● 88-50265



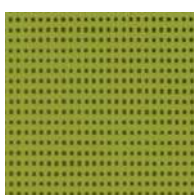
Pimienta
● 88-2012



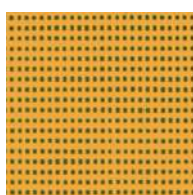
Marrón Ceniza
● 88-50329



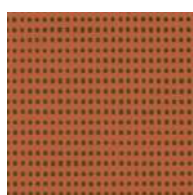
Bronce
● 88-2043



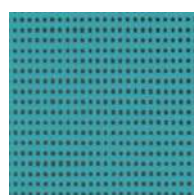
Bambú
■ 88-50333



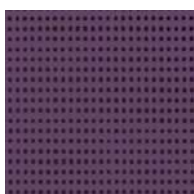
Albaricoque
■ 88-50332



Paprika
■ 88-50308



Bermudas
■ 88-50306



Breva
■ 88-50335



Características técnicas en la página 93
Technical characteristics on page 93
Caractéristiques techniques à la page 93

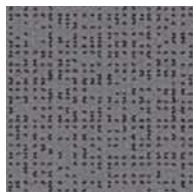
Soltis Perform 92



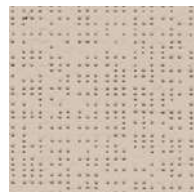
Blanco
● 92-2044



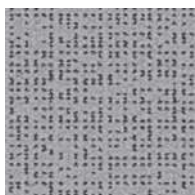
Gris Claro
● 92-2171



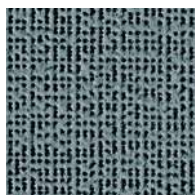
Alu / Antracita
■ 92-2068



Beige Arena
● 92-2135



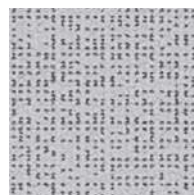
Alu/Blanco
● 92-2051



Metal Amartillado
● 92-2045



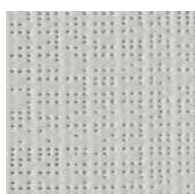
Nube
● 92-50272



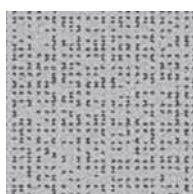
Alu/Crudo
● 92-2046



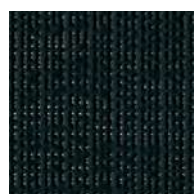
Hormigón
● 92-2167



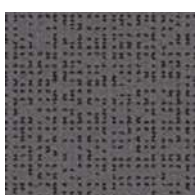
Gris Interferencial
■ 92-2065



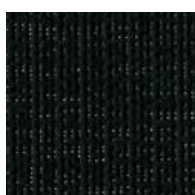
Alu/Alu
● 92-2048



Antracita
● 92-2047



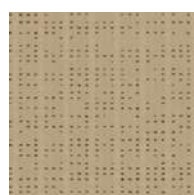
Alu/Gris Medio
● 92-2074



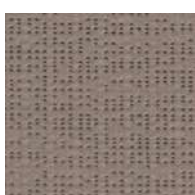
Negro
● 92-2053



Champagne
● 92-2175



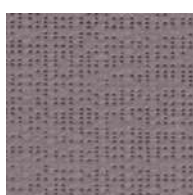
Cáñamo
● 92-50265



Pimienta
● 92-2012



Oro
■ 92-50273



Habana
■ 92-50266



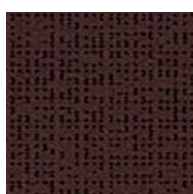
Bronce
● 92-2043



Coleóptero
■ 92-2149



Chocolate
■ 92-2148



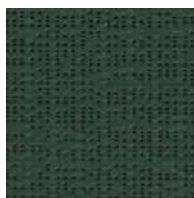
Marrón
■ 92-2137



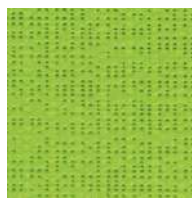
Verde Musgo
■ 92-2158



Petróleo
■ 92-50264



Verde abeto
■ 92-2039



Anís
■ 92-2157



Bambú
■ 92-50333



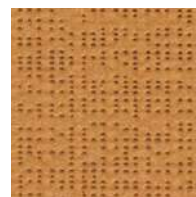
Amarillo Medio
■ 92-2013



Girasol
■ 92-2166



Naranja
■ 92-8204



Cobre
■ 92-50274



Caramelo
■ 92-50261



Zanahoria
■ 92-2172



Terracota
■ 92-50267



Rojo Terciopelo
■ 92-2152



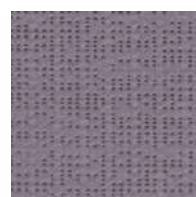
Moscatel
■ 92-50260



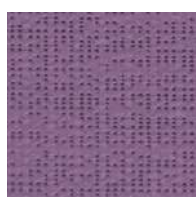
Granadina
■ 92-50268



Rojo
■ 92-8255



Malva
■ 92-2163



Lavanda
■ 92-2164



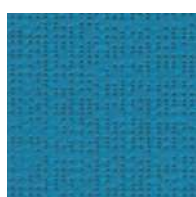
Ciruela
■ 92-50336



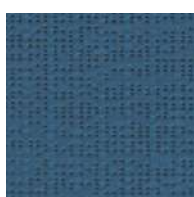
Turquesa Intenso
■ 92-50271



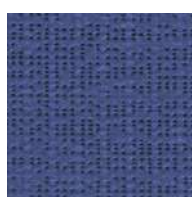
Hawai
■ 92-50269



Azul Lago
■ 92-2160



Cardo
■ 92-50270



Azul Noche
■ 92-2161



Azul Marino
■ 92-50342



Características técnicas en la página 94
Technical characteristics on page 94
 Caractéristiques techniques à la page 94

Soltis Lounge 96



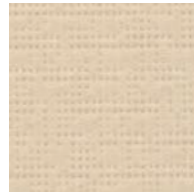
Blanco
96-8102



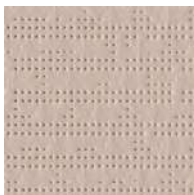
Karité
96-50843



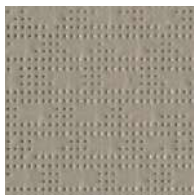
Blanco Roto
96-1103



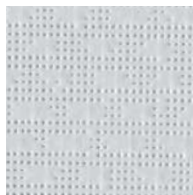
Arena
96-8861



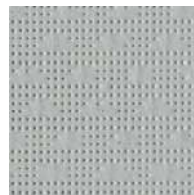
Beige Arena
96-2135



Topo
96-50850



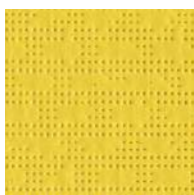
Nube
96-50272



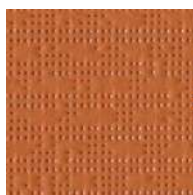
Piedra
96-2171



Platino
96-50844



Aureolina
96-50845



Caramelo
96-50261



Rojo
96-8255



Cítrico
96-50846



Tilo
96-50848



Jungla
96-50849



Acapulco
96-50847



Atlántida
96-50851



Azul Noche
96-2161



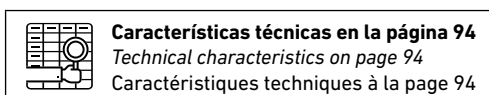
Bronce
96-2043



Antracita
96-2047



Negro
96-8450



Características técnicas en la página 94
Technical characteristics on page 94
Caractéristiques techniques à la page 94

Soltis Opaque 622



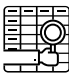
White 622-50537



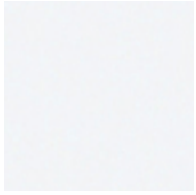
Beige 622-50539



Grey 622-50542

| | |
|---|--|
|  | Características técnicas en la página 95 <i>Technical characteristics on page 95</i> Caractéristiques techniques à la page 95 |
|---|--|

Soltis Proof 502



Blanco
502V2-8102C



Gris Claro
502V2-2171C



Hormigón
502V2-2167C



Negro
502V2-8450C



Rojo Terciopelo
502V2-2152C



Hoja Otoñal
502V2-2138C



Alu
502V2-2168C



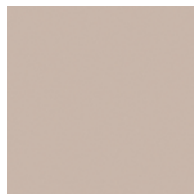
Champagne
502V2-8341C



Arena
502V2-8861C



Cáñamo
502V2-50265C



Beige Arena
502V2-2135C



Pimienta
502V2-2012C



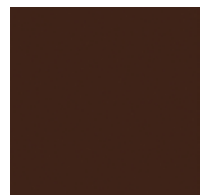
Capuchino
502V2-2141C



Chocolate
502V2-2148C



Kaki
502V2-50669C



Marrón
502V2-2137C



Limón
502V2-50674C



Girasol
502V2-2166C



Ocre
502V2-50671C



Naranja
502V2-8204C



Zanahoria
502V2-2172C



Frambuesa
502V2-2150C



Rojo
502V2-8255C



Terracotta
502V2-20185C



Burdeos
502V2-8284C



Anís
502V2-2157C



Oliva
502V2-50668C



Verde Musgo
502V2-2158C



Nenúfar
502V2-50670C



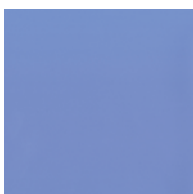
Verde Tenis
502V2-8056C



Verde Botella
502V2-2156C



Celadón
502V2-50675C



Azul Báltico
502V2-50676C



Azul Lago
502V2-2160C



Azul Oscuro
502V2-50673C



Cardo
502V2-50270C



Azul Tempestad
502V2-50672C



Azur
502V2-50677C



Azul Noche
502V2-2161C



Azul Marino
502V2-1125C



Características técnicas en la página 95
Technical characteristics on page 95
 Caractéristiques techniques à la page 95

Soltis Opaque B92 y Proof W96

Soltis Opaque B92



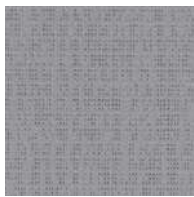
Blanco
B92-1044



Gris Claro
B92-2171



Beige Arena
B92-2135



Alu
B92-1046



Metal Amartillado
B92-1045



Bronce
B92-1043



Características técnicas en la página 95
Technical characteristics on page 95
Caractéristiques techniques à la page 95

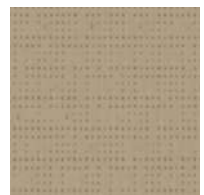
Soltis Proof W96



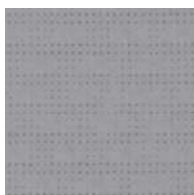
Blanco
W96-8102



Blanco Roto
W96-1103



Vainilla
W96-8861



Nube
W96-2171

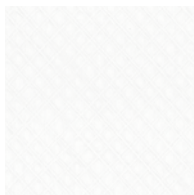


Antracita
W96-2047



Características técnicas en la página 96
Technical characteristics on page 96
Caractéristiques techniques à la page 96

Soltis Elite



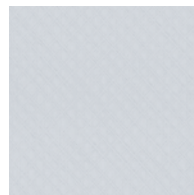
Blanco
F5390-8102



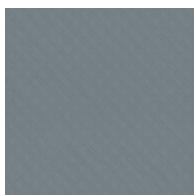
Blanco Roto
F5390-1103



Vainilla
F5390-8861



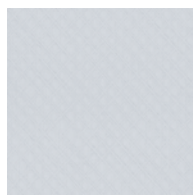
Karité
F5390-50843



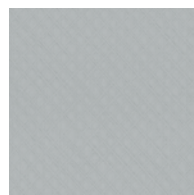
Beige Arena
F5390-2135



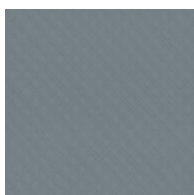
Topo
F5390-50850



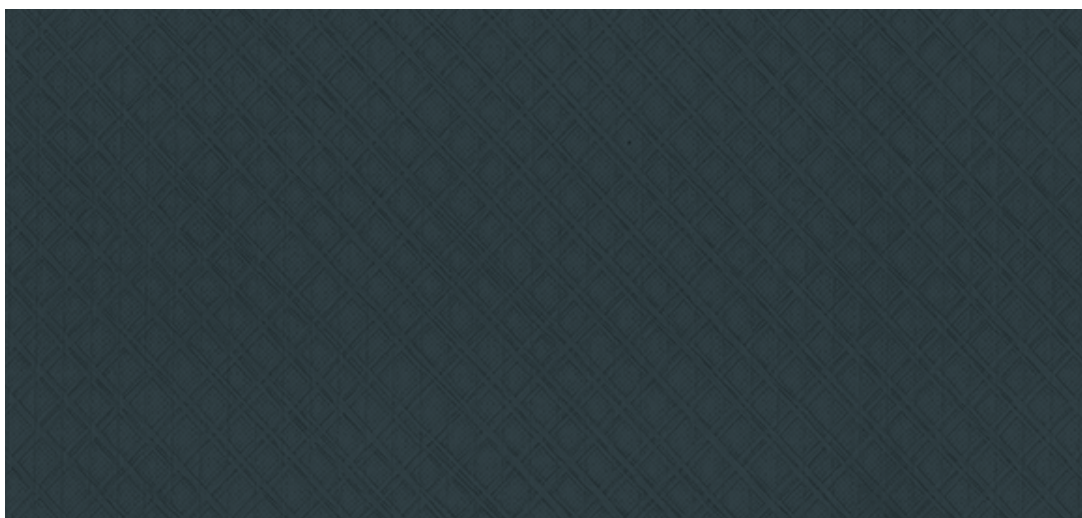
Nube
F5390-50272



Piedra
F5390-2171



Platino
F5390-50844



Antracita F5390-2047



Características técnicas en la página 96
Technical characteristics on page 96
Caractéristiques techniques à la page 96



**GLOSARIO DE
REFERENCIAS**

**CARACTERÍSTICAS
TÉCNICAS**

*GLOSSARY OF REFERENCES
GLOSSAIRE DE REFERENCES*

*TECHNICAL CHARACTERISTICS
CARACTÉRISTIQUES TECHNIQUES*

| REF. ▼ | NOMBRE / NAME / NOM | PÁG. |
|--------|---------------------|------|
| 002 | Docril 002 | 20 |
| 037 | Docril 037 | 20 |
| 060 | Docril 060 | 20 |
| 067 | Docril 067 | 20 |
| 080 | Docril 080 | 20 |
| 086 | Docril 086 | 20 |
| 098 | Docril 098 | 20 |
| 101 | Docril 101 | 20 |
| 113 | Docril 113 | 20 |
| 140 | Docril 140 | 48 |
| 152 | Docril 152 | 50 |
| 153 | Docril 153 | 45 |
| 164 | Docril 164 | 45 |
| 171 | Docril 171 | 46 |
| 197 | Docril 197 | 20 |
| 331 | Docril 331 | 47 |
| 336 | Docril 336 | 45 |
| 360 | Docril 360 | 48 |
| 362 | Docril 362 | 47 |
| 364 | Docril 364 | 47 |
| 368 | Docril 368 | 49 |
| 369 | Docril 369 | 49 |
| 506 | Docril 506 | 48 |
| 509 | Docril 509 | 44 |
| 510 | Docril 510 | 47 |
| 511 | Docril 511 | 49 |
| 512 | Docril 512 | 50 |
| 515 | Docril 515 | 49 |
| 517 | Docril 517 | 45 |
| 521 | Docril 521 | 46 |
| 523 | Docril 523 | 46 |
| 524 | Docril 524 | 44 |
| 527 | Docril 527 | 50 |
| 528 | Docril 528 | 46 |
| 529 | Docril 529 | 44 |
| 545 | Docril 545 | 50 |
| 604 | Docril 604 | 44 |
| 630 | Docril 630 | 48 |
| 675 | Docril 675 | 20 |
| 1060 | Carbón | 10 |
| 1063 | Lagoon | 11 |
| 1065 | Cherry | 19 |
| 1066 | Logo Red | 17 |
| 1067 | Grape | 17 |
| 1068 | Coal | 19 |
| 1069 | Optik | 16 |
| 1070 | Mármol | 16 |
| 1071 | Sand | 18 |
| 1072 | Hormigón | 18 |
| 1073 | Rain | 19 |
| 1074 | Trigo | 19 |
| 1075 | Bambú | 19 |
| 1076 | Lava | 19 |
| 1079 | Commodore | 10 |
| 1467 | Tweed Perla | 11 |
| 1468 | Cereal | 11 |
| 1469 | Shell | 10 |
| 1470 | Toast | 11 |
| 1471 | Cactus | 11 |
| 1472 | Alamo | 10 |
| 1473 | Generation Red | 11 |
| 1479 | Ocean | 11 |
| 1480 | Apricot | 10 |
| 1481 | Chocolat | 10 |
| 1482 | Lima | 10 |
| 1488 | Berry | 11 |
| 1489 | Tropic | 10 |
| 1530 | Blanco | 15 |
| 1531 | Marfil | 15 |
| 1532 | Avena | 15 |
| 1533 | Siroco | 15 |
| 1534 | Apricot | 15 |

| REF. ▼ | NOMBRE / NAME / NOM | PÁG. |
|--------|---------------------|------|
| 1535 | Chocolat | 15 |
| 1536 | Toast | 15 |
| 1537 | Cactus | 15 |
| 1538 | Shell | 15 |
| 1539 | Carbón | 15 |
| 1540 | Marino | 15 |
| 1541 | Ocean | 15 |
| 1542 | Anís | 15 |
| 1543 | Botella | 15 |
| 1544 | Amarillo | 15 |
| 1545 | Brasserie | 15 |
| 1546 | Gris | 15 |
| 1547 | Perla | 15 |
| 1548 | Piedra | 15 |
| 1549 | Negro | 15 |
| 2005 | Arizona | 22 |
| 2008 | Derby | 41 |
| 2012 | Aneto | 31 |
| 2013 | Amarillo | 17 |
| 2015 | Amarillo N | 51 |
| 2016 | Argentina | 42 |
| 2018 | Azul | 18 |
| 2019 | Azul N | 53 |
| 2020 | Azul X | 53 |
| 2022 | Caramel | 16 |
| 2023 | Alaska | 25 |
| 2024 | Anís | 18 |
| 2025 | Confetti | 18 |
| 2027 | SR Azafrán | 59 |
| 2031 | Alsacia | 33 |
| 2038 | Beige | 16 |
| 2041 | Berna | 18 |
| 2042 | Blanco | 16 |
| 2047 | SR Coco | 59 |
| 2050 | Naranja | 17 |
| 2051 | Admiral | 18 |
| 2052 | Naranja N | 52 |
| 2061 | Canadá | 30 |
| 2063 | Capri | 27 |
| 2065 | Teja | 17 |
| 2066 | Celeste | 17 |
| 2075 | SR Siroco | 59 |
| 2080 | Dakar | 38 |
| 2083 | Dallas | 19 |
| 2085 | SR Tweed Negro | 59 |
| 2090 | Bronce | 19 |
| 2097 | Fresh | 18 |
| 2101 | Granate | 17 |
| 2102 | Gris | 18 |
| 2103 | Gris N | 55 |
| 2116 | Bombay | 17 |
| 2118 | Lila | 17 |
| 2119 | Malva | 17 |
| 2120 | Kenia | 55 |
| 2121 | Marte | 33 |
| 2125 | Everest | 35 |
| 2126 | Sol | 24 |
| 2128 | Tierra | 40 |
| 2129 | Turkis | 17 |
| 2134 | Lugano | 18 |
| 2141 | Maíz | 16 |
| 2142 | Mandarina | 17 |
| 2143 | Marfil | 16 |
| 2145 | Marino | 18 |
| 2146 | Marrón | 17 |
| 2148 | Marrón Beige | 54 |
| 2149 | Marrón N | 54 |
| 2151 | México | 24 |
| 2154 | Mónaco | 43 |
| 2165 | Marrón X | 54 |
| 2168 | Moncayo | 34 |
| 2170 | Negro | 18 |

| REF. ▼ | NOMBRE / NAME / NOM | PÁG. |
|--------|---------------------|------|
| 2171 | Negro N | 55 |
| 2174 | New York | 42 |
| 2175 | Napoli | 40 |
| 2176 | Nevada | 43 |
| 2179 | Plutón | 30 |
| 2180 | Ocre | 16 |
| 2183 | Ocre Marrón | 54 |
| 2191 | Orlando | 29 |
| 2200 | París | 42 |
| 2201 | Perú | 40 |
| 2205 | Praga | 26 |
| 2207 | Parma | 30 |
| 2209 | Brasserie | 17 |
| 2210 | Rioja | 17 |
| 2211 | Rojo | 17 |
| 2212 | Rojo N | 52 |
| 2220 | Sahara | 39 |
| 2221 | Salmón | 17 |
| 2223 | Siena | 34 |
| 2226 | Siroco | 19 |
| 2228 | Teide | 23 |
| 2230 | Tajo | 24 |
| 2231 | Támesis | 31 |
| 2233 | Topacio | 35 |
| 2235 | Azul Real | 17 |
| 2238 | Texas | 37 |
| 2242 | Verde | 18 |
| 2245 | Botella | 18 |
| 2246 | Verde Claro | 18 |
| 2247 | Musgo | 18 |
| 2248 | Verde N | 52 |
| 2249 | Verde X | 52 |
| 2250 | Visón | 16 |
| 2251 | Viena | 25 |
| 2255 | Zurich | 18 |
| 2274 | Arena | 16 |
| 2275 | Beige X | 54 |
| 2296 | Avena | 16 |
| 2316 | Café | 17 |
| 2322 | Crema | 16 |
| 2327 | Basalto | 18 |
| 2354 | Tenere | 19 |
| 2359 | Azul Real N | 53 |
| 2360 | Azul Real X | 53 |
| 2422 | SR Café | 59 |
| 2427 | Acquamarina | 18 |
| 2561 | Nebraska | 22 |
| 2562 | Alabama | 28 |
| 2563 | Georgia | 35 |
| 2564 | Curaçao | 29 |
| 2565 | Tahití | 25 |
| 2566 | Hawai | 36 |
| 2567 | Samoa | 31 |
| 2568 | Madeira | 40 |
| 2571 | Stuttgart | 29 |
| 2573 | Tauro | 23 |
| 2574 | Piscis | 27 |
| 2575 | Leo | 36 |
| 2576 | Aries | 28 |
| 2581 | Ítaca | 31 |
| 2596 | Seda | 16 |
| 2636 | Vesubio | 23 |
| 2640 | Anapurna | 41 |
| 2641 | Ocre X | 55 |
| 2659 | Venus | 27 |
| 2676 | Veleta | 27 |
| 2680 | Botella N | 52 |
| 2681 | Integral X | 53 |
| 2682 | Piedra X | 55 |
| 2687 | Vainilla | 16 |
| 2688 | Oro | 19 |
| 2690 | Cobre | 19 |

| REF. ▼ | NOMBRE / NAME / NOM | PÁG. |
|--------|---------------------|------|
| 2691 | Splendore | 19 |
| 2701 | Jamaica | 38 |
| 2702 | Miami | 26 |
| 2704 | Puerto Rico | 38 |
| 2777 | Brisa | 17 |
| 2790 | Pirineos | 38 |
| 2805 | Washington | 36 |
| 2806 | San Francisco | 22 |
| 2807 | Acuario | 32 |
| 2808 | Géminis | 34 |
| 2809 | Libra | 37 |
| 2815 | Copenhague | 39 |
| 2816 | Estocolmo | 29 |
| 2817 | Helsinki | 26 |
| 2818 | Oslo | 33 |
| 2820 | Néctar | 23 |
| 2821 | Silver | 18 |
| 2822 | Londres | 37 |
| 2823 | Manchester | 37 |
| 2825 | Azafrán | 16 |
| 2826 | ChamPÁG.ne | 16 |
| 2828 | Índigo | 17 |
| 2829 | Limón | 17 |
| 2830 | Melocotón | 17 |
| 2831 | Mineral | 18 |
| 2832 | Oliva | 18 |
| 2833 | Púrpura | 17 |
| 2834 | Toffee | 16 |
| 2835 | Pink | 17 |
| 2836 | Tomato | 17 |
| 2837 | Mostaza | 16 |
| 2838 | Integral | 19 |
| 2839 | Racing | 18 |
| 2892 | Jade | 18 |
| 2921 | Balmoral | 26 |
| 2924 | ST. Andrews | 39 |
| 2925 | Kansas | 39 |
| 2926 | Natural | 16 |
| 2928 | Tirol | 18 |
| 2929 | Windsor | 30 |
| 2930 | York | 24 |
| 2960 | Carnaval | 32 |
| 2962 | Patum | 34 |
| 2964 | Colonia | 42 |
| 2966 | Río | 35 |
| 2979 | Perla | 18 |
| 3000 | Eucaliptus | 19 |
| 3001 | Miel | 19 |
| 3002 | Regata | 19 |
| 3003 | Trufa | 19 |
| 3012 | África | 28 |
| 3013 | América | 32 |
| 3014 | Antártida | 41 |
| 3015 | Asia | 22 |
| 3016 | Europa | 28 |
| 3017 | Oceanía | 32 |
| 3019 | Cosmos | 33 |
| 3020 | Galaxy | 25 |
| 3021 | Luna | 41 |
| 3027 | Trekking | 36 |
| 3430 | Force Blanco | 60 |
| 3431 | Force Marfil | 60 |
| 3432 | Force Beige | 60 |
| 3433 | Force Caramel | 60 |
| 3434 | Force Tennere | 60 |
| 3435 | Force Granate | 60 |
| 3436 | Force Botella | 60 |
| 3437 | Force Marino | 60 |
| 3438 | Force Perla | 60 |
| 3439 | Force Basalto | 60 |
| 3440 | Force Antracita | 60 |
| 3441 | Force Negro | 60 |

| REF. ▼ | NOMBRE / NAME / NOM | PÁG. |
|--------------|----------------------|------|
| 3580 | Tweed Avena | 19 |
| 3581 | Tweed Gris Claro | 19 |
| 3582 | Tweed Negro | 19 |
| 3583 | Tweed Rojo | 19 |
| 3601 | Coco | 19 |
| 3602 | Grafito | 19 |
| 3603 | Gobi | 18 |
| 3605 | Piedra | 19 |
| 3608 | Urban | 43 |
| 3990 | Top FR Grafito | 61 |
| 3991 | Top FR Perla | 61 |
| 502V2-1125C | Azul Marino | 77 |
| 502V2-2012C | Pimienta | 76 |
| 502V2-20185C | Terracotta | 77 |
| 502V2-2135C | Beige Arena | 76 |
| 502V2-2137C | Marrón | 76 |
| 502V2-2138C | Hoja Otoñal | 76 |
| 502V2-2141C | Capuchino | 76 |
| 502V2-2148C | Chocolate | 76 |
| 502V2-2150C | Frambuesa | 77 |
| 502V2-2152C | Rojo Terciopelo | 76 |
| 502V2-2156C | Verde Botella | 77 |
| 502V2-2157C | Anís | 77 |
| 502V2-2158C | Verde Musgo | 77 |
| 502V2-2160C | Azul Lago | 77 |
| 502V2-2161C | Azul Noche | 77 |
| 502V2-2166C | Girasol | 76 |
| 502V2-2167C | Hormigón | 76 |
| 502V2-2168C | Alu | 76 |
| 502V2-2171C | Gris Claro | 76 |
| 502V2-2172C | Zanahoria | 77 |
| 502V2-50265C | Cáñamo | 76 |
| 502V2-50270C | Cardo | 77 |
| 502V2-50668C | Oliva | 77 |
| 502V2-50669C | Kaki | 76 |
| 502V2-50670C | Nenúfar | 77 |
| 502V2-50671C | Ocre | 76 |
| 502V2-50672C | Azul Tempestad | 77 |
| 502V2-50673C | Azul Oscuro | 77 |
| 502V2-50674C | Limón | 76 |
| 502V2-50675C | Celadón | 77 |
| 502V2-50676C | Azul Báltico | 77 |
| 502V2-50677C | Azur | 77 |
| 502V2-8056C | Verde Tenis | 77 |
| 502V2-8102C | Blanco | 76 |
| 502V2-8204C | Naranja | 76 |
| 502V2-8255C | Rojo | 77 |
| 502V2-8284C | Burdeos | 77 |
| 502V2-8341C | ChamPÁG.ne | 76 |
| 502V2-8450C | Negro | 76 |
| 502V2-8861C | Arena | 76 |
| 6141 | Negro RAL 9005 | 65 |
| 6169 | Azul Claro RAL 5005 | 65 |
| 6175 | Gris Claro RAL 7038 | 65 |
| 6176 | Verde RAL 6026 | 64 |
| 6197 | Azul Oscuro RAL 5002 | 65 |
| 622-50537 | White | 75 |
| 622-50539 | Beige | 75 |
| 622-50542 | Grey | 75 |
| 6300 | Arena | 66 |
| 6301 | Mica RAL 1035 | 66 |
| 6302 | Violeta RAL 4005 | 67 |
| 6303 | Coral | 67 |
| 6304 | Anís | 67 |
| 6305 | Teja | 66 |
| 6306 | Antracita RAL 7016 | 67 |
| 6307 | Brisa | 67 |
| 6308 | Mostaza | 66 |
| 6651 | Blanco | 66 |
| 6652 | Marfil RAL 1013 | 66 |
| 6653 | Beige | 66 |
| 6654 | Amarillo Pastel | 66 |

| REF. ▼ | NOMBRE / NAME / NOM | PÁG. |
|---------|----------------------|------|
| 6655 | Limón RAL 1021 | 66 |
| 6656 | Amarillo RAL 1003 | 66 |
| 6658 | Naranja RAL 2004 | 66 |
| 6659 | Rubi RAL 3002 | 66 |
| 6660 | Granate RAL 3005 | 66 |
| 6661 | Rosa | 67 |
| 6662 | Fucsia RAL 4006 | 67 |
| 6663 | Mar RAL 5015 | 67 |
| 6664 | Azul Oscuro RAL 5002 | 67 |
| 6665 | Marino RAL 5013 | 67 |
| 6667 | Hierba RAL 6001 | 67 |
| 6668 | Verde RAL 6026 | 67 |
| 6669 | Musgo RAL 6005 | 67 |
| 6670 | Silver RAL 7047 | 67 |
| 6671 | Gris Oscuro RAL 7037 | 67 |
| 6672 | Metal | 66 |
| 6674 | Negro RAL 9005 | 67 |
| 6675 | Verde Claro RAL 6018 | 67 |
| 6677 | ChamPÁG.ne RAL 1015 | 66 |
| 6678 | Avena | 66 |
| 6679 | Coyote | 66 |
| 6682 | Marrón RAL 8014 | 66 |
| 6683 | Cobre | 66 |
| 6684 | Azafrán | 66 |
| 6685 | Sky | 67 |
| 6686 | Acqua | 67 |
| 6805 | Marino RAL 5013 | 65 |
| 6879 | Fresh | 67 |
| 6971 | Musgo RAL 6005 | 65 |
| 6973 | Mar RAL 5015 | 65 |
| 6976 | Marrón RAL 8014 | 65 |
| 6978 | Gris Oscuro RAL 7037 | 65 |
| 8157 | Alabastro | 16 |
| 8265 | SR Amarillo | 59 |
| 8266 | SR Azul | 59 |
| 8267 | SR Beige | 59 |
| 8268 | SR Blanco | 59 |
| 8269 | SR Botella | 59 |
| 8270 | SR Granate | 59 |
| 8271 | SR Gris | 59 |
| 8272 | SR Marfil | 59 |
| 8273 | SR Marino | 59 |
| 8274 | SR Naranja | 59 |
| 8275 | SR Negro | 59 |
| 8276 | SR Azul Real | 59 |
| 8277 | SR Rojo | 59 |
| 8278 | SR Seda | 59 |
| 8279 | SR Teja | 59 |
| 8280 | SR Verde | 59 |
| 8441 | Tándem Sand | 56 |
| 8442 | Tándem Blanco | 56 |
| 8443 | Tándem Marfil | 56 |
| 8444 | Tándem Integral | 56 |
| 8445 | Tándem Piedra | 56 |
| 8446 | Tándem Grafito | 56 |
| 8447 | Tándem Lavanda | 56 |
| 8448 | Tándem Marino | 56 |
| 8449 | Tándem Grape | 56 |
| 8450 | Tándem Botella | 56 |
| 8451 | Tándem Granate | 56 |
| 8452 | Tándem Beige | 56 |
| 8453 | Tándem Integral 5x5 | 57 |
| 8454 | Tándem Grape 5x5 | 57 |
| 8455 | Tándem Marino 5x5 | 57 |
| 8456 | Tándem Botella 5x5 | 57 |
| 8457 | Tándem Granate 5x5 | 57 |
| 8458 | Tándem Grafito 5x5 | 57 |
| 8488 | Antracita | 18 |
| 8573 | Tweed Verde | 19 |
| 8645 | Terracota | 17 |
| 86-2012 | Pimienta | 70 |
| 86-2043 | Bronce | 70 |

| REF. ▼ | NOMBRE / NAME / NOM | PÁG. |
|----------|---------------------|------|
| 86-2044 | Blanco | 70 |
| 86-2045 | Metal Amartillado | 70 |
| 86-2046 | Alu/Crudo | 70 |
| 86-2047 | Antracita | 70 |
| 86-2048 | Alu/Alu | 70 |
| 86-2051 | Alu/Blanco | 70 |
| 86-2053 | Negro | 70 |
| 86-2068 | Alu/Antracita | 70 |
| 86-2135 | Beige Arena | 70 |
| 86-2148 | Chocolate | 70 |
| 86-2158 | Verde Musgo | 70 |
| 86-2161 | Azul Noche | 70 |
| 86-2166 | Girasol | 70 |
| 86-2167 | Hormigón | 70 |
| 86-2171 | Gris Claro | 70 |
| 86-2175 | ChamPÁG.ne | 70 |
| 86-50260 | Moscotel | 70 |
| 86-50261 | Caramelo | 70 |
| 86-50333 | Bambú | 70 |
| 86-8204 | Naranja | 70 |
| 86-8255 | Rojo | 70 |
| 8785 | Lavanda | 17 |
| 88-2012 | Pimienta | 71 |
| 88-2043 | Bronce | 71 |
| 88-2044 | Blanco | 71 |
| 88-2047 | Antracita | 71 |
| 88-2048 | Alu/Alu | 71 |
| 88-2053 | Negro | 71 |
| 88-2135 | Beige Arena | 71 |
| 88-2167 | Hormigón | 71 |
| 88-2171 | Gris Claro | 71 |
| 88-2175 | ChamPÁG.ne | 71 |
| 88-50265 | Cáñamo | 71 |
| 88-50306 | Bermudas | 71 |
| 88-50308 | Paprika | 71 |
| 88-50329 | Marrón Ceniza | 71 |
| 88-50332 | Albaricoque | 71 |
| 88-50333 | Bambú | 71 |
| 88-50335 | Breva | 71 |
| 8980 | Top FR Blanco | 61 |
| 8981 | Top FR Botella | 61 |
| 8984 | Top FR Amarillo | 61 |
| 8985 | Top FR Beige | 61 |
| 8986 | Top FR Granate | 61 |
| 8987 | Top FR Gris | 61 |
| 8988 | Top FR Marfil | 61 |
| 8989 | Top FR Marino | 61 |
| 8990 | Top FR Negro | 61 |
| 8991 | Top FR Azul Real | 61 |
| 8992 | Top FR Silver | 61 |
| 92-2012 | Pimienta | 72 |
| 92-2013 | Amarillo Medio | 73 |
| 92-2039 | Verde Abeto | 73 |
| 92-2043 | Bronce | 72 |
| 92-2044 | Blanco | 72 |
| 92-2045 | Metal Amartillado | 72 |
| 92-2046 | Alu/Crudo | 72 |
| 92-2047 | Antracita | 72 |
| 92-2048 | Alu/Alu | 72 |
| 92-2051 | Alu/Blanco | 72 |
| 92-2053 | Negro | 72 |
| 92-2065 | Gris Interferencial | 72 |
| 92-2068 | Alu/Antracita | 72 |
| 92-2074 | Alu/Gris Medio | 72 |
| 92-2135 | Beige Arena | 72 |
| 92-2137 | Marrón | 72 |
| 92-2148 | Chocolate | 72 |
| 92-2149 | Coleóptero | 72 |
| 92-2152 | Rojo Terciopelo | 73 |
| 92-2157 | Anís | 73 |
| 92-2158 | Verde Musgo | 72 |
| 92-2160 | Azul Lago | 73 |

| REF. ▼ | NOMBRE / NAME / NOM | PÁG. |
|-------------|---------------------|------|
| 92-2161 | Azul Noche | 73 |
| 92-2163 | Malva | 73 |
| 92-2164 | Lavanda | 73 |
| 92-2166 | Girasol | 73 |
| 92-2167 | Hormigón | 72 |
| 92-2171 | Gris Claro | 72 |
| 92-2172 | Zanahoria | 73 |
| 92-2175 | ChamPÁG.ne | 72 |
| 92-50260 | Moscotel | 73 |
| 92-50261 | Caramelo | 73 |
| 92-50264 | Petróleo | 73 |
| 92-50265 | Cáñamo | 72 |
| 92-50266 | Habana | 72 |
| 92-50267 | Terracota | 73 |
| 92-50268 | Granadina | 73 |
| 92-50269 | Hawai | 73 |
| 92-50270 | Cardo | 73 |
| 92-50271 | Turquesa Intenso | 73 |
| 92-50272 | Nube | 72 |
| 92-50273 | Oro | 72 |
| 92-50274 | Cobre | 73 |
| 92-50333 | Bambú | 73 |
| 92-50336 | Ciruella | 73 |
| 92-50342 | Azul Marino | 73 |
| 92-8204 | Naranja | 73 |
| 92-8255 | Rojo | 73 |
| 96-1103 | Blanco Roto | 74 |
| 96-2043 | Bronce | 74 |
| 96-2047 | Antracita | 74 |
| 96-2135 | Beige Arena | 74 |
| 96-2161 | Azul Noche | 74 |
| 96-2171 | Piedra | 74 |
| 96-50261 | Caramelo | 74 |
| 96-50272 | Nube | 74 |
| 96-50843 | Karité | 74 |
| 96-50844 | Platino | 74 |
| 96-50845 | Aureolina | 74 |
| 96-50846 | Cítrico | 74 |
| 96-50847 | Acapulco | 74 |
| 96-50848 | Tilo | 74 |
| 96-50849 | Jungla | 74 |
| 96-50850 | Topo | 74 |
| 96-50851 | Atlántida | 74 |
| 96-8102 | Blanco | 74 |
| 96-8255 | Rojo | 74 |
| 96-8450 | Negro | 74 |
| 96-8861 | Arena | 74 |
| B92-1043 | Bronce | 78 |
| B92-1044 | Blanco | 78 |
| B92-1045 | Metal Amartillado | 78 |
| B92-1046 | Alu | 78 |
| B92-2135 | Beige Arena | 78 |
| B92-2171 | Gris Claro | 78 |
| BRA1L | Brasil 1 | 58 |
| BRA2L | Brasil 2 | 58 |
| ECV2L | Ecuador 2 | 58 |
| F5390-1103 | Blanco Roto | 79 |
| F5390-2047 | Antracita | 79 |
| F5390-2135 | Beige Arena | 79 |
| F5390-2171 | Piedra | 79 |
| F5390-50272 | Nube | 79 |
| F5390-50843 | Karité | 79 |
| F5390-50844 | Platino | 79 |
| F5390-50850 | Topo | 79 |
| F5390-8102 | Blanco | 79 |
| F5390-8861 | Vainilla | 79 |
| PAVAL | Paradis | 58 |
| W96-1103 | Blanco roto | 78 |
| W96-2047 | Antracita | 78 |
| W96-2171 | Nube | 78 |
| W96-8102 | Blanco | 78 |
| W96-8861 | Vainilla | 78 |

| NOMBRE / NAME / NOM ▼ | REF. | PÁG. |
|-----------------------|--------------|------|
| Acapulco | 96-50847 | 74 |
| Acqua | 6686 | 67 |
| Acquamarina | 2427 | 18 |
| Acuario | 2807 | 32 |
| Admiral | 2051 | 18 |
| África | 3012 | 28 |
| Alabama | 2562 | 28 |
| Alabastro | 8157 | 16 |
| Alamo | 1472 | 10 |
| Alaska | 2023 | 25 |
| Albaricoque | 88-50332 | 71 |
| Alsacia | 2031 | 33 |
| Alu | 502V2-2168C | 76 |
| Alu | B92-1046 | 78 |
| Alu/Alu | 86-2048 | 70 |
| Alu/Alu | 88-2048 | 71 |
| Alu/Alu | 92-2048 | 72 |
| Alu/Antracita | 86-2068 | 70 |
| Alu/Antracita | 92-2068 | 72 |
| Alu/Blanco | 86-2051 | 70 |
| Alu/Blanco | 92-2051 | 72 |
| Alu/Crudo | 86-2046 | 70 |
| Alu/Crudo | 92-2046 | 72 |
| Alu/Gris medio | 92-2074 | 72 |
| Amarillo | 1544 | 15 |
| Amarillo | 2013 | 17 |
| Amarillo Medio | 92-2013 | 73 |
| Amarillo N | 2015 | 51 |
| Amarillo Pastel | 6654 | 66 |
| Amarillo RAL 1003 | 6656 | 66 |
| América | 3013 | 32 |
| Anapurna | 2640 | 41 |
| Aneto | 2012 | 31 |
| Anís | 1542 | 15 |
| Anís | 2024 | 18 |
| Anís | 502V2-2157C | 77 |
| Anís | 6304 | 67 |
| Anís | 92-2157 | 73 |
| Antártida | 3014 | 41 |
| Antracita RAL 7016 | 6306 | 67 |
| Antracita | 8488 | 18 |
| Antracita | 86-2047 | 70 |
| Antracita | 88-2047 | 71 |
| Antracita | 92-2047 | 72 |
| Antracita | 96-2047 | 74 |
| Antracita | F5390-2047 | 79 |
| Antracita | W96-2047 | 78 |
| Apricot | 1480 | 10 |
| Apricot | 1534 | 15 |
| Arena | 2274 | 16 |
| Arena | 502V2-8861C | 76 |
| Arena | 6300 | 66 |
| Arena | 96-8861 | 74 |
| Argentina | 2016 | 42 |
| Aries | 2576 | 28 |
| Arizona | 2005 | 22 |
| Asia | 3015 | 22 |
| Atlántida | 96-50851 | 74 |
| Aureolina | 96-50845 | 74 |
| Avena | 1532 | 15 |
| Avena | 2296 | 16 |
| Avena | 6678 | 66 |
| Azafrán | 2825 | 16 |
| Azafrán | 6684 | 66 |
| Azul | 2018 | 18 |
| Azul Báltico | 502V2-50676C | 77 |
| Azul Claro RAL 5005 | 6169 | 65 |
| Azul Lago | 92-2160 | 73 |
| Azul Lago | 502V2-2160C | 77 |
| Azul Marino | 502V2-1125C | 77 |
| Azul Marino | 92-50342 | 73 |
| Azul N | 2019 | 53 |

| NOMBRE / NAME / NOM ▼ | REF. | PÁG. |
|-----------------------|--------------|------|
| Azul Noche | 502V2-2161C | 77 |
| Azul Noche | 86-2161 | 70 |
| Azul Noche | 92-2161 | 73 |
| Azul Noche | 96-2161 | 74 |
| Azul Oscuro RAL 5002 | 6197 | 65 |
| Azul Oscuro | 502V2-50673C | 77 |
| Azul Oscuro RAL 5002 | 6664 | 67 |
| Azul Real | 2235 | 17 |
| Azul Real N | 2359 | 53 |
| Azul Real X | 2360 | 53 |
| Azul Tempestad | 502V2-50672C | 77 |
| Azul X | 2020 | 53 |
| Azur | 502V2-50677C | 77 |
| Balmoral | 2921 | 26 |
| Bambú | 1075 | 19 |
| Bambú | 86-50333 | 70 |
| Bambú | 88-50333 | 71 |
| Bambú | 92-50333 | 73 |
| Basalto | 2327 | 18 |
| Beige | 2038 | 16 |
| Beige | 622-50539 | 75 |
| Beige | 6653 | 66 |
| Beige Arena | 502V2-2135C | 76 |
| Beige Arena | 86-2135 | 70 |
| Beige Arena | 88-2135 | 71 |
| Beige Arena | 92-2135 | 72 |
| Beige Arena | 96-2135 | 74 |
| Beige Arena | B92-2135 | 78 |
| Beige Arena | F5390-2135 | 79 |
| Beige X | 2275 | 54 |
| Bermudas | 88-50306 | 71 |
| Berna | 2041 | 18 |
| Berry | 1488 | 11 |
| Blanco | 1530 | 15 |
| Blanco | 2042 | 16 |
| Blanco | 502V2-8102C | 76 |
| Blanco | 6651 | 66 |
| Blanco | 86-2044 | 70 |
| Blanco | 88-2044 | 71 |
| Blanco | 92-2044 | 72 |
| Blanco | 96-8102 | 74 |
| Blanco | B92-1044 | 78 |
| Blanco | F5390-8102 | 79 |
| Blanco | W96-8102 | 78 |
| Blanco Roto | 96-1103 | 74 |
| Blanco Roto | F5390-1103 | 79 |
| Blanco Roto | W96-1103 | 78 |
| Bombay | 2116 | 17 |
| Botella | 1543 | 15 |
| Botella | 2245 | 18 |
| Botella N | 2680 | 52 |
| Brasil 1 | BRA1L | 58 |
| Brasil 2 | BRA2L | 58 |
| Brasserie | 1545 | 15 |
| Brasserie | 2209 | 17 |
| Breva | 88-50335 | 71 |
| Brisa | 2777 | 17 |
| Brisa | 6307 | 67 |
| Bronce | 2090 | 19 |
| Bronce | 86-2043 | 70 |
| Bronce | 88-2043 | 71 |
| Bronce | 92-2043 | 72 |
| Bronce | 96-2043 | 74 |
| Bronce | B92-1043 | 78 |
| Burdeos | 502V2-8284C | 77 |
| Cactus | 1471 | 11 |
| Cactus | 1537 | 15 |
| Café | 2316 | 17 |
| Canadá | 2061 | 30 |
| Cáñamo | 502V2-50265C | 76 |
| Cáñamo | 88-50265 | 71 |
| Cáñamo | 92-50265 | 72 |

| NOMBRE / NAME / NOM ▼ | REF. | PÁG. |
|-----------------------|--------------|------|
| Capri | 2063 | 27 |
| Capuchino | 502V2-2141C | 76 |
| Caramel | 2022 | 16 |
| Caramelo | 86-50261 | 70 |
| Caramelo | 92-50261 | 73 |
| Caramelo | 96-50261 | 74 |
| Carbón | 1060 | 10 |
| Carbón | 1539 | 15 |
| Cardo | 502V2-50270C | 77 |
| Cardo | 92-50270 | 73 |
| Carnaval | 2960 | 32 |
| Celadón | 502V2-50675C | 77 |
| Celeste | 2066 | 17 |
| Cereal | 1468 | 11 |
| ChampÁG.ne | 2826 | 16 |
| ChampÁG.ne | 502V2-8341C | 76 |
| ChampÁG.ne | 86-2175 | 70 |
| ChampÁG.ne | 88-2175 | 71 |
| ChampÁG.ne | 92-2175 | 72 |
| ChampÁG.ne RAL 1015 | 6677 | 66 |
| Cherry | 1065 | 19 |
| Chocolat | 1481 | 10 |
| Chocolat | 1535 | 15 |
| Chocolate | 502V2-2148C | 76 |
| Chocolate | 86-2148 | 70 |
| Chocolate | 92-2148 | 72 |
| Ciruela | 92-50336 | 73 |
| Cítrico | 96-50846 | 74 |
| Coal | 1068 | 19 |
| Cobre | 2690 | 19 |
| Cobre | 6683 | 66 |
| Cobre | 92-50274 | 73 |
| Coco | 3601 | 19 |
| Coleóptero | 92-2149 | 72 |
| Colonia | 2964 | 42 |
| Commodore | 1079 | 10 |
| Confetti | 2025 | 18 |
| Copenhague | 2815 | 39 |
| Coral | 6303 | 67 |
| Cosmos | 3019 | 33 |
| Coyote | 6679 | 66 |
| Crema | 2322 | 16 |
| Curaçao | 2564 | 29 |
| Dakar | 2080 | 38 |
| Dallas | 2083 | 19 |
| Derby | 2008 | 41 |
| Docril 002 | 002 | 20 |
| Docril 037 | 037 | 20 |
| Docril 060 | 060 | 20 |
| Docril 067 | 067 | 20 |
| Docril 080 | 080 | 20 |
| Docril 086 | 086 | 20 |
| Docril 098 | 098 | 20 |
| Docril 101 | 101 | 20 |
| Docril 113 | 113 | 20 |
| Docril 140 | 140 | 48 |
| Docril 152 | 152 | 50 |
| Docril 153 | 153 | 45 |
| Docril 164 | 164 | 45 |
| Docril 171 | 171 | 46 |
| Docril 197 | 197 | 20 |
| Docril 331 | 331 | 47 |
| Docril 336 | 336 | 45 |
| Docril 360 | 360 | 48 |
| Docril 362 | 362 | 47 |
| Docril 364 | 364 | 47 |
| Docril 368 | 368 | 49 |
| Docril 369 | 369 | 49 |
| Docril 506 | 506 | 48 |
| Docril 509 | 509 | 44 |
| Docril 510 | 510 | 47 |
| Docril 511 | 511 | 49 |

| NOMBRE / NAME / NOM ▼ | REF. | PÁG. |
|-----------------------|-------------|------|
| Docril 512 | 512 | 50 |
| Docril 515 | 515 | 49 |
| Docril 517 | 517 | 45 |
| Docril 521 | 521 | 46 |
| Docril 523 | 523 | 46 |
| Docril 524 | 524 | 44 |
| Docril 527 | 527 | 50 |
| Docril 528 | 528 | 46 |
| Docril 529 | 529 | 44 |
| Docril 545 | 545 | 50 |
| Docril 604 | 604 | 44 |
| Docril 630 | 630 | 48 |
| Docril 675 | 675 | 20 |
| Ecuador 2 | ECV2L | 58 |
| Estocolmo | 2816 | 29 |
| Eucaliptus | 3000 | 19 |
| Europa | 3016 | 28 |
| Everest | 2125 | 35 |
| Force Antracita | 3440 | 60 |
| Force Basalto | 3439 | 60 |
| Force Beige | 3432 | 60 |
| Force Blanco | 3430 | 60 |
| Force Botella | 3436 | 60 |
| Force Caramel | 3433 | 60 |
| Force Granate | 3435 | 60 |
| Force Marfil | 3431 | 60 |
| Force Marino | 3437 | 60 |
| Force Negro | 3441 | 60 |
| Force Perla | 3438 | 60 |
| Force Tennere | 3434 | 60 |
| Frambuesa | 502V2-2150C | 77 |
| Fresh | 2097 | 18 |
| Fresh | 6879 | 67 |
| Fucsia RAL 4006 | 6662 | 67 |
| Galaxy | 3020 | 25 |
| Géminis | 2808 | 34 |
| Generation Red | 1473 | 11 |
| Georgia | 2563 | 35 |
| Girasol | 502V2-2166C | 76 |
| Girasol | 86-2166 | 70 |
| Girasol | 92-2166 | 73 |
| Gobi | 3603 | 18 |
| Grafito | 3602 | 19 |
| Granadina | 92-50268 | 73 |
| Granate | 2101 | 17 |
| Granate RAL 3005 | 6660 | 66 |
| Grape | 1067 | 17 |
| Grey | 622-50542 | 75 |
| Gris | 1546 | 15 |
| Gris | 2102 | 18 |
| Gris Claro RAL 7038 | 6175 | 65 |
| Gris Claro | 502V2-2171C | 76 |
| Gris Claro | 86-2171 | 70 |
| Gris Claro | 88-2171 | 71 |
| Gris Claro | 92-2171 | 72 |
| Gris Claro | B92-2171 | 78 |
| Gris Interferencial | 92-2065 | 72 |
| Gris N | 2103 | 55 |
| Gris Oscuro RAL 7037 | 6978 | 65 |
| Gris Oscuro RAL 7037 | 6671 | 67 |
| Habana | 92-50266 | 72 |
| Hawai | 2566 | 36 |
| Hawai | 92-50269 | 73 |
| Helsinki | 2817 | 26 |
| Hierba RAL 6001 | 6667 | 67 |
| Hoja otoñal | 502V2-2138C | 76 |
| Hormigón | 1072 | 18 |
| Hormigón | 502V2-2167C | 76 |
| Hormigón | 86-2167 | 70 |
| Hormigón | 88-2167 | 71 |
| Hormigón | 92-2167 | 72 |
| Índigo | 2828 | 17 |

| NOMBRE / NAME / NOM ▼ | REF. | PÁG. |
|-----------------------|--------------|------|
| Integral | 2838 | 19 |
| Integral X | 2681 | 53 |
| Ítaca | 2581 | 31 |
| Jade | 2892 | 18 |
| Jamaica | 2701 | 38 |
| Jungla | 96-50849 | 74 |
| Kaki | 502V2-50669C | 76 |
| Kansas | 2925 | 39 |
| Karité | 96-50843 | 74 |
| Karité | F5390-50843 | 79 |
| Kenia | 2120 | 55 |
| Lagoon | 1063 | 11 |
| Lava | 1076 | 19 |
| Lavanda | 8785 | 17 |
| Lavanda | 92-2164 | 73 |
| Leo | 2575 | 36 |
| Libra | 2809 | 37 |
| Lila | 2118 | 17 |
| Lima | 1482 | 10 |
| Limón | 2829 | 17 |
| Limón | 502V2-50674C | 76 |
| Limón RAL 1021 | 6655 | 66 |
| Logo Red | 1066 | 17 |
| Londres | 2822 | 37 |
| Lugano | 2134 | 18 |
| Luna | 3021 | 41 |
| Madeira | 2568 | 40 |
| Maíz | 2141 | 16 |
| Malva | 2119 | 17 |
| Malva | 92-2163 | 73 |
| Manchester | 2823 | 37 |
| Mandarina | 2142 | 17 |
| Mar RAL 5015 | 6663 | 67 |
| Mar RAL 5015 | 6973 | 65 |
| Marfil | 1531 | 15 |
| Marfil | 2143 | 16 |
| Marfil RAL 1013 | 6652 | 66 |
| Marino | 1540 | 15 |
| Marino | 2145 | 18 |
| Marino RAL 5013 | 6665 | 67 |
| Marino RAL 5013 | 6805 | 65 |
| Mármol | 1070 | 16 |
| Marrón | 2146 | 17 |
| Marrón | 502V2-2137C | 76 |
| Marrón | 92-2137 | 72 |
| Marrón Beige | 2148 | 54 |
| Marrón Ceniza | 88-50329 | 71 |
| Marrón N | 2149 | 54 |
| Marrón RAL 8014 | 6682 | 66 |
| Marrón RAL 8014 | 6976 | 65 |
| Marrón X | 2165 | 54 |
| Marte | 2121 | 33 |
| Melocotón | 2830 | 17 |
| Metal | 6672 | 66 |
| Metal Amartillado | 86-2045 | 70 |
| Metal Amartillado | 92-2045 | 72 |
| Metal Amartillado | B92-1045 | 78 |
| México | 2151 | 24 |
| Miami | 2702 | 26 |
| Mica RAL 1035 | 6301 | 66 |
| Miel | 3001 | 19 |
| Míneral | 2831 | 18 |
| Mónaco | 2154 | 43 |
| Moncayo | 2168 | 34 |
| Moscatel | 86-50260 | 70 |
| Moscatel | 92-50260 | 73 |
| Mostaza | 2837 | 16 |
| Mostaza | 6308 | 66 |
| Musgo | 2247 | 18 |
| Musgo RAL 6005 | 6669 | 67 |
| Musgo RAL 6005 | 6971 | 65 |
| Napoli | 2175 | 40 |

| NOMBRE / NAME / NOM ▼ | REF. | PÁG. |
|-----------------------|--------------|------|
| Naranja | 2050 | 17 |
| Naranja | 502V2-8204C | 76 |
| Naranja | 86-8204 | 70 |
| Naranja | 92-8204 | 73 |
| Naranja N | 2052 | 52 |
| Naranja RAL 2004 | 6658 | 66 |
| Natural | 2926 | 16 |
| Nebraska | 2561 | 22 |
| Néctar | 2820 | 23 |
| Negro | 1549 | 15 |
| Negro | 2170 | 18 |
| Negro | 502V2-8450C | 76 |
| Negro | 86-2053 | 70 |
| Negro | 88-2053 | 71 |
| Negro | 92-2053 | 72 |
| Negro | 96-8450 | 74 |
| Negro N | 2171 | 55 |
| Negro RAL 9005 | 6141 | 65 |
| Negro RAL 9005 | 6674 | 67 |
| Nenúfar | 502V2-50670C | 77 |
| Nevada | 2176 | 43 |
| New York | 2174 | 42 |
| Nube | 92-50272 | 72 |
| Nube | 96-50272 | 74 |
| Nube | W96-2171 | 78 |
| Nube | F5390-50272 | 79 |
| Ocean | 1479 | 11 |
| Ocean | 1541 | 15 |
| Oceania | 3017 | 32 |
| Ocre | 2180 | 16 |
| Ocre | 502V2-50671C | 76 |
| Ocre Marrón | 2183 | 54 |
| Ocre X | 2641 | 55 |
| Oliva | 2832 | 18 |
| Oliva | 502V2-50668C | 77 |
| Optik | 1069 | 16 |
| Orlando | 2191 | 29 |
| Oro | 2688 | 19 |
| Oro | 92-50273 | 72 |
| Oslo | 2818 | 33 |
| Paprika | 88-50308 | 71 |
| Paradis | PAVAL | 58 |
| París | 2200 | 42 |
| Parma | 2207 | 30 |
| Patum | 2962 | 34 |
| Perla | 1547 | 15 |
| Perla | 2979 | 18 |
| Perú | 2201 | 40 |
| Petróleo | 92-50264 | 73 |
| Piedra | 1548 | 15 |
| Piedra | 3605 | 19 |
| Piedra | 96-2171 | 74 |
| Piedra | F5390-2171 | 79 |
| Piedra X | 2682 | 55 |
| Pimienta | 502V2-2012C | 76 |
| Pimienta | 86-2012 | 70 |
| Pimienta | 88-2012 | 71 |
| Pimienta | 92-2012 | 72 |
| Pink | 2835 | 17 |
| Pirineos | 2790 | 38 |
| Piscis | 2574 | 27 |
| Platino | 96-50844 | 74 |
| Platino | F5390-50844 | 79 |
| Plutón | 2179 | 30 |
| Praga | 2205 | 26 |
| Puerto Rico | 2704 | 38 |
| Púrpura | 2833 | 17 |
| Racing | 2839 | 18 |
| Rain | 1073 | 19 |
| Regata | 3002 | 19 |
| Río | 2966 | 35 |
| Rioja | 2210 | 17 |

| NOMBRE / NAME / NOM ▼ | REF. | PÁG. |
|-----------------------|-------------|------|
| Rojo | 2211 | 17 |
| Rojo | 502V2-8255C | 77 |
| Rojo | 86-8255 | 70 |
| Rojo | 92-8255 | 73 |
| Rojo | 96-8255 | 74 |
| Rojo N | 2212 | 52 |
| Rojo Terciopelo | 502V2-2152C | 76 |
| Rojo Terciopelo | 92-2152 | 73 |
| Rosa | 6661 | 67 |
| Rubí RAL 3002 | 6659 | 66 |
| Sahara | 2220 | 39 |
| Salmón | 2221 | 17 |
| Samoa | 2567 | 31 |
| San Francisco | 2806 | 22 |
| Sand | 1071 | 18 |
| Seda | 2596 | 16 |
| Shell | 1469 | 10 |
| Shell | 1538 | 15 |
| Siena | 2223 | 34 |
| Silver | 2821 | 18 |
| Silver RAL 7047 | 6670 | 67 |
| Siroco | 1533 | 15 |
| Siroco | 2226 | 19 |
| Sky | 6685 | 67 |
| Sol | 2126 | 24 |
| Splendore | 2691 | 19 |
| SR Amarillo | 8265 | 59 |
| SR Azafrán | 2027 | 59 |
| SR Azul | 8266 | 59 |
| SR Azul Real | 8276 | 59 |
| SR Beige | 8267 | 59 |
| SR Blanco | 8268 | 59 |
| SR Botella | 8269 | 59 |
| SR Café | 2422 | 59 |
| SR Coco | 2047 | 59 |
| SR Granate | 8270 | 59 |
| SR Gris | 8271 | 59 |
| SR Marfil | 8272 | 59 |
| SR Marino | 8273 | 59 |
| SR Naranja | 8274 | 59 |
| SR Negro | 8275 | 59 |
| SR Rojo | 8277 | 59 |
| SR Seda | 8278 | 59 |
| SR Siroco | 2075 | 59 |
| SR Teja | 8279 | 59 |
| SR Tweed Negro | 2085 | 59 |
| SR Verde | 8280 | 59 |
| ST. Andrews | 2924 | 39 |
| Stuttgart | 2571 | 29 |
| Tahití | 2565 | 25 |
| Tajo | 2230 | 24 |
| Támesis | 2231 | 31 |
| Tándem Beige | 8452 | 56 |
| Tándem Blanco | 8442 | 56 |
| Tándem Botella | 8450 | 56 |
| Tándem Botella 5x5 | 8456 | 57 |
| Tándem Grafito | 8446 | 56 |
| Tándem Grafito 5x5 | 8458 | 57 |
| Tándem Granate | 8451 | 56 |
| Tándem Granate 5x5 | 8457 | 57 |
| Tándem Grape | 8449 | 56 |
| Tándem Grape 5x5 | 8454 | 57 |
| Tándem Integral | 8444 | 56 |
| Tándem Integral 5x5 | 8453 | 57 |
| Tándem Lavanda | 8447 | 56 |
| Tándem Marfil | 8443 | 56 |
| Tándem Marino | 8448 | 56 |
| Tándem Marino 5x5 | 8455 | 57 |
| Tándem Piedra | 8445 | 56 |
| Tándem Sand | 8441 | 56 |
| Tauro | 2573 | 23 |
| Teide | 2228 | 23 |

| NOMBRE / NAME / NOM ▼ | REF. | PÁG. |
|-----------------------|--------------|------|
| Teja | 2065 | 17 |
| Teja | 6305 | 66 |
| Tenere | 2354 | 19 |
| Terracota | 8645 | 17 |
| Terracotta | 502V2-20185C | 77 |
| Terracota | 92-50267 | 73 |
| Texas | 2238 | 37 |
| Tierra | 2128 | 40 |
| Tiilo | 96-50848 | 74 |
| Tirol | 2928 | 18 |
| Toast | 1470 | 11 |
| Toast | 1536 | 15 |
| Toffee | 2834 | 16 |
| Tomato | 2836 | 17 |
| Top FR Amarillo | 8984 | 61 |
| Top FR Azul Real | 8991 | 61 |
| Top FR Beige | 8985 | 61 |
| Top FR Blanco | 8980 | 61 |
| Top FR Botella | 8981 | 61 |
| Top FR Grafito | 3990 | 61 |
| Top FR Granate | 8986 | 61 |
| Top FR Gris | 8987 | 61 |
| Top FR Marfil | 8988 | 61 |
| Top FR Marino | 8989 | 61 |
| Top FR Negro | 8990 | 61 |
| Top FR Perla | 3991 | 61 |
| Top FR Silver | 8992 | 61 |
| Topacio | 2233 | 35 |
| Topo | 96-50850 | 74 |
| Topo | F5390-50850 | 79 |
| Trekking | 3027 | 36 |
| Trigo | 1074 | 19 |
| Tropic | 1489 | 10 |
| Trufa | 3003 | 19 |
| Turkis | 2129 | 17 |
| Turquesa Intenso | 92-50271 | 73 |
| Tweed Avena | 3580 | 19 |
| Tweed Gris Claro | 3581 | 19 |
| Tweed Negro | 3582 | 19 |
| Tweed Perla | 1467 | 11 |
| Tweed Rojo | 3583 | 19 |
| Tweed Verde | 8573 | 19 |
| Urban | 3608 | 43 |
| Vainilla | 2687 | 16 |
| Vainilla | F5390-8861 | 79 |
| Vainilla | W96-8861 | 78 |
| Veleta | 2676 | 27 |
| Venus | 2659 | 27 |
| Verde | 2242 | 18 |
| Verde Abeto | 92-2039 | 73 |
| Verde Botella | 502V2-2156C | 77 |
| Verde Claro | 2246 | 18 |
| Verde Claro RAL 6018 | 6675 | 67 |
| Verde Musgo | 502V2-2158C | 77 |
| Verde Musgo | 86-2158 | 70 |
| Verde Musgo | 92-2158 | 72 |
| Verde N | 2248 | 52 |
| Verde RAL 6026 | 6176 | 64 |
| Verde RAL 6026 | 6668 | 67 |
| Verde Tennis | 502V2-8056C | 77 |
| Verde X | 2249 | 52 |
| Vesubio | 2636 | 23 |
| Viena | 2251 | 25 |
| Violeta RAL 4005 | 6302 | 67 |
| Visón | 2250 | 16 |
| Washington | 2805 | 36 |
| White | 622-50537 | 75 |
| Windsor | 2929 | 30 |
| York | 2930 | 24 |
| Zanahoria | 502V2-2172C | 77 |
| Zanahoria | 92-2172 | 72 |
| Zurich | 2255 | 18 |

Green

| | | |
|---|---|--------------------|
| Composición / Composition / Composition | Masacril® Acrílico Tintado en Masa 100% Masacril® Acrylic 100% Solution Dyed Masacril® 100% Acrylique Teint en Masse | |
| Ancho de rollo / Roll width / Largeur du rouleau | 120 cm | |
| Peso por m² / Weight per m² / Poids par m² | 300 gr | |
| Longitud de piezas / Length of rolls / Longueur des pièces | 60 ml | |
| Hilos / Yarns / Fils | Urdimbre / Warp / Chaîne | 30h / cm (Nm 34/2) |
| | Trama / Welf / Trame | 15h / cm (Nm 34/2) |
| Resistencia a la tracción <i>Tensile strength</i> Résistance à la traction | Urdimbre / Warp / Chaîne | 140 daN / 5 cm |
| | Trama / Welf / Trame | 95 daN / 5 cm |
| Columna de agua / Water repellency / Hydrofuge | 360 mm | |
| Acabado / Finish / Finition | Green Pureti | |

Lisos / Listados / Clásicos

Smooth / Fantasy / Classics

Lisse / Au Trait / Classiques

| | | | |
|---|---|--------------------|----------------|
| Composición / Composition / Composition | 100% Acrílico Tintado en Masa 100% Acrylic Mass Dyed 100% Acrylique Teint en Masse | | |
| Ancho de rollo / Roll width / Largeur du rouleau | 120 cm | | |
| Peso por m² / Weight per m² / Poids par m² | 300 gr | | |
| Hilos / Yarns / Fils | Urdimbre / Warp / Chaîne | 30h / cm (Nm 34/2) | |
| | Trama / Welf / Trame | 15h / cm (Nm 34/2) | |
| Resistencia a la tracción <i>Tensile strength</i> Résistance à la traction | Urdimbre <i>Warp</i> Chaîne | 140 daN / 5 cm | 130 daN / 5 cm |
| | Trama <i>Welf</i> Trame | 95 daN / 5 cm | 75 daN / 5 cm |
| Columna de agua / Water repellency / Hydrofuge | | 360 mm | 350 mm |

Tándem

| | | | |
|---|---|----------------------|--|
| Composición / Composition / Composition | Masacril® Acrílico Tintado en Masa 100% Masacril® Acrylic 100% Solution Dyed Masacril® 100% Acrylique Teint en Masse | | |
| Ancho de rollo / Roll width / Largeur du rouleau | 120 cm | | |
| Peso por m² / Weight per m² / Poids par m² | 300 gr | | |
| Longitud de piezas / Length of rolls / Longueur des pièces | 60 ml | | |
| Hilos / Yarns / Fils | Urdimbre / Warp / Chaîne | 30h / cm (Nm 34/2) | |
| | Trama / Welf / Trame | 14,5h / cm (Nm 14/1) | |
| Resistencia a la tracción <i>Tensile strength</i> Résistance à la traction | Urdimbre / Warp / Chaîne | 145 daN / 5 cm | |
| | Trama / Welf / Trame | 90 daN / 5 cm | |
| Columna de agua / Water repellency / Hydrofuge | 360 mm | | |
| Acabado / Finish / Finition | Sauleda Fabric Protector | | |

Estampados

Prints / Impressions

| | | |
|--|---|----------------|
| Composición / Composition / Composition | Poliéster Acrílico Acrylic Polyester Polyester Acrylique | |
| Ancho de rollo / Roll width / Largeur du rouleau | 120 cm | |
| Peso por m² / Weight per m² / Poids par m² | 400 gr | |
| Longitud de piezas / Length of rolls / Longueur des pièces | 60 ml / 100 ml | |
| Resistencia a la tracción Tensile strength Résistance à la traction | Urdimbre / Warp / Chaîne | 200 daN / 5 cm |
| | Trama / Weft / Trame | 150 daN / 5 cm |
| Columna de agua / Water repellency / Hydrofuge | >600 mm | |
| Acabado / Finish / Finition | Sauleda Fabric Protector | |

Solrain

| | | |
|--|---|------------------|
| Composición / Composition / Composition | Masacril® Acrílico Tintado en Masa 100% Masacril® Acrylic 100% Solution Dyed Masacril® 100% Acrylique Teint en Masse | |
| Ancho de rollo / Roll width / Largeur du rouleau | 120 cm | |
| Peso por m² / Weight per m² / Poids par m² | 330 gr | |
| Longitud de piezas / Length of rolls / Longueur des pièces | 50 ml / 60 ml | |
| Hilos / Yarns / Fils | Urdimbre / Warp / Chaîne | 31h/cm (Nm 34/2) |
| | Trama / Weft / Trame | 15h/cm (Nm 34/2) |
| Resistencia a la tracción Tensile strength Résistance à la traction | Urdimbre / Warp / Chaîne | 150 daN / 5 cm |
| | Trama / Weft / Trame | 95 daN / 5 cm |
| Columna de agua / Water repellency / Hydrofuge | 1.000 mm | |
| Acabado / Finish / Finition | Sauleda Fabric Protector | |

Force

| | | |
|--|---|---------------------|
| Composición / Composition / Composition | Masacril® Acrílico Tintado en Masa 100% Masacril® Acrylic 100% Solution Dyed Masacril® 100% Acrylique Teint en Masse | |
| Ancho de rollo / Roll width / Largeur du rouleau | 120 cm | |
| Peso por m² / Weight per m² / Poids par m² | 290 gr | |
| Longitud de piezas / Length of rolls / Longueur des pièces | 60 ml | |
| Hilos / Yarns / Fils | Urdimbre / Warp / Chaîne | 30h / cm (Nm 34/2) |
| | Trama / Weft / Trame | 14h / cm (600 dtex) |
| Resistencia a la tracción Tensile strength Résistance à la traction | Urdimbre / Warp / Chaîne | 140 daN / 5 cm |
| | Trama / Weft / Trame | 120 daN / 5 cm |
| Alargamiento de rotura Elongation at break Rupture d'élongation | Urdimbre / Warp / Chaîne | 30 % |
| | Trama / Weft / Trame | 13 % |
| Columna de agua / Water repellency / Hydrofuge | 320 mm | |
| Acabado / Finish / Finition | Sauleda Fabric Protector | |

Top Fr

| | | |
|--|---|-----------------|
| Composición / Composition / Composition | Poliéster 100% Tintado en Masa <i>Polyester 100% Solution Dyed</i> 100% Polyester Teint en Masse | |
| Ancho de rollo / Roll width / Largeur du rouleau | 153 cm | |
| Peso por m² / Weight per m² / Poids par m² | 310 gr | |
| Resistencia a la tracción <i>Tensile strength</i> Résistance à la traction | Urdimbre / Warp / Chaîne | 1800 daN / 5 cm |
| | Trama / Weft / Trame | 850 daN / 5 cm |
| Clasificación resistencia al fuego <i>Fire classification</i> Indice de résistance au feu | Ignífugo M1 <i>Fireproof M1</i> Ignifugé M1 | |

Monza

| | | |
|---|--|----------------|
| Composición / Composition / Composition | Poliéster / Polyester / Polyester AT 1100 dtex | |
| Ancho de rollo / Roll width / Largeur du rouleau | 300 cm | |
| Peso por m² / Weight per m² / Poids par m² | 580 gr | |
| Grosor de tejido / Fabric thickness / Épaisseur de la toile | 0,48 mm | |
| Longitud de piezas / Length of rolls / Longueur des pièces | 50 ml | |
| Resistencia a la tracción <i>Tensile strength</i> Résistance à la traction | Urdimbre / Warp / Chaîne | 270 daN / 5 cm |
| | Trama / Weft / Trame | 230 daN / 5 cm |
| Resistencia al desgarro <i>Tear resistance</i> Résistance à la déchirure | Urdimbre / Warp / Chaîne | 30 daN |
| | Trama / Weft / Trame | 25 daN |
| Adherencia / Adhesion / Adhérence | 10 daN / 5 cm | |
| Acabado / Finish / Finition | Lacado 1 cara / 1 sided lacquer / 1 face laquée | |

VIP Fr

| | | |
|--|---|----------------|
| Composición / Composition / Composition | Poliéster / Polyester / Polyester AT 1100 dtex | |
| Ancho de rollo / Roll width / Largeur du rouleau | 250 cm | |
| Peso por m² / Weight per m² / Poids par m² | 580 gr | |
| Grosor de tejido / Fabric thickness / Épaisseur de la toile | 0,48 mm | |
| Longitud de piezas / Length of rolls / Longueur des pièces | 56 ml | |
| Resistencia a la tracción <i>Tensile strength</i> Résistance à la traction | Urdimbre / Warp / Chaîne | 270 daN / 5 cm |
| | Trama / Weft / Trame | 230 daN / 5 cm |
| Resistencia al desgarro <i>Tear resistance</i> Résistance à la déchirure | Urdimbre / Warp / Chaîne | 30 daN |
| | Trama / Weft / Trame | 23 daN |
| Adherencia / Adhesion / Adhérence | 10 daN / 5 cm | |
| Acabado / Finish / Finition | Lacado 2 caras / 2 sided lacquered / 2 faces laquées | |
| Clasificación resistencia al fuego <i>Fire classification</i> Indice de résistance au feu | Ignífugo FR M2 <i>Fireproof FR M2</i> Ignifugé FR M2 | |

Soltis Horizon 86

| | | | |
|--|---------------------------------|---|---------------|
| Ancho de rollo / Roll width / Largeur du rouleau | | ■ 177 cm ● 267 cm | |
| Peso por m² / Weight per m² / Poids par m² | | 380 gr | EN ISO 2286-2 |
| Grosor de tejido / Fabric thickness / Épaisseur de la toile | | 0,45 mm | |
| Longitud de piezas <i>Length of rolls</i> Longueur des pièces | | 50 ml (177 cm) 40 ml (267 cm) | |
| Resistencia a la tracción <i>Tensile strength</i> Résistance à la traction | Urdimbre / Warp / Chaîne | 230 daN / 5 cm | EN ISO 1421 |
| | Trama / Weft / Trame | 160 daN / 5 cm | |
| Resistencia al desgarro <i>Tear resistance</i> Résistance à la déchirure | Urdimbre / Warp / Chaîne | 45 daN | DIN 53.363 |
| | Trama / Weft / Trame | 20 daN | |
| Clasificación resistencia al fuego <i>Fire classification</i> Indice de résistance au feu | | B1/DIN 4102-1 — BS 7837 — BS 5867 — Schwerbrennbar-Q1-Tr1/ONORM A 3800-1 Class 1/UNI 9177-87 — M1/UNE 23.727-90 — VKF 5.2/SN 198898 — 1530.3/AS/NZS G1/GOST 30244-94 — Method 1/NFPA 701 — CSFM T19 — Class A/ASTM E84 | |
| Coefficiente de apertura <i>Opening coefficient</i> Coefficient d'ouverture | | 14% | |
| Euroclase / Euroclass / Euroclasse | | B-s2,d0 | EN 13501-1 |
| Sistemas de gestión de la calidad <i>Quality management systems</i> Systèmes de gestion de la qualité | | | ISO 9001 |

Soltis Harmony 88

| | | | |
|--|--|--|---------------|
| Ancho de rollo / Roll width / Largeur du rouleau | | ■ 177 cm ● 267 cm | |
| Peso por m² / Weight per m² / Poids par m² | | 360 gr | EN ISO 2286-2 |
| Grosor de tejido / Fabric thickness / Épaisseur de la toile | | 0,45 mm | |
| Longitud de piezas <i>Length of rolls</i> Longueur des pièces | | 50 ml (177 cm) 40 ml (267 cm) | |
| Resistencia a la tracción <i>Tensile strength</i> Résistance à la traction | Urdimbre <i>Warp</i> Chaîne | 140 daN / 5 cm | EN ISO 1421 |
| | Trama <i>Weft</i> Trame | 145 daN / 5 cm | |
| Resistencia al desgarro <i>Tear resistance</i> Résistance à la déchirure | Urdimbre <i>Warp</i> Chaîne | 14 daN | DIN 53.363 |
| | Trama <i>Weft</i> Trame | 14 daN | |
| Clasificación resistencia al fuego <i>Fire classification</i> Indice de résistance au feu | | M1/ NFP92-507 — METHOD 1 AND 2/ NFPA 701 — CSFMT19 — CLASS A/ASTM E84 — CAN ULCS109 CLASS 1/ EN 13773 — M-1/ UNE 23727-90 — BS 7837 — BS 5867 VKF 5.3/ SN 198898 — SCHWERBRENNBAR Q1-Tr1/ ONORM A 3800-1 — B1/ DIN 4102-1 1530.3/ AS/ NZS — GROUP 1/AS NZS 3837 — G1/GOST 30244-94 — CLASS 1/ UNI 9177-87 | |
| Coefficiente de apertura <i>Opening coefficient</i> Coefficient d'ouverture | | 8% | |
| Euroclase / Euroclass / Euroclasse | | B-s2,d0 | EN 13501-1 |
| Sistemas de gestión de la calidad <i>Quality management systems</i> Systèmes de gestion de la qualité | | | ISO 9001 |

Soltis Perform 92

| | | | |
|--|--|----------------|---------------|
| Ancho de rollo / Roll width / Largeur du rouleau | ■ 177 cm ● 267 cm | | |
| Peso por m² / Weight per m² / Poids par m² | 420 gr | | EN ISO 2286-2 |
| Grosor de tejido <i>Fabric thickness</i> Épaisseur de la toile | 0,45 mm | | |
| Longitud de piezas <i>Length of rolls</i> Longueur des pièces | 50 ml (177 cm) 40 ml (267 cm) | | |
| Resistencia a la tracción <i>Tensile strength</i> Résistance à la traction | Urdimbre / Warp / Chaîne | 310 daN / 5 cm | EN ISO 1421 |
| | Trama / Weft / Trame | 210 daN / 5 cm | |
| Resistencia al desgarro <i>Tear resistance</i> Résistance à la déchirure | Urdimbre / Warp / Chaîne | 45 daN | DIN 53.363 |
| | Trama / Weft / Trame | 20 daN | |
| Clasificación resistencia al fuego <i>Fire classification</i> Indice de résistance au feu | B1/DIN 4102-1 — BS 7837 — BS 5867 — Schwerbrennbar-Q1-Tr1/ONORM A 3800-1 Class 1/UNI 9177-87 — M1/UNE 23.727-90 — VKF 5.2/SN 198898 — 1530.3/AS/NZS G1/GOST 30244-94 — Method 1/NFPA 701 — CSFM T19 — Class A/ASTM E84 | | |
| Coefficiente de apertura <i>Opening coefficient</i> Coefficient d'ouverture | 4% | | |
| Euroclase / Euroclass / Euroclasse | B-s2,d0 | | EN 13501-1 |
| Sistemas de gestión de la calidad <i>Quality management systems</i> Systèmes de gestion de la qualité | | | ISO 9001 |

Soltis Lounge 96

| | | | |
|--|--|----------------|---------------|
| Ancho de rollo / Roll width / Largeur du rouleau | 267 cm | | |
| Peso por m² / Weight per m² / Poids par m² | 400 gr | | EN ISO 2286-2 |
| Grosor de tejido <i>Fabric thickness</i> Épaisseur de la toile | 0,45 mm | | |
| Longitud de piezas / Length of rolls / Longueur des pièces | 40 ml | | |
| Resistencia a la tracción <i>Tensile strength</i> Résistance à la traction | Urdimbre / Warp / Chaîne | 220 daN / 5 cm | EN ISO 1421 |
| | Trama / Weft / Trame | 220 daN / 5 cm | |
| Resistencia al desgarro <i>Tear resistance</i> Résistance à la déchirure | Urdimbre / Warp / Chaîne | 30 daN | DIN 53.363 |
| | Trama / Weft / Trame | 25 daN | |
| Clasificación resistencia al fuego <i>Fire classification</i> Indice de résistance au feu | Ignífugo M2 <i>Fireproof M2</i> Ignifugé M2 | | |
| Coefficiente de apertura <i>Opening coefficient</i> Coefficient d'ouverture | 4% | | |
| Sistemas de gestión de la calidad <i>Quality management systems</i> Systèmes de gestion de la qualité | | | ISO 9001 |

Soltis Opaque B92 y 622

| | | B92 | 622 | Norma B92 | Norma 622 |
|--|---------------------------------|---|----------------|---------------|---------------|
| Ancho de rollo / Roll width / Largeur du rouleau | | 170 cm | 267 cm | | |
| Peso por m² / Weight per m² / Poids par m² | | 650 gr | 750 gr | EN ISO 2286-2 | EN ISO 2286-2 |
| Grosor de tejido / Fabric thickness / Épaisseur de la toile | | 0,60 mm | 0,63 mm | | |
| Longitud de piezas / Length of rolls / Longueur des pièces | | 40 ml | 50 ml | | |
| Resistencia a la tracción <i>Tensile strength</i> Résistance à la traction | Urdimbre / Warp / Chaîne | 330 daN / 5 cm | 230 daN / 5 cm | EN ISO 1421 | EN ISO 1421 |
| | Trama / Weft / Trame | 220 daN / 5 cm | 220 daN / 5 cm | | |
| Resistencia al desgarro <i>Tear resistance</i> Résistance à la déchirure | Urdimbre / Warp / Chaîne | 45 daN | 20 daN | DIN 53.363 | DIN 53.363 |
| | Trama / Weft / Trame | 25 daN | 20 daN | | |
| Clasificación resistencia al fuego (B92) <i>Fire classification (B92)</i> Indice de résistance au feu (B92) | | B1/DIN 4102-1 Schwebrennbar- Q1-Tr1/ONORM A 3800-1 Class 2/UNI 9177-87 VKF 5.2/SN 198898 BS 5867 Method 1 and 2/ NFPA 701 ClassA/ASTME84 | | | |
| Clasificación resistencia al fuego (622) <i>Fire classification (622)</i> Indice de résistance au feu (622) | | M2/NFP 92-507 — B1/DIN 4102-1 — M2/UNE 23.727-90 BS 7837 — 1530. 2 & 3 /AS NZS | | | |
| Euroclase (B92) / Euroclass (B92) / Euroclasse (B92) | | B-s2,d0 | | | |
| Sistemas de gestión de la calidad <i>Quality management systems</i> Systèmes de gestion de la qualité | | ISO 9001 | | | |

Soltis Proof 502

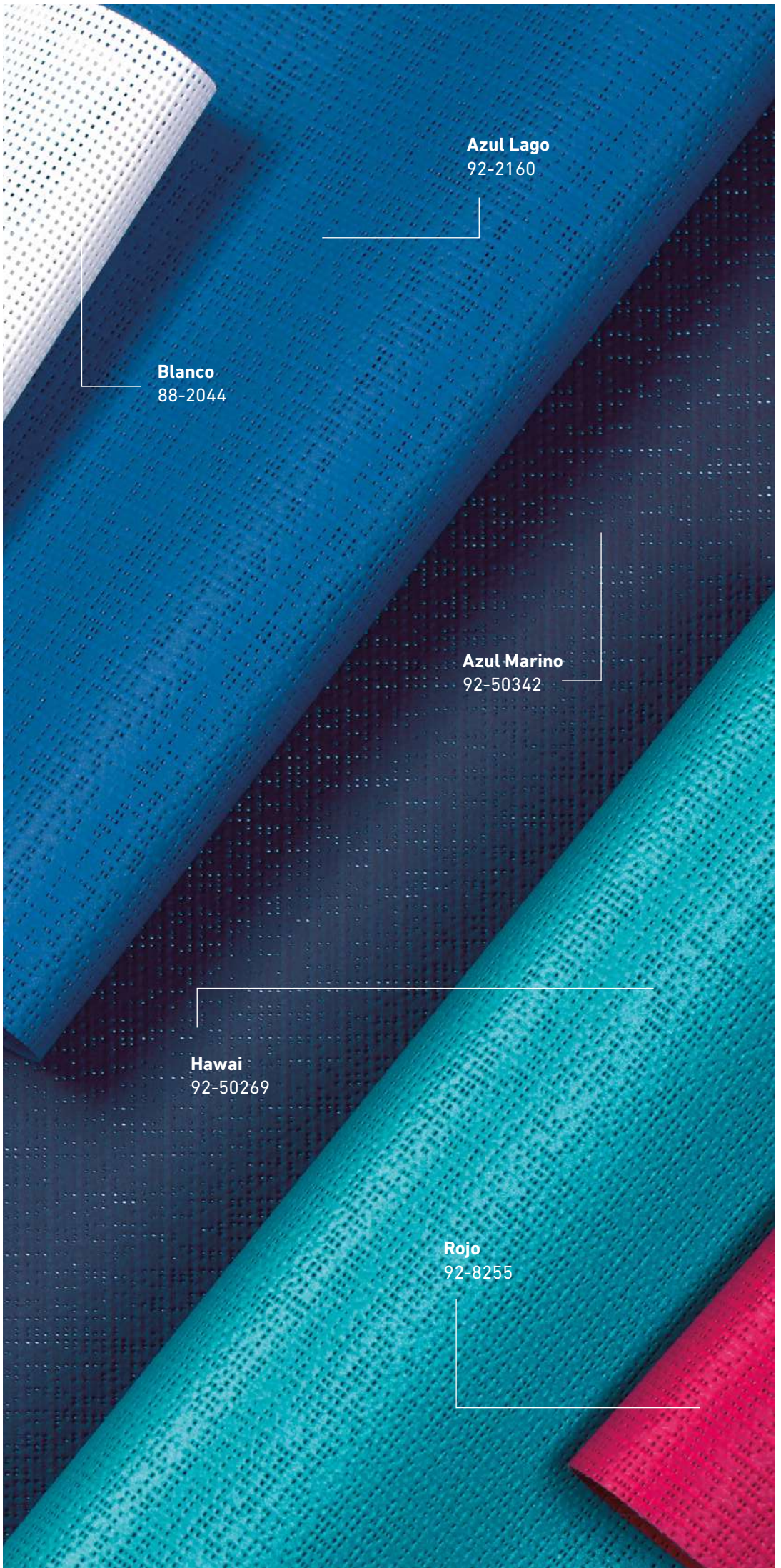
| | | | | |
|--|--|--|-------------|---------------|
| Ancho de rollo / Roll width / Largeur du rouleau | | 180 cm | | |
| Peso por m² / Weight per m² / Poids par m² | | 570 gr | | EN ISO 2286-2 |
| Grosor de tejido / Fabric thickness / Épaisseur de la toile | | 0,45 mm | | |
| Longitud de piezas / Length of rolls / Longueur des pièces | | 40 ml | | |
| Resistencia a la tracción <i>Tensile strength</i> Résistance à la traction | Urdimbre <i>Warp</i> Chaîne | 200 daN / 5 cm | EN ISO 1421 | |
| | Trama <i>Weft</i> Trame | 200 daN / 5 cm | | |
| Resistencia al desgarro <i>Tear resistance</i> Résistance à la déchirure | Urdimbre <i>Warp</i> Chaîne | 20 daN | DIN 53.363 | |
| | Trama <i>Weft</i> Trame | 20 daN | | |
| Adherencia / Adherence / Adhésion | | 7 / 7 daN / 5 cm | | EN ISO 2411 |
| Acabado / Finish / Finition | | Barniz dos caras PVDF <i>PVDF two-sided varnish</i> Vernis double face PVDF | | |
| Clasificación resistencia al fuego <i>Fire classification</i> Indice de résistance au feu | | M2/NFP 92-507 — B1/DIN 4102-1 — BS 7837 — 1530.2 et 3/AS/NZS M2/UNE 23.7 27-90 — VKF 5.3/SN 198898 — Schwebrennbar Q1-Tr1/ONORM A 3800 Group 1/AS NZS 3837 — CLASS 2/UNI 9177-87 — METHOD 1 & 2/ NFPA 701 CSFM T19 — CLASS A/ASTM E84 — G1/GOST 30244-94 — CAN/ULC-S109 — CPAI 84 | | |
| Euroclase / Euroclass / Euroclasse | | B-s2,d0 | | |
| Sistemas de gestión de la calidad <i>Quality management systems</i> Systèmes de gestion de la qualité | | ISO 9001 | | |

Soltis Proof W96

| | | | |
|--|--|----------------|---------------|
| Ancho de rollo / Roll width / Largeur du rouleau | 267 cm | | |
| Peso por m² / Weight per m² / Poids par m² | 620 gr | | EN ISO 2286-2 |
| Grosor de tejido / Fabric thickness / Épaisseur de la toile | 0,56 mm | | |
| Longitud de piezas / Length of rolls / Longueur des pièces | 35 ml | | |
| Resistencia a la tracción <i>Tensile strength</i> Résistance à la traction | Urdimbre <i>Warp</i> Chaîne | 220 daN / 5 cm | EN ISO 1421 |
| | Trama <i>Weft</i> Trame | 220 daN / 5 cm | |
| Resistencia al desgarro <i>Tear resistance</i> Résistance à la déchirure | Urdimbre <i>Warp</i> Chaîne | 25 daN | DIN 53.363 |
| | Trama <i>Weft</i> Trame | 20 daN | |
| Clasificación resistencia al fuego <i>Fire classification</i> Indice de résistance au feu | Ignífugo M2 <i>Fireproof M2</i> Ignifugé M2 | | |
| Sistemas de gestión de la calidad <i>Quality management systems</i> Systèmes de gestion de la qualité | ISO 9001 | | |

Soltis Elite

| | | | |
|--|--|----------------|-------------------|
| Ancho de rollo / Roll width / Largeur du rouleau | 120 cm | | |
| Peso por m² / Weight per m² / Poids par m² | 390 gr | | EN ISO 2286-2 |
| Grosor de tejido / Fabric thickness / Épaisseur de la toile | 0,45 mm | | ISO 5084 |
| Longitud de piezas / Length of rolls / Longueur des pièces | 50 ml | | |
| Resistencia a la tracción <i>Tensile strength</i> Résistance à la traction | Urdimbre <i>Warp</i> Chaîne | 130 daN / 5 cm | EN ISO 1421 |
| | Trama <i>Weft</i> Trame | 130 daN / 5 cm | |
| Resistencia al desgarro <i>Tear resistance</i> Résistance à la déchirure | Urdimbre <i>Warp</i> Chaîne | 15 daN | EN 1875-3 |
| | Trama <i>Weft</i> Trame | 15 daN | |
| Impermeabilidad al agua <i>Water impermeability</i> Imperméabilité à l'eau | >4000 mm | | Schmerber ISO 811 |
| Clasificación resistencia al fuego <i>Fire classification</i> Indice de résistance au feu | Ignífugo Clase 1 <i>Fireproof Class 1</i> Ignifugé Classe 1 | | EN 13773 |
| Sistemas de gestión de la calidad <i>Quality management systems</i> Systèmes de gestion de la qualité | ISO 9001 | | |
| Tipo de confección <i>Preparation mode</i> Mode de préparation | Mediante costura <i>By sewing</i> En cousant | | |



Azul Lago
92-2160

Blanco
88-2044

Azul Marino
92-50342

Hawai
92-50269

Rojo
92-8255

saxun[®]

Giménez Ganga, S.L.U.

Polígono Industrial El Castillo
C/ Roma, 4
03630 Sax (Alicante) España

t. (+34) 965 474 050 | 965 474 205

f. (+34) 965 474 563

info@saxun.com

saxun.com

